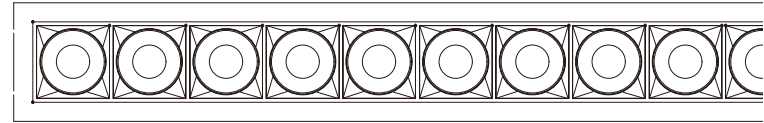
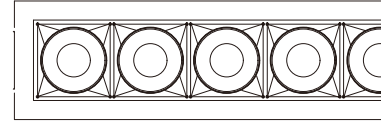
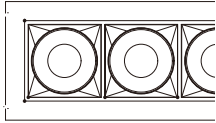


grace

Linear
Installation Manual



Safety Instruction:

1. Turn off power before installation or before doing any maintenance work.
 2. Do not install any luminaire near a heat source.
 3. For Outdoor and Indoor use.
 4. Do not exceed the nominal supply voltage or amperage ratings.
 5. All wiring and installation of this luminaire must adhere to local and national wiring rules eg AS/NZS 3000:2007 Amendment 2:2012
- Electrical Installation
6. Take care not to pull any electrical wires during unpacking as this may damage the connection.
 7. Lay out all the components on a smooth surface and make sure there are no components missing before assembling.
 8. To avoid injury or damage to the fitting, please ensure that power leads and screws are secure before connecting the power.
 9. Please keep instructions for future reference.

Installation Instruction

Do not install through or directly into joist, beam, rafter or ceiling batten.

Side Clearance from heatsink to building element (e.g. timber, joist or batten) - SCB	25 mm
Height Clearance from heatsink to building element (e.g. timber, joist or batten) - HCB	25 mm
Minimum insulation clearance to building element - MIC	25 mm

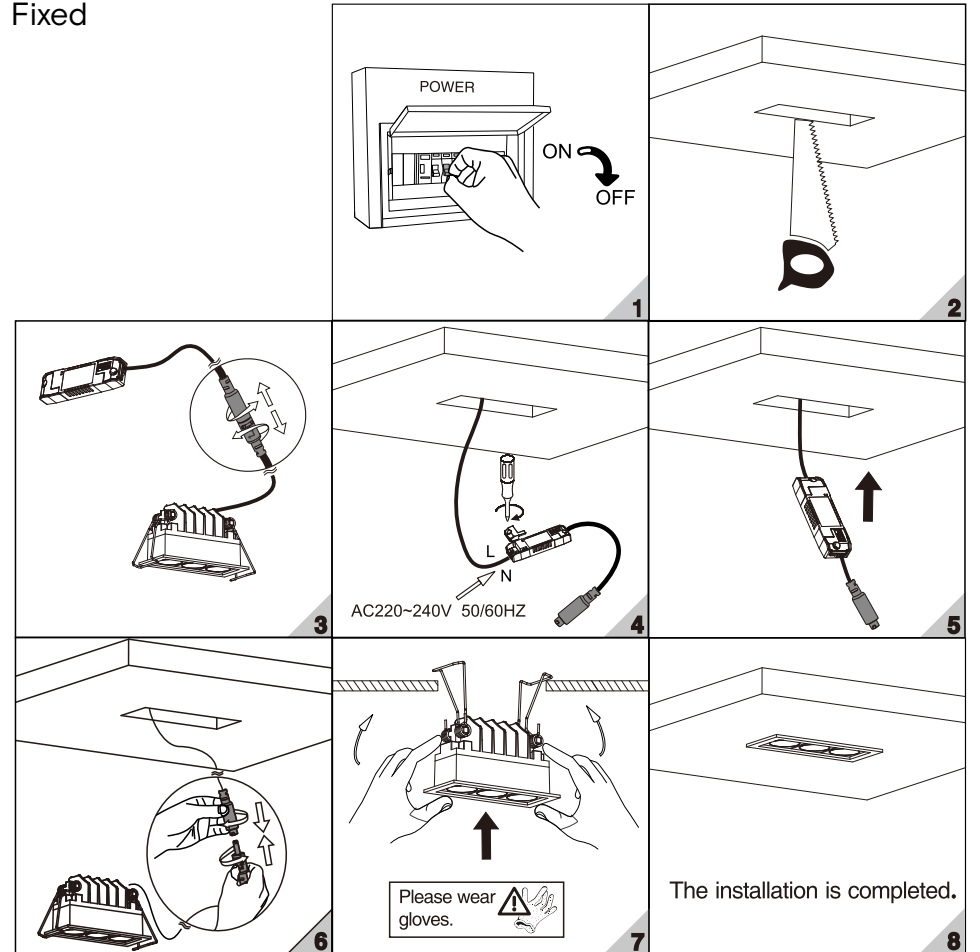


Recessed luminaires and their associated equipment may pose a risk of fire or damage to property if not installed and maintained correctly. Novii recommends a clearance of 25mm to building elements for optimum lifespan.

This data sheet contains information necessary to ensure compliance with the New Zealand Electrical Code of Practice for Installation and Maintenance of Recessed Luminaires and Associated Equipment AS/NZS 60598.2.2:2001

Installation Procedure

Fixed



Model SKU	Dimensions (mm)	Cutout (mm)	IP rating
G2-L1F6	L103xW43xH39	L95xW35	20
G2-L2F12	L193xW43xH39	L185xW35	20
G2-L3F24	L373xW43xH39	L365xW35	20