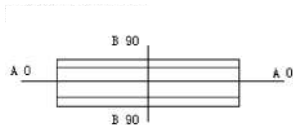
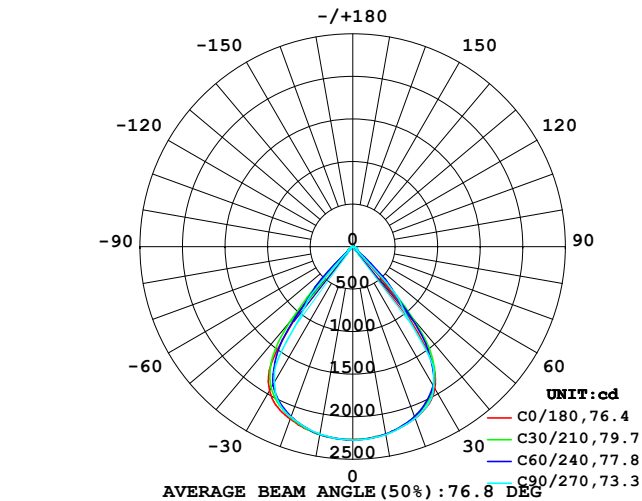


LUMINAIRE PHOTOMETRIC TEST REPORT

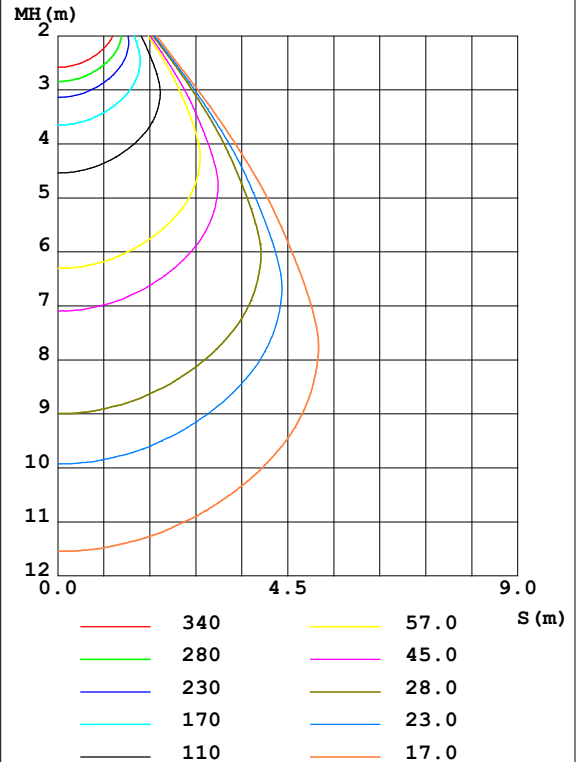
| | | |
|--|-------|------------------|
| Test:U:221.50V I:0.126A P:26.30W PF:0.941 Freq:50.00Hz Lamp Flux:3128.75x1 lm | | |
| NAME: G2-MP25-WW9380DA | TYPE: | WEIGHT: |
| SPEC.: | DIM.: | SERIAL No.: |
| MFR.: | SUR.: | Shielding Angle: |

| DATA OF LAMP | | PHOTOMETRIC DATA Eff: 118.96 lm/W | | | |
|------------------|---------|-----------------------------------|--------|--------------------|----------|
| MODEL | | I _{max} (cd) | 2274 | S/MH (C0/180) | 1.12 |
| NOMINAL POWER(W) | | LOR(%) | 100.0 | S/MH (C90/270) | 1.05 |
| RATED VOLTAGE(V) | 220 | TOTAL FLUX (lm) | 3128.7 | η UP,DN (C0-180) | 0.0,51.2 |
| NOMINAL FLUX(lm) | 3128.75 | CIE CLASS | DIRECT | η UP,DN (C180-360) | 0.0,48.8 |
| LAMPS INSIDE | 1 | η up (%) | 0.0 | CIBSE SHR NOM | 0.75 |
| TEST VOLTAGE (V) | 221.2 | η down (%) | 100.0 | CIBSE SHR MAX | 0.90 |

LUMINOUS INTENSITY DISTRIBUTION DIAGRAM



C0 PLANE ISOLUX DIAGRAM (UNIT:lx)



C Range: 0 - 360DEG
C Interval: 15.0DEG
Test Speed: HIGH
Temperature:25DEG
Operators:SENPU
Test Date:2024-06-14

γ Range: 0 - 100DEG
γ Interval: 1.0DEG
Test System:EVERFINE GO-2000B_V1 SYSTEM V2.00.444
Humidity:61%
Test Distance:8.000m [K=1.0000]
Remarks:

ZONAL FLUX DIAGRAM

ZONAL FLUX DIAGRAM:

| γ | C0 | C45 | C90 | C135 | C180 | C225 | C270 | C315 | γ | Φ zone | Φ total | %lum,lamp |
|----------|-----------------------|--------|--------|--------|--------|--------|--------|--------|----------|-------------|--------------|-----------|
| 10 | 2237 | 2239 | 2241 | 2245 | 2241 | 2240 | 2237 | 2235 | 0- 10 | 215.3 | 215.3 | 6.88,6.88 |
| 20 | 2146 | 2124 | 2144 | 2141 | 2155 | 2118 | 2132 | 2100 | 10- 20 | 620.1 | 835.4 | 26.7,26.7 |
| 30 | 1929 | 1888 | 1898 | 1915 | 1955 | 1877 | 1843 | 1838 | 20- 30 | 938.7 | 1774 | 56.7,56.7 |
| 40 | 811.3 | 1206 | 883.3 | 1279 | 913.2 | 1148 | 828.0 | 1043 | 30- 40 | 948.4 | 2723 | 87,87 |
| 50 | 62.51 | 111.7 | 71.82 | 186.2 | 63.50 | 88.73 | 65.34 | 78.90 | 40- 50 | 299.9 | 3022 | 96.6,96.6 |
| 60 | 43.62 | 49.55 | 47.23 | 50.79 | 43.65 | 45.99 | 43.22 | 44.64 | 50- 60 | 51.78 | 3074 | 98.3,98.3 |
| 70 | 23.81 | 25.22 | 26.78 | 26.75 | 24.46 | 22.08 | 22.27 | 20.70 | 60- 70 | 35.40 | 3110 | 99.4,99.4 |
| 80 | 6.573 | 7.776 | 8.114 | 8.429 | 6.711 | 5.909 | 5.566 | 5.357 | 70- 80 | 15.33 | 3125 | 99.9,99.9 |
| 90 | 0.4970 | 1.271 | 0.8629 | 1.511 | 0.1246 | 0.1271 | 0.0083 | 0.1095 | 80- 90 | 3.513 | 3128 | 100,100 |
| 100 | 0.6111 | 0.5860 | 0.5274 | 0.5357 | 0.0335 | 0.0335 | 0 | 0.0419 | 90-100 | 0.3448 | 3129 | 100,100 |
| 110 | 0 | 0 | 0 | 0 | 0 | 0 | 0 | 0 | 100-110 | 0.0156 | 3129 | 100,100 |
| 120 | 0 | 0 | 0 | 0 | 0 | 0 | 0 | 0 | 110-120 | 0 | 3129 | 100,100 |
| 130 | 0 | 0 | 0 | 0 | 0 | 0 | 0 | 0 | 120-130 | 0 | 3129 | 100,100 |
| 140 | 0 | 0 | 0 | 0 | 0 | 0 | 0 | 0 | 130-140 | 0 | 3129 | 100,100 |
| 150 | 0 | 0 | 0 | 0 | 0 | 0 | 0 | 0 | 140-150 | 0 | 3129 | 100,100 |
| 160 | 0 | 0 | 0 | 0 | 0 | 0 | 0 | 0 | 150-160 | 0 | 3129 | 100,100 |
| 170 | 0 | 0 | 0 | 0 | 0 | 0 | 0 | 0 | 160-170 | 0 | 3129 | 100,100 |
| 180 | 0 | 0 | 0 | 0 | 0 | 0 | 0 | 0 | 170-180 | 0 | 3129 | 100,100 |
| DEG | LUMINOUS INTENSITY:cd | | | | | | | | | UNIT:lm | | |

Conical surface Flux(90deg): 2959.6 lm

%lum = 94.6%

%lamp = 94.6%

Conical surface Flux(120deg): 3074.1 lm

%lum = 98.3%

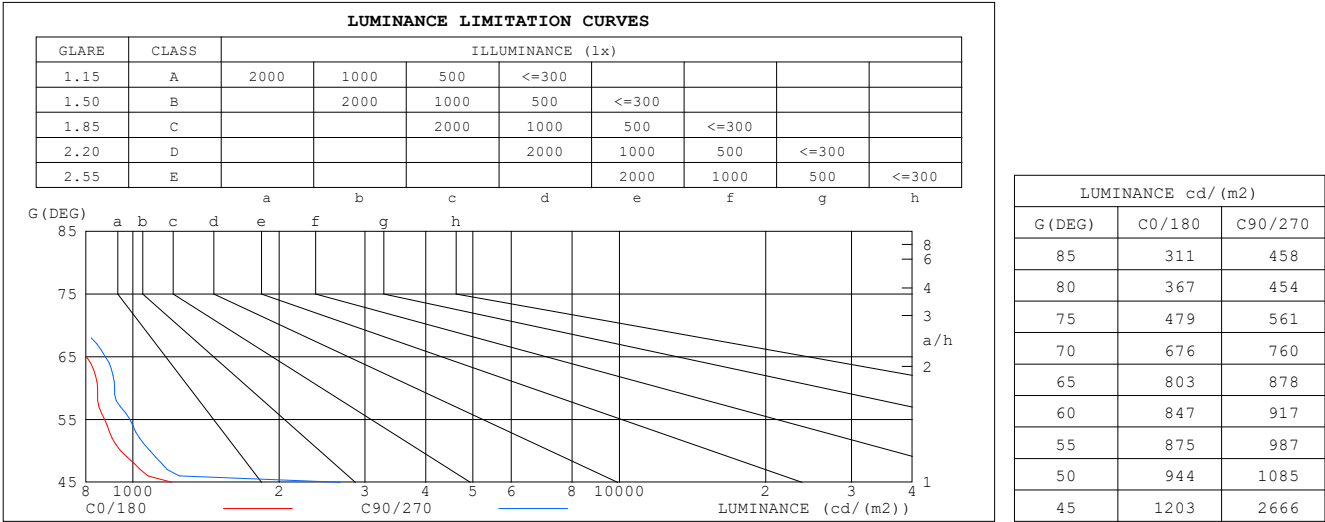
%lamp = 98.3%

C Range: 0 - 360DEG
C Interval: 15.0DEG
Test Speed: HIGH
Temperature:25DEG
Operators:SENPU
Test Date:2024-06-14

γ Range: 0 - 100DEG
 γ Interval: 1.0DEG
Test System:EVERFINE GO-2000B_V1 SYSTEM V2.00.444
Humidity:61%
Test Distance:8.000m [K=1.0000]
Remarks:

LUMINANCE LIMITATION CURVES

| | | |
|--|-------|------------------|
| Test:U:221.50V I:0.126A P:26.30W PF:0.941 Freq:50.00Hz Lamp Flux:3128.75x1 lm | | |
| NAME: G2-MP25-WW9380DA | TYPE: | WEIGHT: |
| SPEC.: | DIM.: | SERIAL No.: |
| MFR.: | SUR.: | Shielding Angle: |



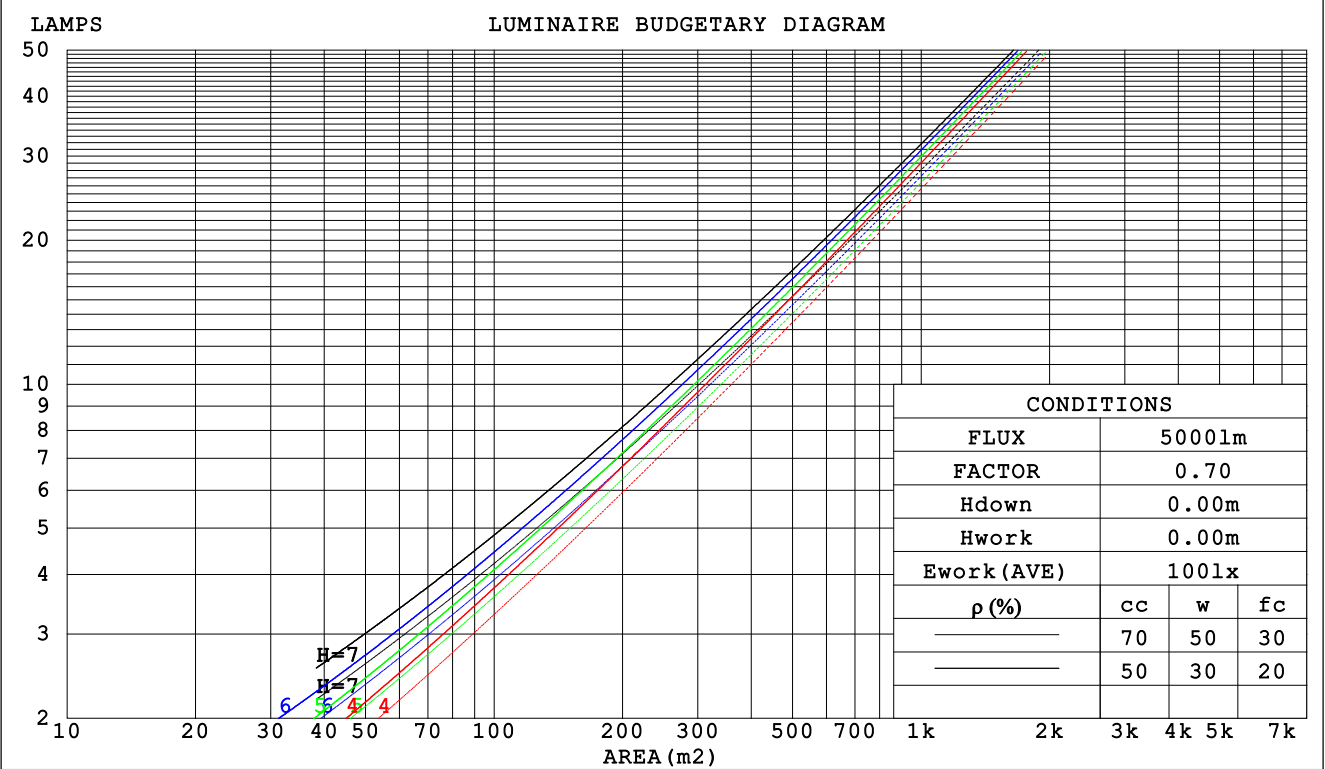
C Range: 0 - 360DEG
C Interval: 15.0DEG
Test Speed: HIGH
Temperature:25DEG
Operators:SENPU
Test Date:2024-06-14

γ Range: 0 - 100DEG
γ Interval: 1.0DEG
Test System:EVERFINE GO-2000B_V1 SYSTEM V2.00.444
Humidity:61%
Test Distance:8.000m [K=1.0000]
Remarks:

CU AND LUMINAIRE BUDGETARY ESTIMATE DIAGRAM

| | | |
|--|-------|------------------|
| Test:U:221.50V I:0.126A P:26.30W PF:0.941 Freq:50.00Hz | | |
| Lamp Flux:3128.75x1 lm | | |
| NAME: G2-MP25-WW9380DA | TYPE: | WEIGHT: |
| SPEC.: | DIM.: | SERIAL No.: |
| MFR.: | SUR.: | Shielding Angle: |

| pcc | 80% | | | 70% | | | 50% | | | 30% | | | 10% | | | 0 |
|------|-----------------------|------|------|------|------|------|---------------------------------|------|------|------|------|------|------|------|------|-----|
| pw | 50% | 30% | 10% | 50% | 30% | 10% | 50% | 30% | 10% | 50% | 30% | 10% | 50% | 30% | 10% | 0 |
| pfc | 20% | | | 20% | | | 20% | | | 20% | | | 20% | | | 0 |
| RCR | RCR:Room Cavity Ratio | | | | | | Coefficients of Utilization(CU) | | | | | | | | | |
| 0.0 | 1.19 | 1.19 | 1.19 | 1.16 | 1.16 | 1.16 | 1.11 | 1.11 | 1.11 | 1.06 | 1.06 | 1.06 | 1.02 | 1.02 | 1.02 | .00 |
| 1.0 | 1.10 | 1.07 | 1.05 | 1.08 | 1.05 | 1.03 | 1.04 | 1.02 | .00 | .00 | .98 | .97 | .96 | .95 | .94 | .92 |
| 2.0 | 1.01 | .97 | .93 | .99 | .95 | .92 | .96 | .93 | .90 | .93 | .90 | .88 | .90 | .88 | .86 | .84 |
| 3.0 | .93 | .88 | .83 | .92 | .87 | .83 | .89 | .85 | .81 | .87 | .83 | .80 | .84 | .81 | .79 | .77 |
| 4.0 | .86 | .80 | .75 | .85 | .79 | .75 | .83 | .78 | .74 | .81 | .76 | .73 | .79 | .75 | .72 | .71 |
| 5.0 | .80 | .73 | .68 | .79 | .73 | .68 | .77 | .72 | .68 | .75 | .71 | .67 | .74 | .70 | .66 | .65 |
| 6.0 | .74 | .67 | .63 | .73 | .67 | .62 | .72 | .66 | .62 | .70 | .65 | .61 | .69 | .64 | .61 | .59 |
| 7.0 | .69 | .62 | .57 | .68 | .62 | .57 | .67 | .61 | .57 | .65 | .60 | .57 | .64 | .60 | .56 | .55 |
| 8.0 | .64 | .57 | .53 | .63 | .57 | .53 | .62 | .57 | .53 | .61 | .56 | .52 | .60 | .56 | .52 | .51 |
| 9.0 | .60 | .53 | .49 | .59 | .53 | .49 | .58 | .53 | .49 | .57 | .52 | .48 | .56 | .52 | .48 | .47 |
| 10.0 | .56 | .50 | .45 | .56 | .49 | .45 | .55 | .49 | .45 | .54 | .49 | .45 | .53 | .48 | .45 | .43 |



C Range: 0 - 360DEG
C Interval: 15.0DEG
Test Speed: HIGH
Temperature:25DEG
Operators:SENPU
Test Date:2024-06-14

γ Range: 0 - 100DEG
γ Interval: 1.0DEG
Test System:EVERFINE GO-2000B_V1 SYSTEM V2.00.444
Humidity:61%
Test Distance:8.000m [K=1.0000]
Remarks:

WEC AND CCEC

| | | |
|--|-------|------------------|
| Test:U:221.50V I:0.126A P:26.30W PF:0.941 Freq:50.00Hz Lamp Flux:3128.75x1 lm | | |
| NAME: G2-MP25-WW9380DA | TYPE: | WEIGHT: |
| SPEC.: | DIM.: | SERIAL No.: |
| MFR.: | SUR.: | Shielding Angle: |

| pcc | 80% | | | 70% | | | 50% | | | 30% | | | 10% | | | 0 | |
|------|-----------------------|------|------|------|------|------|----------------------------------|------|------|------|------|------|------|------|------|---|--|
| pw | 50% | 30% | 10% | 50% | 30% | 10% | 50% | 30% | 10% | 50% | 30% | 10% | 50% | 30% | 10% | 0 | |
| pfc | 20% | | | 20% | | | 20% | | | 20% | | | 20% | | | 0 | |
| RCR | RCR:Room Cavity Ratio | | | | | | Wall Exitance Coefficients (WEC) | | | | | | | | | | |
| 0.0 | | | | | | | | | | | | | | | | | |
| 1.0 | .196 | .112 | .035 | .189 | .108 | .034 | .177 | .101 | .032 | .165 | .095 | .031 | .154 | .089 | .029 | | |
| 2.0 | .189 | .104 | .032 | .184 | .101 | .031 | .173 | .096 | .030 | .163 | .091 | .029 | .154 | .087 | .027 | | |
| 3.0 | .181 | .096 | .029 | .176 | .094 | .028 | .167 | .090 | .027 | .158 | .087 | .027 | .150 | .083 | .026 | | |
| 4.0 | .173 | .090 | .026 | .169 | .088 | .026 | .160 | .085 | .025 | .153 | .082 | .025 | .146 | .079 | .024 | | |
| 5.0 | .165 | .084 | .024 | .161 | .083 | .024 | .154 | .080 | .024 | .147 | .078 | .023 | .141 | .075 | .023 | | |
| 6.0 | .157 | .079 | .023 | .154 | .078 | .022 | .148 | .076 | .022 | .142 | .074 | .022 | .136 | .072 | .021 | | |
| 7.0 | .150 | .074 | .021 | .147 | .073 | .021 | .142 | .072 | .021 | .136 | .070 | .020 | .131 | .068 | .020 | | |
| 8.0 | .144 | .070 | .020 | .141 | .069 | .020 | .136 | .068 | .019 | .131 | .066 | .019 | .127 | .065 | .019 | | |
| 9.0 | .137 | .066 | .019 | .135 | .066 | .018 | .130 | .065 | .018 | .126 | .063 | .018 | .122 | .062 | .018 | | |
| 10.0 | .132 | .063 | .018 | .129 | .063 | .017 | .125 | .061 | .017 | .121 | .060 | .017 | .118 | .059 | .017 | | |

| pcc | 80% | | | 70% | | | 50% | | | 30% | | | 10% | | | 0 | |
|------|-----------------------|------|------|------|------|------|--|------|------|------|------|------|------|------|------|---|--|
| pw | 50% | 30% | 10% | 50% | 30% | 10% | 50% | 30% | 10% | 50% | 30% | 10% | 50% | 30% | 10% | 0 | |
| pfc | 20% | | | 20% | | | 20% | | | 20% | | | 20% | | | 0 | |
| RCR | RCR:Room Cavity Ratio | | | | | | Ceiling Cavity Exitance Coefficients(CCEC) | | | | | | | | | | |
| 0.0 | .191 | .191 | .191 | .163 | .163 | .163 | .111 | .111 | .111 | .064 | .064 | .064 | .020 | .020 | .020 | | |
| 1.0 | .173 | .157 | .143 | .148 | .135 | .123 | .101 | .093 | .085 | .058 | .054 | .050 | .019 | .017 | .016 | | |
| 2.0 | .159 | .132 | .110 | .136 | .114 | .096 | .093 | .079 | .067 | .054 | .046 | .039 | .017 | .015 | .013 | | |
| 3.0 | .147 | .114 | .087 | .126 | .098 | .075 | .087 | .068 | .053 | .050 | .040 | .031 | .016 | .013 | .010 | | |
| 4.0 | .138 | .099 | .070 | .119 | .086 | .061 | .082 | .060 | .043 | .047 | .035 | .025 | .015 | .011 | .008 | | |
| 5.0 | .130 | .088 | .057 | .112 | .076 | .050 | .077 | .053 | .035 | .045 | .031 | .021 | .014 | .010 | .007 | | |
| 6.0 | .123 | .079 | .047 | .106 | .068 | .041 | .073 | .048 | .029 | .042 | .028 | .017 | .014 | .009 | .006 | | |
| 7.0 | .117 | .072 | .040 | .101 | .062 | .035 | .070 | .044 | .025 | .040 | .026 | .015 | .013 | .008 | .005 | | |
| 8.0 | .112 | .066 | .034 | .096 | .057 | .030 | .067 | .040 | .021 | .039 | .024 | .013 | .013 | .008 | .004 | | |
| 9.0 | .107 | .061 | .030 | .092 | .053 | .026 | .064 | .037 | .018 | .037 | .022 | .011 | .012 | .007 | .004 | | |
| 10.0 | .102 | .056 | .026 | .088 | .049 | .023 | .061 | .034 | .016 | .036 | .020 | .010 | .012 | .007 | .003 | | |

C Range: 0 - 360DEG
C Interval: 15.0DEG
Test Speed: HIGH
Temperature:25DEG
Operators:SENPU
Test Date:2024-06-14

γ Range: 0 - 100DEG
γ Interval: 1.0DEG
Test System:EVERFINE GO-2000B_V1 SYSTEM V2.00.444
Humidity:61%
Test Distance:8.000m [K=1.0000]
Remarks:

UGR(Unified Glare Rating) Table

| | | | | | | | | | | |
|--|------------------|------|------|------|-------|----------------|------|------------------|------|------|
| Test:U:221.50V I:0.126A P:26.30W PF:0.941 Freq:50.00Hz Lamp Flux:3128.75x1 lm | | | | | | | | | | |
| NAME: G2-MP25-WW9380DA | | | | | TYPE: | | | WEIGHT: | | |
| SPEC.: | | | | | DIM.: | | | SERIAL No.: | | |
| MFR.: | | | | | SUR.: | | | Shielding Angle: | | |
| ceiling/cavity | 0.7 | 0.7 | 0.5 | 0.5 | 0.3 | 0.7 | 0.7 | 0.5 | 0.5 | 0.3 |
| walls | 0.5 | 0.3 | 0.5 | 0.3 | 0.3 | 0.5 | 0.3 | 0.5 | 0.3 | 0.3 |
| working plane | 0.2 | 0.2 | 0.2 | 0.2 | 0.2 | 0.2 | 0.2 | 0.2 | 0.2 | 0.2 |
| Room dimensions | Viewed crosswise | | | | | Viewed endwise | | | | |
| x = 2H y = 2H | 15.5 | 16.6 | 15.7 | 16.8 | 16.9 | 15.9 | 16.9 | 16.1 | 17.1 | 17.3 |
| 3H | 15.4 | 16.4 | 15.7 | 16.6 | 16.8 | 15.8 | 16.8 | 16.0 | 17.0 | 17.2 |
| 4H | 15.3 | 16.3 | 15.6 | 16.5 | 16.7 | 15.7 | 16.6 | 16.0 | 16.9 | 17.1 |
| 6H | 15.3 | 16.1 | 15.6 | 16.4 | 16.6 | 15.6 | 16.5 | 15.9 | 16.8 | 17.0 |
| 8H | 15.2 | 16.1 | 15.5 | 16.3 | 16.6 | 15.6 | 16.4 | 15.9 | 16.7 | 17.0 |
| 12H | 15.2 | 16.0 | 15.5 | 16.2 | 16.5 | 15.6 | 16.4 | 15.9 | 16.6 | 16.9 |
| 4H 2H | 15.3 | 16.2 | 15.6 | 16.4 | 16.7 | 15.6 | 16.6 | 15.9 | 16.8 | 17.0 |
| 3H | 15.2 | 16.0 | 15.5 | 16.3 | 16.6 | 15.6 | 16.4 | 15.9 | 16.6 | 16.9 |
| 4H | 15.2 | 15.9 | 15.5 | 16.2 | 16.5 | 15.5 | 16.2 | 15.9 | 16.5 | 16.9 |
| 6H | 15.1 | 15.7 | 15.5 | 16.1 | 16.4 | 15.5 | 16.1 | 15.8 | 16.4 | 16.8 |
| 8H | 15.0 | 15.6 | 15.4 | 16.0 | 16.4 | 15.4 | 16.0 | 15.8 | 16.4 | 16.7 |
| 12H | 15.0 | 15.5 | 15.4 | 15.9 | 16.3 | 15.4 | 15.9 | 15.8 | 16.3 | 16.7 |
| 8H 4H | 15.0 | 15.6 | 15.4 | 16.0 | 16.3 | 15.4 | 16.0 | 15.8 | 16.3 | 16.7 |
| 6H | 15.0 | 15.5 | 15.4 | 15.9 | 16.3 | 15.4 | 15.8 | 15.8 | 16.2 | 16.6 |
| 8H | 14.9 | 15.4 | 15.4 | 15.8 | 16.2 | 15.3 | 15.7 | 15.8 | 16.2 | 16.6 |
| 12H | 14.9 | 15.3 | 15.4 | 15.7 | 16.2 | 15.3 | 15.7 | 15.8 | 16.1 | 16.6 |
| 12H 4H | 15.0 | 15.5 | 15.4 | 15.9 | 16.3 | 15.4 | 15.9 | 15.8 | 16.3 | 16.7 |
| 6H | 14.9 | 15.4 | 15.4 | 15.8 | 16.2 | 15.3 | 15.7 | 15.8 | 16.1 | 16.6 |
| 8H | 14.9 | 15.3 | 15.4 | 15.7 | 16.2 | 15.3 | 15.6 | 15.8 | 16.1 | 16.6 |
| Variations with the observer position at spacings(CIE Pub.117): | | | | | | | | | | |
| S = 1.0H | + 2.5 / - 8.4 | | | | | + 2.3 / - 7.3 | | | | |
| 1.5H | + 4.9 / - 8.1 | | | | | + 4.6 / - 7.0 | | | | |
| 2.0H | + 0.5 / - 0.6 | | | | | + 3.5 / - 0.9 | | | | |

CIE Pub.117, 3129 lm Total Lamp Luminous Flux Corrected ($8\log(F/F_0) = 4.0$)
Area: 0.103 m²

C Range: 0 - 360DEG
C Interval: 15.0DEG
Test Speed: HIGH
Temperature:25DEG
Operators:SENPU
Test Date:2024-06-14

γ Range: 0 - 100DEG
 γ Interval: 1.0DEG
Test System:EVERFINE GO-2000B_V1 SYSTEM V2.00.444
Humidity:61%
Test Distance:8.000m [K=1.0000]
Remarks:

UTILIZATION FACTORS TABLE

| | | |
|--|-------|------------------|
| Test:U:221.50V I:0.126A P:26.30W PF:0.941 Freq:50.00Hz Lamp Flux:3128.75x1 lm | | |
| NAME: G2-MP25-WW9380DA | TYPE: | WEIGHT: |
| SPEC.: | DIM.: | SERIAL No.: |
| MFR.: | SUR.: | Shielding Angle: |

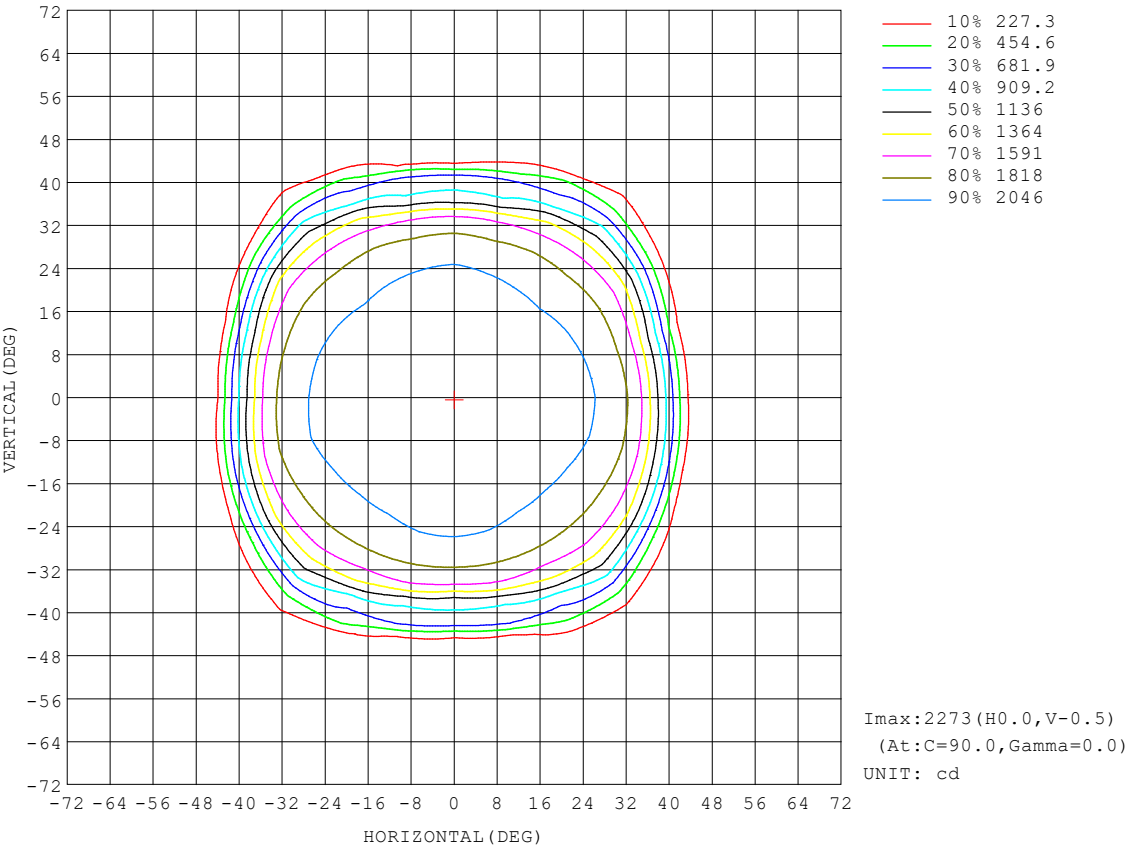
| REFLECTANCE | | | | | | | | | | |
|----------------------------------|--|-----|-----------|-----|-----|-----|-----|---------------|-----|--------|
| Ceiling | 0.8 | 0.8 | 0.8 | 0.7 | 0.7 | 0.7 | 0.5 | 0.5 | 0.5 | 0 |
| Walls | 0.7 | 0.5 | 0.3 | 0.7 | 0.5 | 0.3 | 0.7 | 0.5 | 0.3 | 0 |
| Working plane | 0.2 | 0.2 | 0.2 | 0.2 | 0.2 | 0.2 | 0.2 | 0.2 | 0.2 | 0 |
| ROOM INDEX | UTILIZATION FACTORS (PERCENT) $k(RI) \times RCR = 5$ | | | | | | | | | |
| $k = 0.60$ | 83 | 76 | 72 | 83 | 76 | 72 | 82 | 76 | 72 | 68 |
| 0.80 | 91 | 85 | 81 | 91 | 85 | 81 | 89 | 84 | 80 | 76 |
| 1.00 | 97 | 90 | 86 | 96 | 90 | 86 | 94 | 90 | 86 | 81 |
| 1.25 | 101 | 95 | 92 | 100 | 95 | 91 | 98 | 94 | 90 | 86 |
| 1.50 | 104 | 99 | 95 | 103 | 98 | 95 | 101 | 97 | 94 | 89 |
| 2.00 | 107 | 103 | 99 | 106 | 102 | 98 | 103 | 100 | 97 | 92 |
| 2.50 | 109 | 105 | 102 | 108 | 104 | 101 | 104 | 101 | 99 | 93 |
| 3.00 | 111 | 107 | 104 | 109 | 106 | 103 | 106 | 103 | 101 | 94 |
| 4.00 | 113 | 110 | 108 | 111 | 108 | 106 | 107 | 105 | 103 | 96 |
| 5.00 | 114 | 112 | 110 | 112 | 110 | 108 | 108 | 107 | 105 | 97 |
| ROOM INDEX | UF (total) | | | | | | | | | Direct |
| According to DIN EN 13032-2 2004 | | | Suspended | | | | | SHRNOM = 1.25 | | |

C Range: 0 - 360DEG
 C Interval: 15.0DEG
 Test Speed: HIGH
 Temperature: 25DEG
 Operators: SENPU
 Test Date: 2024-06-14

γ Range: 0 - 100DEG
 γ Interval: 1.0DEG
 Test System: EVERFINE GO-2000B_V1 SYSTEM V2.00.444
 Humidity: 61%
 Test Distance: 8.000m [K=1.0000]
 Remarks:

ISOCANDELA DIAGRAM

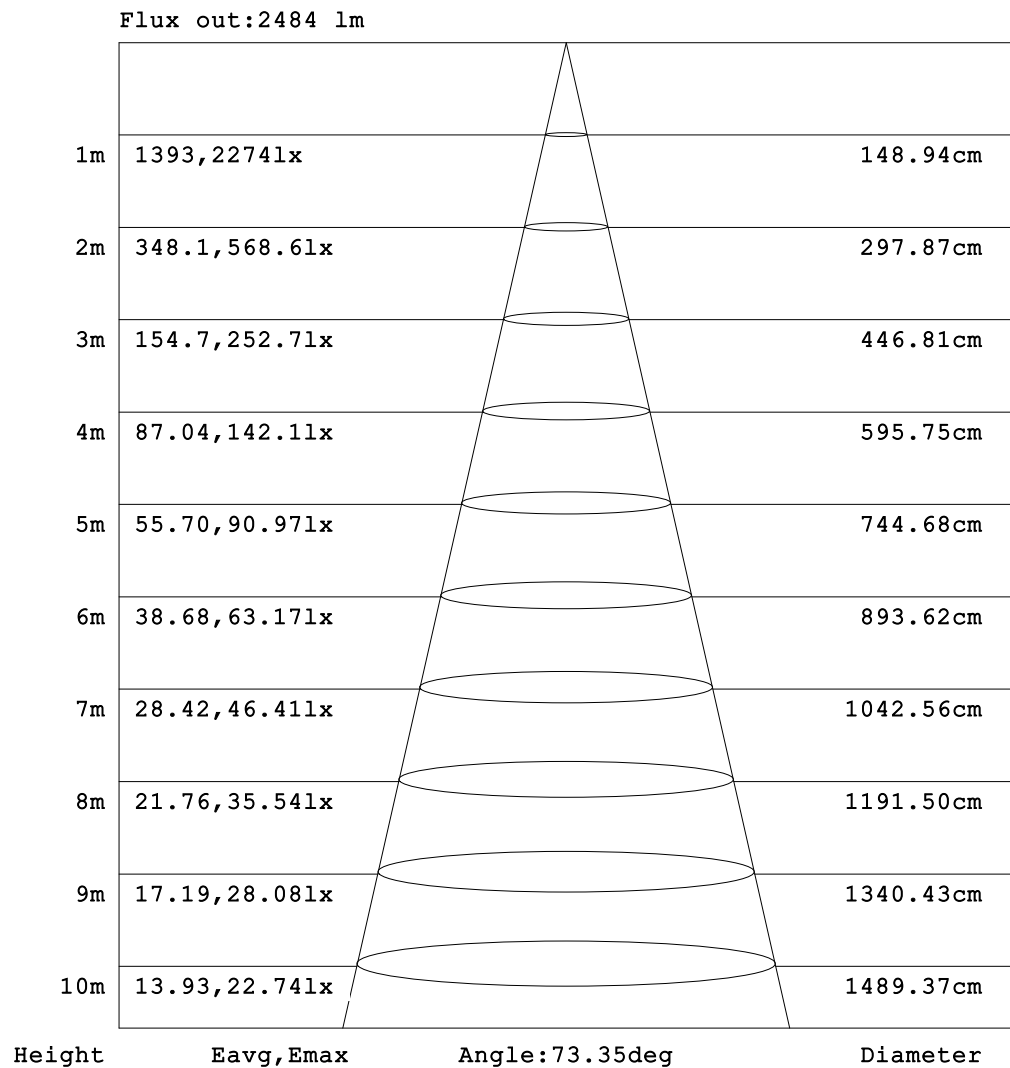
| | | |
|--|-------|------------------|
| Test:U:221.50V I:0.126A P:26.30W PF:0.941 Freq:50.00Hz | | |
| Lamp Flux:3128.75x1 lm | | |
| NAME: G2-MP25-WW9380DA | TYPE: | WEIGHT: |
| SPEC.: | DIM.: | SERIAL No.: |
| MFR.: | SUR.: | Shielding Angle: |



| | |
|----------------------|---|
| C Range: 0 - 360DEG | γ Range: 0 - 100DEG |
| C Interval: 15.0DEG | γ Interval: 1.0DEG |
| Test Speed: HIGH | Test System:EVERFINE GO-2000B_V1 SYSTEM V2.00.444 |
| Temperature:25DEG | Humidity:61% |
| Operators:SENPU | Test Distance:8.000m [K=1.0000] |
| Test Date:2024-06-14 | Remarks: |

AAI Figure

| | | |
|--|-------|------------------|
| Test:U:221.50V I:0.126A P:26.30W PF:0.941 Freq:50.00Hz Lamp Flux:3128.75x1 lm | | |
| NAME: G2-MP25-WW9380DA | TYPE: | WEIGHT: |
| SPEC.: | DIM.: | SERIAL No.: |
| MFR.: | SUR.: | Shielding Angle: |



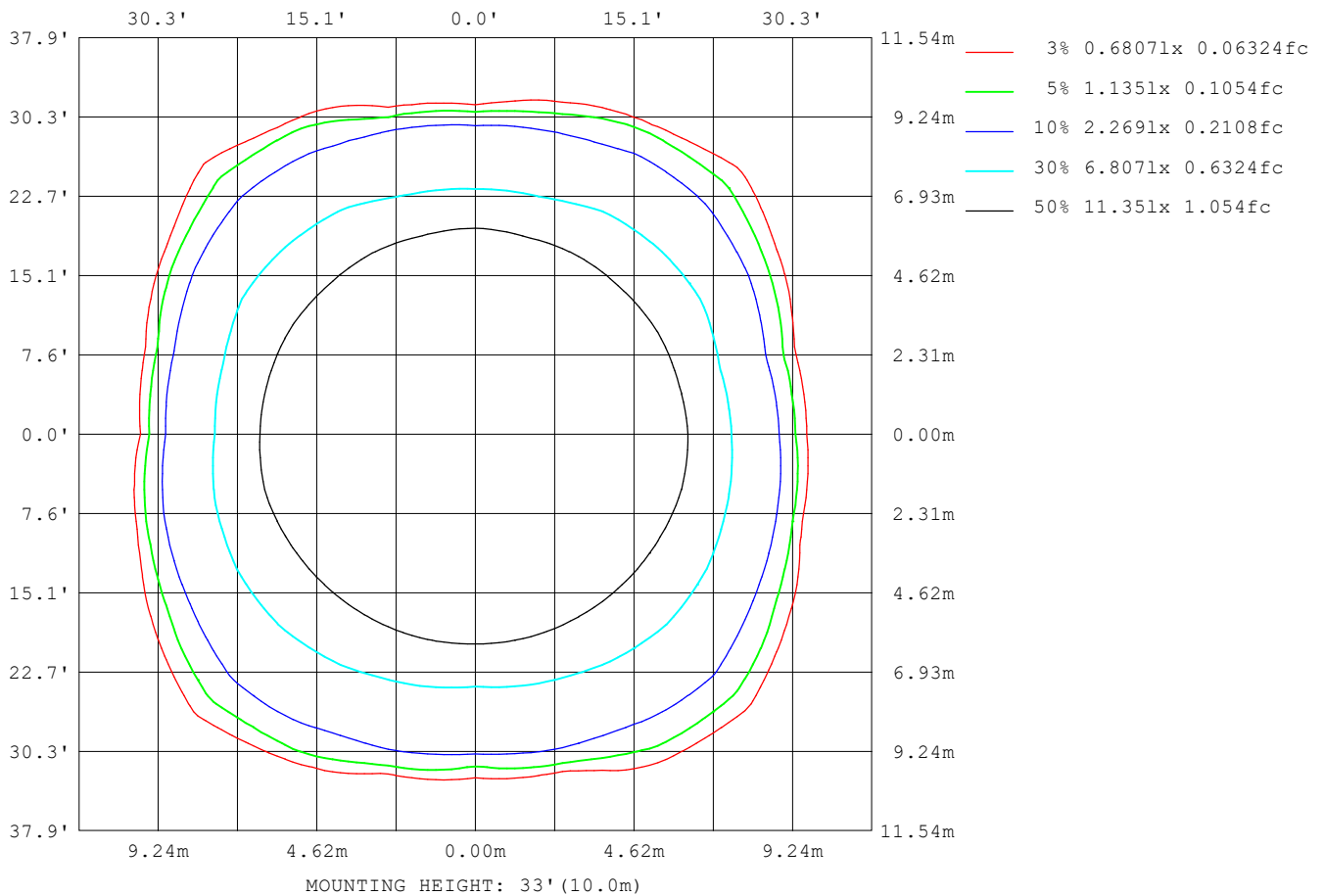
Note: The Curves indicate the illuminated area and the average illumination when the luminaire is at different distance.

C Range: 0 - 360DEG
C Interval: 15.0DEG
Test Speed: HIGH
Temperature: 25DEG
Operators: SENPU
Test Date: 2024-06-14

γ Range: 0 - 100DEG
γ Interval: 1.0DEG
Test System: EVERFINE GO-2000B_V1 SYSTEM V2.00.444
Humidity: 61%
Test Distance: 8.000m [K=1.0000]
Remarks:

ISOLUX DIAGRAM

| | | |
|--|-------|------------------|
| Test:U:221.50V I:0.126A P:26.30W PF:0.941 Freq:50.00Hz Lamp Flux:3128.75x1 lm | | |
| NAME: G2-MP25-WW9380DA | TYPE: | WEIGHT: |
| SPEC.: | DIM.: | SERIAL No.: |
| MFR.: | SUR.: | Shielding Angle: |



C Range: 0 - 360DEG
 C Interval: 15.0DEG
 Test Speed: HIGH
 Temperature: 25DEG
 Operators: SENPU
 Test Date: 2024-06-14

γ Range: 0 - 100DEG
 γ Interval: 1.0DEG
 Test System: EVERFINE GO-2000B_V1 SYSTEM V2.00.444
 Humidity: 61%
 Test Distance: 8.000m [K=1.0000]
 Remarks:

LED Avg.L Report

| | | |
|--|-------|------------------|
| Test:U:221.50V I:0.126A P:26.30W PF:0.941 Freq:50.00Hz Lamp Flux:3128.75x1 lm | | |
| NAME: G2-MP25-WW9380DA | TYPE: | WEIGHT: |
| SPEC.: | DIM.: | SERIAL No.: |
| MFR.: | SUR.: | Shielding Angle: |

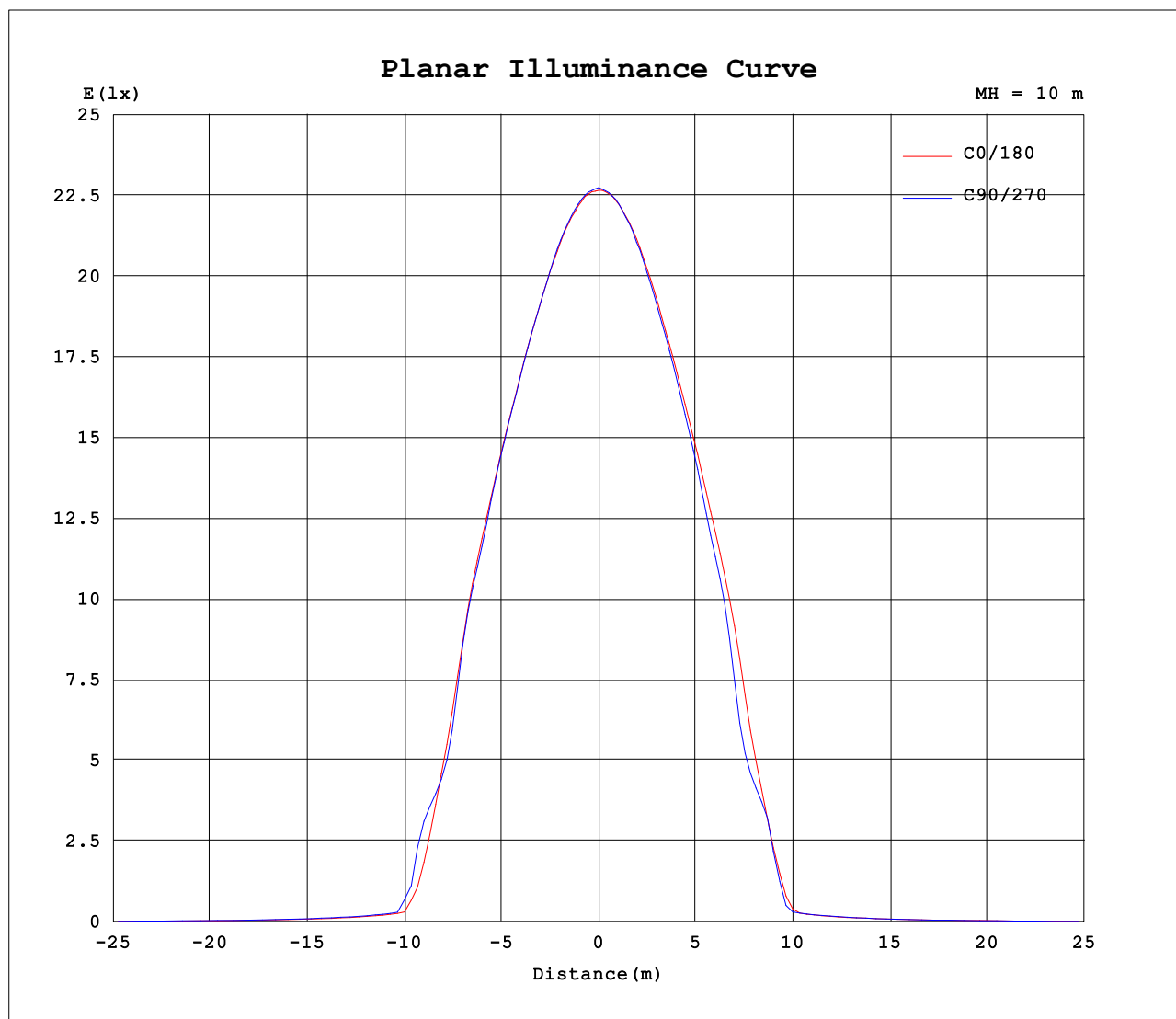
| AvgL | cd/m2 |
|------------------|-------|
| L_0~180 (65) av | 808 |
| L_0~180 (75) av | 484 |
| L_0~180 (85) av | 306 |
| L_90~270 (65) av | 827 |
| L_90~270 (75) av | 495 |
| L_90~270 (85) av | 337 |
| L_45 (65) av | 817 |
| L_45 (75) av | 501 |
| L_45 (85) av | 326 |

Standard: GB/T 29293-2012

C Range: 0 - 360DEG
C Interval: 15.0DEG
Test Speed: HIGH
Temperature:25DEG
Operators:SENPU
Test Date:2024-06-14

γ Range: 0 - 100DEG
γ Interval: 1.0DEG
Test System:EVERFINE GO-2000B_V1 SYSTEM V2.00.444
Humidity:61%
Test Distance:8.000m [K=1.0000]
Remarks:

Planar Illuminance Curve



C Range: 0 - 360DEG
C Interval: 15.0DEG
Test Speed: HIGH
Temperature: 25DEG
Operators: SENPU
Test Date: 2024-06-14

γ Range: 0 - 100DEG
 γ Interval: 1.0DEG
Test System: EVERFINE GO-2000B_V1 SYSTEM V2.00.444
Humidity: 61%
Test Distance: 8.000m [K=1.0000]
Remarks:

LUMINOUS DISTRIBUTION INTENSITY DATA

| | | |
|--|-------|------------------|
| Test:U:221.50V I:0.126A P:26.30W PF:0.941 Freq:50.00Hz | | |
| Lamp Flux:3128.75x1 lm | | |
| NAME: G2-MP25-WW9380DA | TYPE: | WEIGHT: |
| SPEC.: | DIM.: | SERIAL No.: |
| MFR.: | SUR.: | Shielding Angle: |

| Table--1 | | | | | | | | | | | | | | | | | UNIT: cd | | | |
|--------------------|------|------|------|------|------|------|------|------|------|------|------|------|------|------|------|------|----------|------|------|--|
| C (DEG) γ (DEG) | 0 | 15 | 30 | 45 | 60 | 75 | 90 | 105 | 120 | 135 | 150 | 165 | 180 | 195 | 210 | 225 | 240 | 255 | 270 | |
| 0 | 2266 | 2269 | 2270 | 2271 | 2271 | 2270 | 2274 | 2272 | 2273 | 2271 | 2270 | 2272 | 2266 | 2269 | 2270 | 2271 | 2271 | 2270 | 2274 | |
| 5 | 2258 | 2259 | 2260 | 2262 | 2262 | 2264 | 2264 | 2268 | 2268 | 2267 | 2268 | 2267 | 2261 | 2263 | 2265 | 2263 | 2263 | 2262 | 2264 | |
| 10 | 2237 | 2237 | 2238 | 2239 | 2237 | 2241 | 2241 | 2246 | 2243 | 2245 | 2249 | 2253 | 2241 | 2243 | 2245 | 2240 | 2238 | 2237 | 2237 | |
| 15 | 2197 | 2200 | 2193 | 2194 | 2190 | 2198 | 2198 | 2204 | 2200 | 2208 | 2209 | 2218 | 2209 | 2205 | 2203 | 2194 | 2192 | 2190 | 2193 | |
| 20 | 2146 | 2144 | 2128 | 2124 | 2122 | 2142 | 2144 | 2145 | 2134 | 2141 | 2149 | 2166 | 2155 | 2149 | 2140 | 2118 | 2125 | 2130 | 2132 | |
| 25 | 2072 | 2070 | 2039 | 2023 | 2027 | 2057 | 2067 | 2063 | 2040 | 2045 | 2063 | 2093 | 2086 | 2073 | 2050 | 2021 | 2026 | 2033 | 2039 | |
| 30 | 1929 | 1935 | 1903 | 1888 | 1887 | 1909 | 1898 | 1920 | 1909 | 1915 | 1941 | 1979 | 1955 | 1938 | 1918 | 1877 | 1876 | 1838 | 1843 | |
| 35 | 1577 | 1651 | 1651 | 1655 | 1589 | 1612 | 1561 | 1636 | 1629 | 1705 | 1720 | 1744 | 1667 | 1658 | 1678 | 1623 | 1562 | 1438 | 1362 | |
| 40 | 811 | 935 | 1092 | 1206 | 986 | 866 | 883 | 883 | 1050 | 1279 | 1245 | 1089 | 913 | 933 | 1131 | 1148 | 901 | 809 | 828 | |
| 45 | 87.6 | 132 | 335 | 586 | 544 | 253 | 194 | 307 | 586 | 662 | 448 | 271 | 113 | 173 | 366 | 492 | 417 | 154 | 86.0 | |
| 50 | 62.5 | 65.9 | 74.1 | 112 | 79.9 | 73.7 | 71.8 | 74.6 | 82.1 | 186 | 81.7 | 69.3 | 63.5 | 64.7 | 73.6 | 88.7 | 74.0 | 66.5 | 65.3 | |
| 55 | 51.7 | 53.9 | 56.8 | 64.6 | 61.4 | 59.5 | 58.3 | 59.8 | 62.6 | 69.3 | 59.0 | 55.4 | 52.1 | 52.5 | 55.3 | 58.8 | 56.8 | 53.7 | 52.9 | |
| 60 | 43.6 | 44.7 | 46.0 | 49.5 | 48.9 | 47.6 | 47.2 | 48.0 | 50.0 | 50.8 | 47.7 | 45.8 | 43.6 | 43.7 | 44.5 | 46.0 | 45.0 | 43.5 | 43.2 | |
| 65 | 35.0 | 36.6 | 36.6 | 37.3 | 38.5 | 39.1 | 38.2 | 39.5 | 39.4 | 38.8 | 37.9 | 38.1 | 35.4 | 35.2 | 35.1 | 33.8 | 35.3 | 34.1 | 33.8 | |
| 70 | 23.8 | 25.6 | 25.9 | 25.2 | 27.5 | 27.8 | 26.8 | 28.3 | 28.5 | 26.7 | 27.6 | 27.6 | 24.5 | 24.4 | 24.6 | 22.1 | 24.4 | 23.0 | 22.3 | |
| 75 | 12.8 | 13.9 | 14.8 | 14.5 | 15.6 | 15.5 | 14.9 | 16.0 | 16.7 | 15.7 | 16.3 | 15.6 | 13.1 | 13.1 | 13.6 | 12.2 | 12.9 | 11.7 | 11.5 | |
| 80 | 6.57 | 7.22 | 7.51 | 7.78 | 8.09 | 8.35 | 8.11 | 8.65 | 8.66 | 8.43 | 8.29 | 8.09 | 6.71 | 6.49 | 6.45 | 5.91 | 6.06 | 5.73 | 5.57 | |
| 85 | 2.79 | 3.16 | 3.48 | 3.70 | 3.95 | 4.12 | 4.11 | 4.34 | 4.34 | 4.15 | 4.00 | 3.72 | 2.70 | 2.48 | 2.39 | 2.11 | 2.13 | 2.00 | 1.94 | |
| 90 | 0.50 | 0.84 | 1.23 | 1.27 | 1.29 | 1.13 | 0.86 | 1.26 | 1.46 | 1.51 | 1.43 | 1.06 | 0.12 | 0.15 | 0.08 | 0.13 | 0.03 | 0.08 | 0.01 | |
| 95 | 0.50 | 0.53 | 0.48 | 0.51 | 0.46 | 0.47 | 0.39 | 0.48 | 0.49 | 0.51 | 0.47 | 0.49 | 0.03 | 0.04 | 0.03 | 0.03 | 0.02 | 0.03 | 0.00 | |
| 100 | 0.61 | 0.60 | 0.55 | 0.59 | 0.54 | 0.54 | 0.53 | 0.53 | 0.53 | 0.54 | 0.54 | 0.54 | 0.03 | 0.04 | 0.04 | 0.03 | 0.03 | 0.03 | 0.00 | |
| 105 | 0.00 | 0.00 | 0.00 | 0.00 | 0.00 | 0.00 | 0.00 | 0.00 | 0.00 | 0.00 | 0.00 | 0.00 | 0.00 | 0.00 | 0.00 | 0.00 | 0.00 | 0.00 | 0.00 | |
| 110 | 0.00 | 0.00 | 0.00 | 0.00 | 0.00 | 0.00 | 0.00 | 0.00 | 0.00 | 0.00 | 0.00 | 0.00 | 0.00 | 0.00 | 0.00 | 0.00 | 0.00 | 0.00 | 0.00 | |
| 115 | 0.00 | 0.00 | 0.00 | 0.00 | 0.00 | 0.00 | 0.00 | 0.00 | 0.00 | 0.00 | 0.00 | 0.00 | 0.00 | 0.00 | 0.00 | 0.00 | 0.00 | 0.00 | 0.00 | |
| 120 | 0.00 | 0.00 | 0.00 | 0.00 | 0.00 | 0.00 | 0.00 | 0.00 | 0.00 | 0.00 | 0.00 | 0.00 | 0.00 | 0.00 | 0.00 | 0.00 | 0.00 | 0.00 | 0.00 | |
| 125 | 0.00 | 0.00 | 0.00 | 0.00 | 0.00 | 0.00 | 0.00 | 0.00 | 0.00 | 0.00 | 0.00 | 0.00 | 0.00 | 0.00 | 0.00 | 0.00 | 0.00 | 0.00 | 0.00 | |
| 130 | 0.00 | 0.00 | 0.00 | 0.00 | 0.00 | 0.00 | 0.00 | 0.00 | 0.00 | 0.00 | 0.00 | 0.00 | 0.00 | 0.00 | 0.00 | 0.00 | 0.00 | 0.00 | 0.00 | |
| 135 | 0.00 | 0.00 | 0.00 | 0.00 | 0.00 | 0.00 | 0.00 | 0.00 | 0.00 | 0.00 | 0.00 | 0.00 | 0.00 | 0.00 | 0.00 | 0.00 | 0.00 | 0.00 | 0.00 | |
| 140 | 0.00 | 0.00 | 0.00 | 0.00 | 0.00 | 0.00 | 0.00 | 0.00 | 0.00 | 0.00 | 0.00 | 0.00 | 0.00 | 0.00 | 0.00 | 0.00 | 0.00 | 0.00 | 0.00 | |
| 145 | 0.00 | 0.00 | 0.00 | 0.00 | 0.00 | 0.00 | 0.00 | 0.00 | 0.00 | 0.00 | 0.00 | 0.00 | 0.00 | 0.00 | 0.00 | 0.00 | 0.00 | 0.00 | 0.00 | |
| 150 | 0.00 | 0.00 | 0.00 | 0.00 | 0.00 | 0.00 | 0.00 | 0.00 | 0.00 | 0.00 | 0.00 | 0.00 | 0.00 | 0.00 | 0.00 | 0.00 | 0.00 | 0.00 | 0.00 | |
| 155 | 0.00 | 0.00 | 0.00 | 0.00 | 0.00 | 0.00 | 0.00 | 0.00 | 0.00 | 0.00 | 0.00 | 0.00 | 0.00 | 0.00 | 0.00 | 0.00 | 0.00 | 0.00 | 0.00 | |
| 160 | 0.00 | 0.00 | 0.00 | 0.00 | 0.00 | 0.00 | 0.00 | 0.00 | 0.00 | 0.00 | 0.00 | 0.00 | 0.00 | 0.00 | 0.00 | 0.00 | 0.00 | 0.00 | 0.00 | |
| 165 | 0.00 | 0.00 | 0.00 | 0.00 | 0.00 | 0.00 | 0.00 | 0.00 | 0.00 | 0.00 | 0.00 | 0.00 | 0.00 | 0.00 | 0.00 | 0.00 | 0.00 | 0.00 | 0.00 | |
| 170 | 0.00 | 0.00 | 0.00 | 0.00 | 0.00 | 0.00 | 0.00 | 0.00 | 0.00 | 0.00 | 0.00 | 0.00 | 0.00 | 0.00 | 0.00 | 0.00 | 0.00 | 0.00 | 0.00 | |
| 175 | 0.00 | 0.00 | 0.00 | 0.00 | 0.00 | 0.00 | 0.00 | 0.00 | 0.00 | 0.00 | 0.00 | 0.00 | 0.00 | 0.00 | 0.00 | 0.00 | 0.00 | 0.00 | 0.00 | |
| 180 | 0.00 | 0.00 | 0.00 | 0.00 | 0.00 | 0.00 | 0.00 | 0.00 | 0.00 | 0.00 | 0.00 | 0.00 | 0.00 | 0.00 | 0.00 | 0.00 | 0.00 | 0.00 | 0.00 | |

C Range: 0 - 360DEG
C Interval: 15.0DEG
Test Speed: HIGH
Temperature:25DEG
Operators:SENPU
Test Date:2024-06-14

γ Range: 0 - 100DEG
γ Interval: 1.0DEG
Test System:EVERFINE GO-2000B_V1 SYSTEM V2.00.444
Humidity:61%
Test Distance:8.000m [K=1.0000]
Remarks:

LUMINOUS DISTRIBUTION INTENSITY DATA

| | | |
|--|-------|------------------|
| Test:U:221.50V I:0.126A P:26.30W PF:0.941 Freq:50.00Hz Lamp Flux:3128.75x1 lm | | |
| NAME: G2-MP25-WW9380DA | TYPE: | WEIGHT: |
| SPEC.: | DIM.: | SERIAL No.: |
| MFR.: | SUR.: | Shielding Angle: |

| Table--2 | | | | | | UNIT: cd | | | | | | | | | | | | | |
|--------------------|------|------|------|------|------|----------|--|--|--|--|--|--|--|--|--|--|--|--|--|
| C (DEG) γ (DEG) | 285 | 300 | 315 | 330 | 345 | | | | | | | | | | | | | | |
| 0 | 2272 | 2273 | 2271 | 2270 | 2272 | | | | | | | | | | | | | | |
| 5 | 2262 | 2259 | 2264 | 2262 | 2262 | | | | | | | | | | | | | | |
| 10 | 2233 | 2235 | 2235 | 2235 | 2235 | | | | | | | | | | | | | | |
| 15 | 2185 | 2182 | 2179 | 2188 | 2193 | | | | | | | | | | | | | | |
| 20 | 2118 | 2109 | 2100 | 2120 | 2134 | | | | | | | | | | | | | | |
| 25 | 2019 | 2004 | 1994 | 2023 | 2050 | | | | | | | | | | | | | | |
| 30 | 1816 | 1842 | 1838 | 1875 | 1890 | | | | | | | | | | | | | | |
| 35 | 1382 | 1506 | 1554 | 1594 | 1516 | | | | | | | | | | | | | | |
| 40 | 779 | 816 | 1043 | 966 | 744 | | | | | | | | | | | | | | |
| 45 | 191 | 392 | 414 | 256 | 88.4 | | | | | | | | | | | | | | |
| 50 | 66.1 | 71.9 | 78.9 | 71.1 | 62.4 | | | | | | | | | | | | | | |
| 55 | 53.2 | 56.1 | 57.4 | 54.0 | 51.3 | | | | | | | | | | | | | | |
| 60 | 43.2 | 44.1 | 44.6 | 43.3 | 43.0 | | | | | | | | | | | | | | |
| 65 | 33.6 | 34.5 | 32.5 | 33.9 | 33.7 | | | | | | | | | | | | | | |
| 70 | 22.3 | 23.4 | 20.7 | 23.0 | 22.5 | | | | | | | | | | | | | | |
| 75 | 11.5 | 12.1 | 11.1 | 12.1 | 11.8 | | | | | | | | | | | | | | |
| 80 | 5.52 | 5.65 | 5.36 | 5.70 | 5.68 | | | | | | | | | | | | | | |
| 85 | 1.87 | 1.87 | 1.76 | 1.89 | 1.94 | | | | | | | | | | | | | | |
| 90 | 0.07 | 0.03 | 0.11 | 0.02 | 0.07 | | | | | | | | | | | | | | |
| 95 | 0.03 | 0.03 | 0.04 | 0.02 | 0.03 | | | | | | | | | | | | | | |
| 100 | 0.03 | 0.03 | 0.04 | 0.02 | 0.03 | | | | | | | | | | | | | | |
| 105 | 0.00 | 0.00 | 0.00 | 0.00 | 0.00 | | | | | | | | | | | | | | |
| 110 | 0.00 | 0.00 | 0.00 | 0.00 | 0.00 | | | | | | | | | | | | | | |
| 115 | 0.00 | 0.00 | 0.00 | 0.00 | 0.00 | | | | | | | | | | | | | | |
| 120 | 0.00 | 0.00 | 0.00 | 0.00 | 0.00 | | | | | | | | | | | | | | |
| 125 | 0.00 | 0.00 | 0.00 | 0.00 | 0.00 | | | | | | | | | | | | | | |
| 130 | 0.00 | 0.00 | 0.00 | 0.00 | 0.00 | | | | | | | | | | | | | | |
| 135 | 0.00 | 0.00 | 0.00 | 0.00 | 0.00 | | | | | | | | | | | | | | |
| 140 | 0.00 | 0.00 | 0.00 | 0.00 | 0.00 | | | | | | | | | | | | | | |
| 145 | 0.00 | 0.00 | 0.00 | 0.00 | 0.00 | | | | | | | | | | | | | | |
| 150 | 0.00 | 0.00 | 0.00 | 0.00 | 0.00 | | | | | | | | | | | | | | |
| 155 | 0.00 | 0.00 | 0.00 | 0.00 | 0.00 | | | | | | | | | | | | | | |
| 160 | 0.00 | 0.00 | 0.00 | 0.00 | 0.00 | | | | | | | | | | | | | | |
| 165 | 0.00 | 0.00 | 0.00 | 0.00 | 0.00 | | | | | | | | | | | | | | |
| 170 | 0.00 | 0.00 | 0.00 | 0.00 | 0.00 | | | | | | | | | | | | | | |
| 175 | 0.00 | 0.00 | 0.00 | 0.00 | 0.00 | | | | | | | | | | | | | | |
| 180 | 0.00 | 0.00 | 0.00 | 0.00 | 0.00 | | | | | | | | | | | | | | |

C Range: 0 - 360DEG
C Interval: 15.0DEG
Test Speed: HIGH
Temperature:25DEG
Operators:SENPU
Test Date:2024-06-14

γ Range: 0 - 100DEG
γ Interval: 1.0DEG
Test System:EVERFINE GO-2000B_V1 SYSTEM V2.00.444
Humidity:61%
Test Distance:8.000m [K=1.0000]
Remarks: