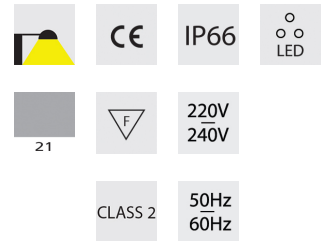
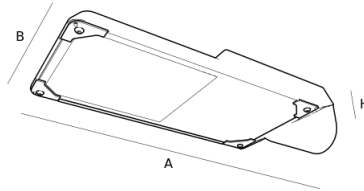
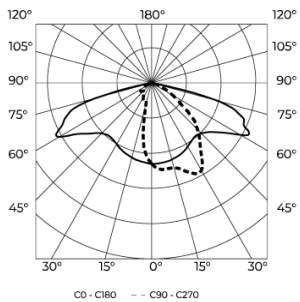


LAHOR 24LED DWC 0.7A /740

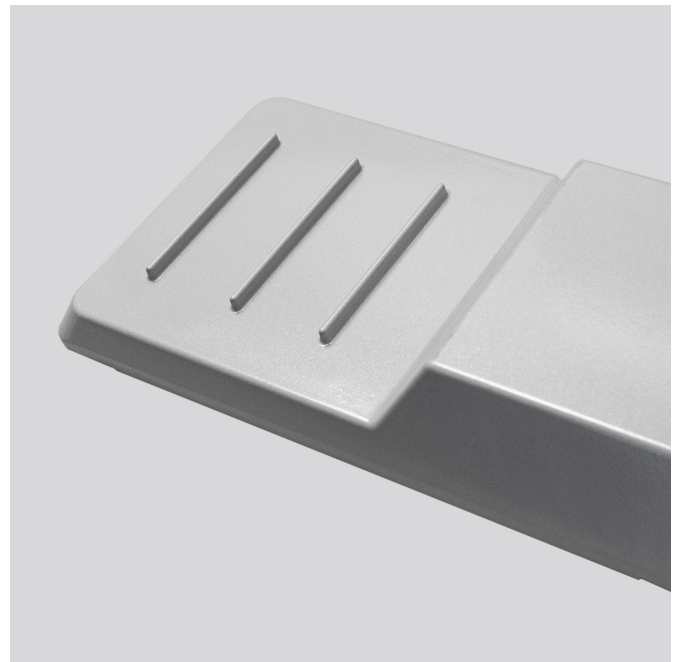


**		A/B/H[mm]	a/b/h[mm]	[kg]	Flux [lm]*	[W]
7053DW0XY	LED	4660/182/86	-	3.00	6783	53.0



CCT
4000 K
CRI
>70

100000h L90B10 / SDCM3



GENERAL High-efficiency LED street luminaire.

OPTICS A wide range of PMMA lenses and tempered glass protector (LOR \geq 0.85).

HOUSING High pressure die-cast aluminum with thermal barrier, epoxy (UV and anti-corrosion) protection. Easy serviceability.

ADVANTAGES Autonomous dimming/ flux reduction, CLO function (Constant Light Output), light intensity adjustment, thermal protection, 6 kV, Pf \geq 0.95. The luminaire is easily serviceable on-site. It is possible to access and replace all luminaire elements.

APPLICATION Direct mounting on arm \varnothing 42-60 mm.

FEATURES DALI, R2M, U6Me2, 10 Kv.

** Replace XY with the color code when ordering (e.g. 11 white, 21 grey, 31 black).

** Add '-5' on ordering code for DALI control gear or

** Add '-4' on ordering code for 1-10V control gear

* Luminaire luminous flux and connected electrical load - initial tolerance of ± 10 % (at ambient temperature of 25°C).