

# OLLIE 60 POWER LED RGBW



## General data:

luminaire body:	PMMA/inox
mounting type:	to the ground, on an adjustable handle
ingress protection IP:	65
operating temperature range:	from -40° to +45°
lifetime L80B10:	50 000h

## Electrical data:

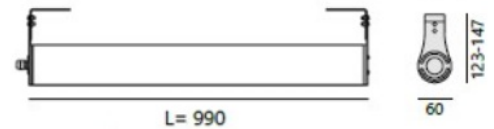
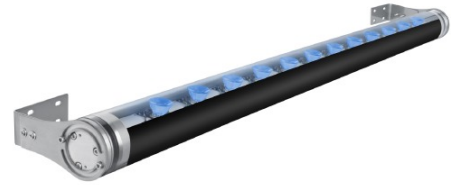
nominal voltage - luminaire power 4W:	max. 4x350mA, max. 4x3V DC
nominal voltage - luminaire power 12W:	max. 4x350mA, max. 4x9V DC
nominal voltage - luminaire power 40W:	max. 4x350mA, max. 4x30V DC
luminaire nominal power:	4W, 12W, 40W
protection class:	III
connection:	wire 8x0,3mm <sup>2</sup>
wiring:	standard
connection wire:	0,5m
dimming/power supply p. 307, 308:	ON-OFF, DALI, DMX, CASAMBI

## Optical data:

optical system:	lens
material:	PMMA
light emission:	direct
light distribution:	symmetrical

## Lighting data:

light source:	LED
luminous flux from luminaire 4W,12W,40W:	248 lm, 744 lm, 1984 lm
tolerance of luminous flux:	+/-10%



The Ollie wall luminaire is designed for illumination of facades with modern and classical architecture. Luminaire diffuser with a diameter of 60mm is made of PMMA. Thanks to RGBW technology, the details of façade can be emphasized by colour or proper white light. Thanks to the mounting brackets, it is possible to precisely position the luminaire in relation to the illuminated surface. Ollie family consists of luminaires with different power and dimensions while maintaining a uniform design.

Catalogue code	Light source	Luminaire light flux	Power	Weight	Dimensions	Box dimensions
9048.105.L	LED	1984 lm	40x1W	2,2kg	990x60x(123-147)mm	1010x140x145mm

## Accessories

embranchment IP67

catalogue code 90.10

