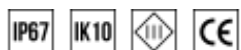


# PISTON 140 LV



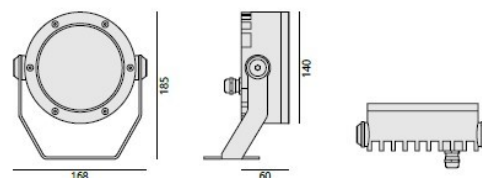
## General data:

Luminaire body:	aluminum
Mounting type:	on an adjustable holder, to the ground
Ingress protection IP:	67
Operating temperature range:	from -40° do +45°
Lifetime L80B10 :	100 000h
Impact protection IK:	10



## Electrical data:

Nominal voltage 8W, 16W, 24W:	50mA, 700mA, 1050mA, max. 25V DC
Luminaire nominal power:	8W, 16W, 24W
Protection class:	III
Connection:	wire 2x1mm <sup>2</sup>
Wiring:	standard
Connection wire:	0,5m
Dimming/power supply p. 306:	ON-OFF, DALI, DMX, CASAMBI



## Optical data:

Optical system:	lens
Material:	PMMA
Light emission:	direct
Light distribution:	symmetrical, asymmetrical

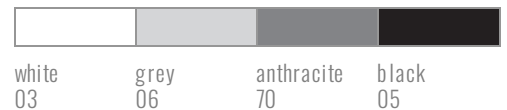
## Lighting data:

Light source:	LED
Luminous flux from luminaire 8W, 16W, 24W:	165 lm, 2331 lm, 2912 lm
Luminous efficacy from luminaire 8W, 16W, 24W:	146 lm/W, 146 lm/W, 121 lm/W
Colour temperature:	2700K, 3000K, 4000K (options: 6500K, amber, red, blue, green)
Colour rendering index:	CRI>80 (options: CRI>90)
Colour tolerance SDCM:	SDCM<3
Tolerance of luminous flux:	+/-10%

Piston is a luminaire designed to illuminate the facades of historic buildings, modern architecture and elements of urban architecture. A wide selection of optics allows to achieve the designed effect of lighting of the objects. The use of an appropriate lighting control system allows for unique lighting scenes. IP 67 protection class means that the luminaire perfectly withstands tough weather conditions. Piston is a family of luminaires with different power and dimensions while maintaining a uniform design.

#### L - beam angle

10 - 10 °  
20 - 20 °  
30 - 30 °  
40 - 40 °  
60 - 60 °  
41 - 10 ° x 45 °  
8 - 8 ° wall-washing  
45 - 45 ° wall-washing  
02 - asymmetrical



white 03      grey 06      anthracite 70      black 05

#### C - colour

Catalogue code	Luminaire light flux	Power	Color temperature	Weight	Dimensions	Box dimensions	CRI/RA
90211.21114 1LC	1019lm	8W	27 00K	1,7 kg	Ø 140mm, H=185mm	190x190x140mm	...
90211.31114 1LC	1095lm	8W	3000K	1,7 kg	Ø 140mm, H=185mm	190x190x140mm	...
90211.41114 1LC	1165lm	8W	4000K	1,7 kg	Ø 140mm, H=185mm	190x190x140mm	...
90211.22214 1LC	2037lm	16W	27 00K	1,7 kg	Ø140mm, H=185mm	190x190x140mm	≥80
90211.32214 1LC	2191lm	16W	3000K	1,7 kg	Ø140mm, H=185mm	190x190x140mm	≥80
90211.42214 1LC	2331lm	16W	4000K	1,7 kg	Ø140mm, H=185mm	190x190x140mm	≥80
90211.23314 1LC	2546lm	24 W	27 00K	1,7 kg	Ø140mm, H=185mm	190x190x140mm	≥80
90211.33314 1LC	2737lm	24 W	3000K	1,7 kg	Ø140mm, H=185mm	190x190x140mm	≥80
90211.43314 1LC	2912lm	24 W	4000K	1,7 kg	Ø140mm, H=185mm	190x190x140mm	≥80

## Accessories

connector IP68

catalogue code 124.00



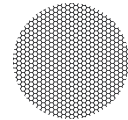
embranchment IP67

catalogue code 90.10



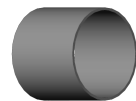
honeycomb (anti-glare)

catalogue code 90.04



anti-glare cover 360

catalogue code 90.05C



anti-glare cover 180

catalogue code 90.06C



Anchor 300

catalogue code 90.36

