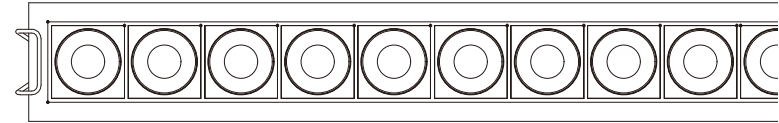
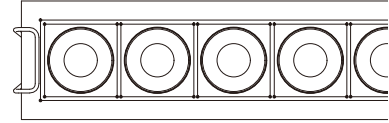
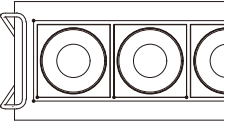


grace

ALIGN
Installation Manual



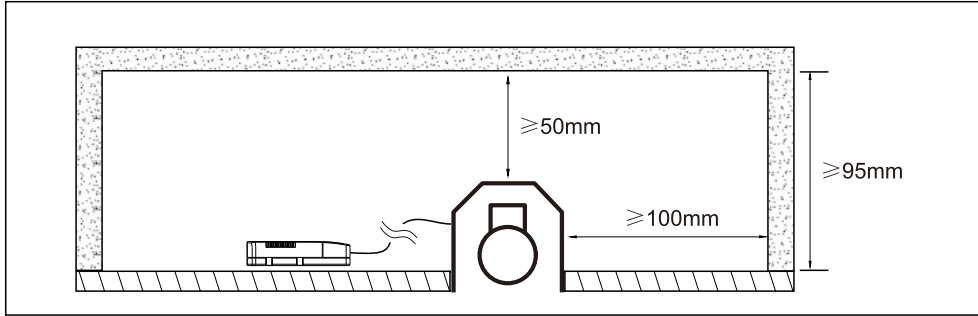
Safety Instruction:

1. Turn off power before installation or before doing any maintenance work.
2. Do not install any luminaire near a heat source.
3. For Outdoor and Indoor use.
4. Do not exceed the nominal supply voltage or amperage ratings.
5. All wiring and installation of this luminaire must adhere to local and national wiring rules eg AS/NZS 3000:2007 Amendment 2:2012

Electrical Installation

6. Take care not to pull any electrical wires during unpacking as this may damage the connection.
7. Lay out all the components on a smooth surface and make sure there are no components missing before assembling.
8. To avoid injury or damage to the fitting, please ensure that power leads and screws are secure before connecting the power.
9. Please keep instructions for future reference.

IC-F Installation Instruction

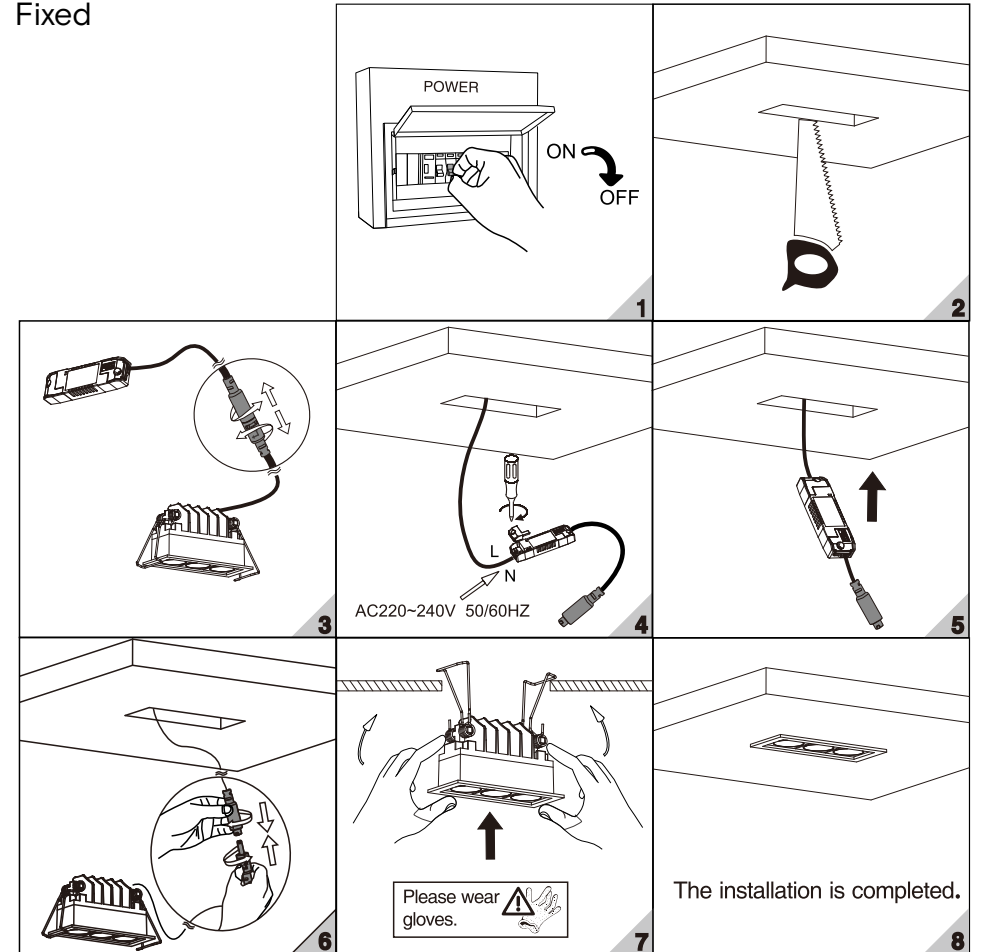


Recessed luminaires and their associated equipment may pose a risk of fire or damage to property if not installed and maintained correctly. Novii recommends a clearance of 25mm to building elements for optimum lifespan.

This data sheet contains information necessary to ensure compliance with the New Zealand Electrical Code of Practice for Installation and Maintenance of Recessed Luminaires and Associated Equipment AS/NZS 60598.2.2:2001

Installation Procedure

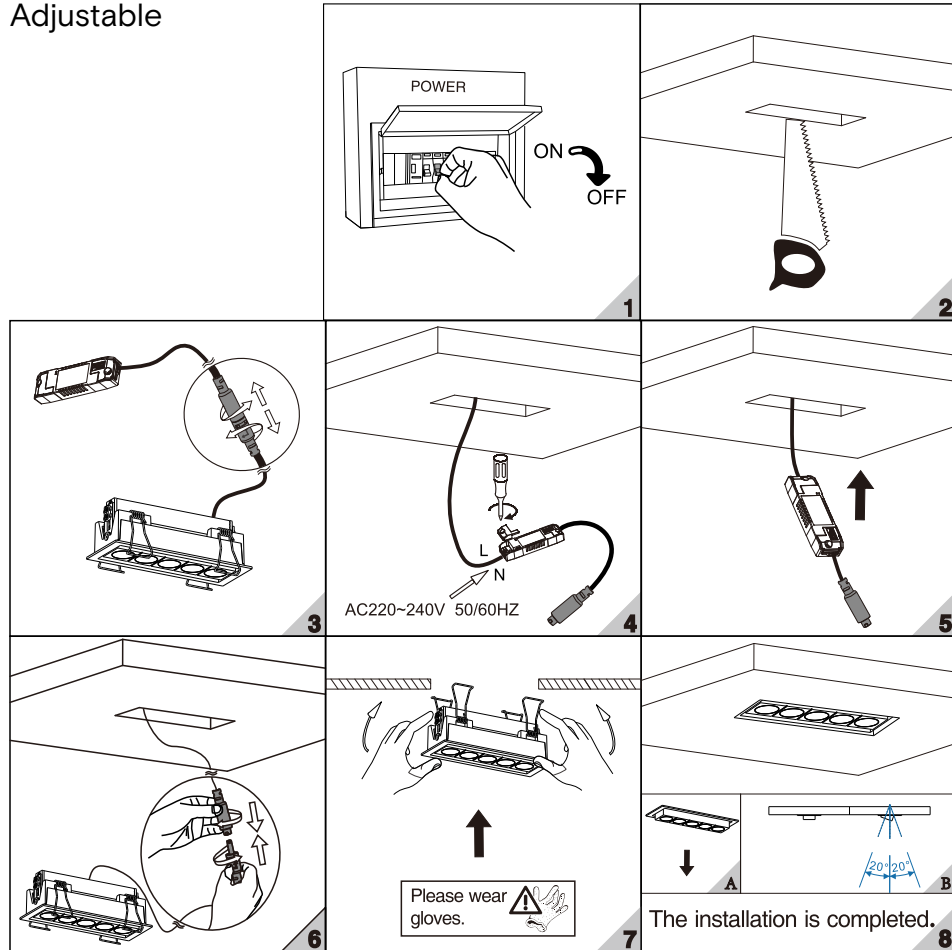
Fixed



| Model SKU | Dimensions (mm) | Cutout (mm) | IP rating |
|-----------|-----------------|-------------|-----------|
| G2-AL7F | L71xW31xH43 | L64xW25 | 20-54 |
| G2-AL12F | L111xW31xH43 | L104xW25 | 20-54 |
| G2-AL24F | L211xW31xH43 | L204xW25 | 20-54 |

Installation Procedure

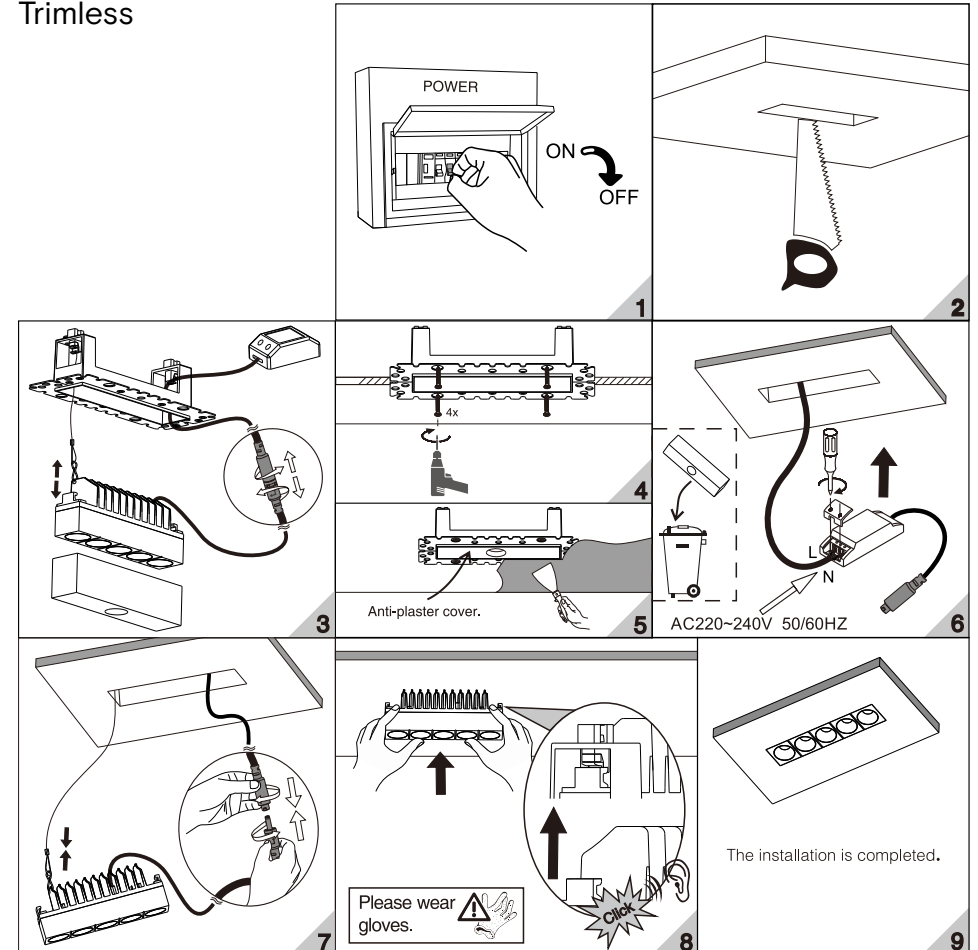
Adjustable



| Model SKU | Dimensions (mm) | Cutout (mm) | IP rating |
|-----------|-----------------|-------------|-----------|
| G2-AL7A | L78xW44xH43 | L72xW38 | 20 |
| G2-AL12A | L118xW44xH43 | L112xW38 | 20 |
| G2-AL24A | L218xW44xH43 | L212xW38 | 20 |

Installation Procedure

Trimless



| Model SKU | Dimensions (mm) | Cutout (mm) | IP rating |
|-----------|-----------------|-------------|-----------|
| G2-AL7T | L94xW54xH43 | L68xW28 | 20 |
| G2-AL12T | L134xW54xH43 | L108xW28 | 20 |
| G2-AL24T | L234xW54xH43 | L208xW28 | 20 |