

Midpoint W7 | Wall



DE LED-Strahler für Wandanbaumontage. Direkt-indirektstrahlend. Konverter in Leuchtenkörper integriert, wahlweise einfach schaltbar oder stufenlos dimmbar (DALI). Gehäuse aus Aluminium in weiß, silber, schwarz oder champagnerfarben lackiert. Weitere Oberflächenoptionen siehe Lightnet Surface Collection oder RAL nach Wahl. LED Engine wahlweise XICATO ARTIST für höchste Lichtqualität mit bester Farbwiedergabe und 5 Jahre Garantie für Farbkonstanz (MacAdam \leq 3) oder ECO für höchste Energieeffizienz bei optimalem Preis-Leistungsverhältnis und CRI>90. Farbtemperaturen 2700K, 3000K oder 4000K. Austauschbare Linsen-Reflektoroptiken mit sphärischer Facettenoptik. Ausstrahlwinkel: 10° (Spot), 20° (Medium), 35° (Flood) oder 50° (Wide Flood). Reflektorring in verschiedenen Farbausführungen erhältlich. Standardmäßig klare Abdeckung. Optional zusätzliche Filter oder Wabenraster.

EN LED spotlight for wall surface mounting. Direct-indirect light distribution. Driver integrated into luminaire body, optionally switchable or dimmable (DALI). Housing made of white, silver, black or champagne coated aluminum. Further surface options see Lightnet-Surface-Collection or RAL of your choice. LED Engine with XICATO ARTIST for highest light quality and colour rendering, including 5-year warranty for colour consistency (MacAdams 3) or ECO for highest energy efficiency with optimal price performance ratio and CRI> 90. Colour temperature 2700K, 3000K or 4000K. Replaceable lens reflector optic with spherical faceted optic. Beam angle: 10° (Spot), 20° (Medium), 35° (Flood) or 50° (Wide Flood). Reflector ring available in different colour versions. Standard clear cover. Optional additional filters or honeycomb louvre.

PW7AWE-9 27 FM-GK

Product Family	P: Midpoint
Type	W7: Direct-Indirect
Beam Angle	A: Spot 10°, B: Medium 20°, C: Flood 35°, D: Wide Flood 50°
Surface Finish	W: Snow White, V: Ivory White, S: Radiant Silver, B: Jet Black, H: Anodic Champagne
Control Gear	E: On/Off, L: DALI, H: Touch-Dim
Colour Rendering	9: CRI>90
Colour Temperature	27: 2700K, 30: 3000K, 40: 4000K
Led-Engine	F: Eco [Ra> 90], A: Artist [Ra> 97, Xicato]
Power	E: Low Power, M: Medium Power
Optic Ring	W: Snow White, V: Ivory White, S: Radiant Silver, B: Jet Black, H: Anodic Champagne, G: Satin Gold, K: Satin Copper
Cover	K: Clear Cover [Standard], P: Prismatic Lens, H: Honeycomb Louvre
On Request	Optic Removal Tool for clear cover



Spot 10° Led Engine Eco, Medium Power

Mounting Height	Illuminance [Lux] center/side	Beam Diameter
4 m	820/405	0.95 m
3 m	1457/721	0.72 m
2 m	3279/1622	0.48 m
1 m	13117/6488	0.24 m
1 m	13117/6488	0.24 m
2 m	3279/1622	0.48 m
3 m	1457/721	0.72 m
4 m	820/405	0.95 m

LED Engine	2700K	3000K	4000K
Eco Low Power [27W]	1840 lm	2020 lm	2160 lm
Eco Medium Power [39W]	2460 lm	2700 lm	2880 lm
Artist Low Power [26W]	1560 lm	1640 lm	1780 lm
Artist Medium Power [38W]	2080 lm	2180 lm	2380 lm

Medium 20° Led Engine Eco, Medium Power

Mounting Height	Illuminance [Lux] center/side	Beam Diameter
4 m	697/340	1.30 m
3 m	1240/604	0.96 m
2 m	2790/1359	0.64 m
1 m	11159/5436	0.32 m
1 m	11159/5436	0.32 m
2 m	2790/1359	0.64 m
3 m	1240/604	0.96 m
4 m	697/340	1.30 m

LED Engine	2700K	3000K	4000K
Eco Low Power [27W]	2400 lm	2640 lm	2820 lm
Eco Medium Power [39W]	3160 lm	3480 lm	3700 lm
Artist Low Power [26W]	2020 lm	2120 lm	2300 lm
Artist Medium Power [38W]	2660 lm	2780 lm	3020 lm

Flood 35° Led Engine Eco, Medium Power

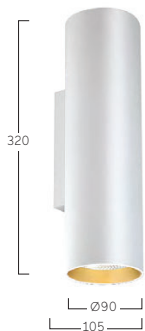
Mounting Height	Illuminance [Lux] center/side	Beam Diameter
4 m	248/108	2.50 m
3 m	441/191	1.90 m
2 m	991/430	1.30 m
1 m	3965/1721	0.63 m
1 m	3965/1721	0.63 m
2 m	991/430	1.30 m
3 m	441/191	1.90 m
4 m	248/108	2.50 m

LED Engine	2700K	3000K	4000K
Eco Low Power [27W]	2360 lm	2580 lm	2760 lm
Eco Medium Power [39W]	3060 lm	3360 lm	3580 lm
Artist Low Power [26W]	1980 lm	2080 lm	2260 lm
Artist Medium Power [38W]	2580 lm	2700 lm	2940 lm

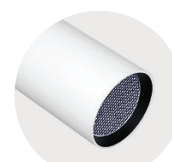
Wide Flood 50° Led Engine Eco, Medium Power

Mounting Height	Illuminance [Lux] center/side	Beam Diameter
4 m	163/64	3.80 m
3 m	289/114	2.80 m
2 m	651/256	1.90 m
1 m	2605/1022	0.94 m
1 m	2605/1022	0.94 m
2 m	651/256	1.90 m
3 m	289/114	2.80 m
4 m	163/64	3.80 m

LED Engine	2700K	3000K	4000K
Eco Low Power [27W]	2300 lm	2520 lm	2680 lm
Eco Medium Power [39W]	2880 lm	3160 lm	3360 lm
Artist Low Power [26W]	2000 lm	2100 lm	2280 lm
Artist Medium Power [38W]	2500 lm	2620 lm	2860 lm



Optic Removal Tool for clear cover



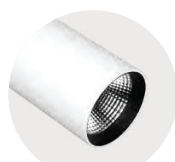
Honeycomb Louvre



Prismatic Lens



W Snow White
W Snow White



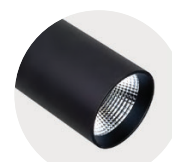
W Snow White
B Jet Black



W Snow White
G Satin Gold



S Radiant Silver
S Radiant Silver



B Jet Black
B Jet Black



B Jet Black
G Satin Gold