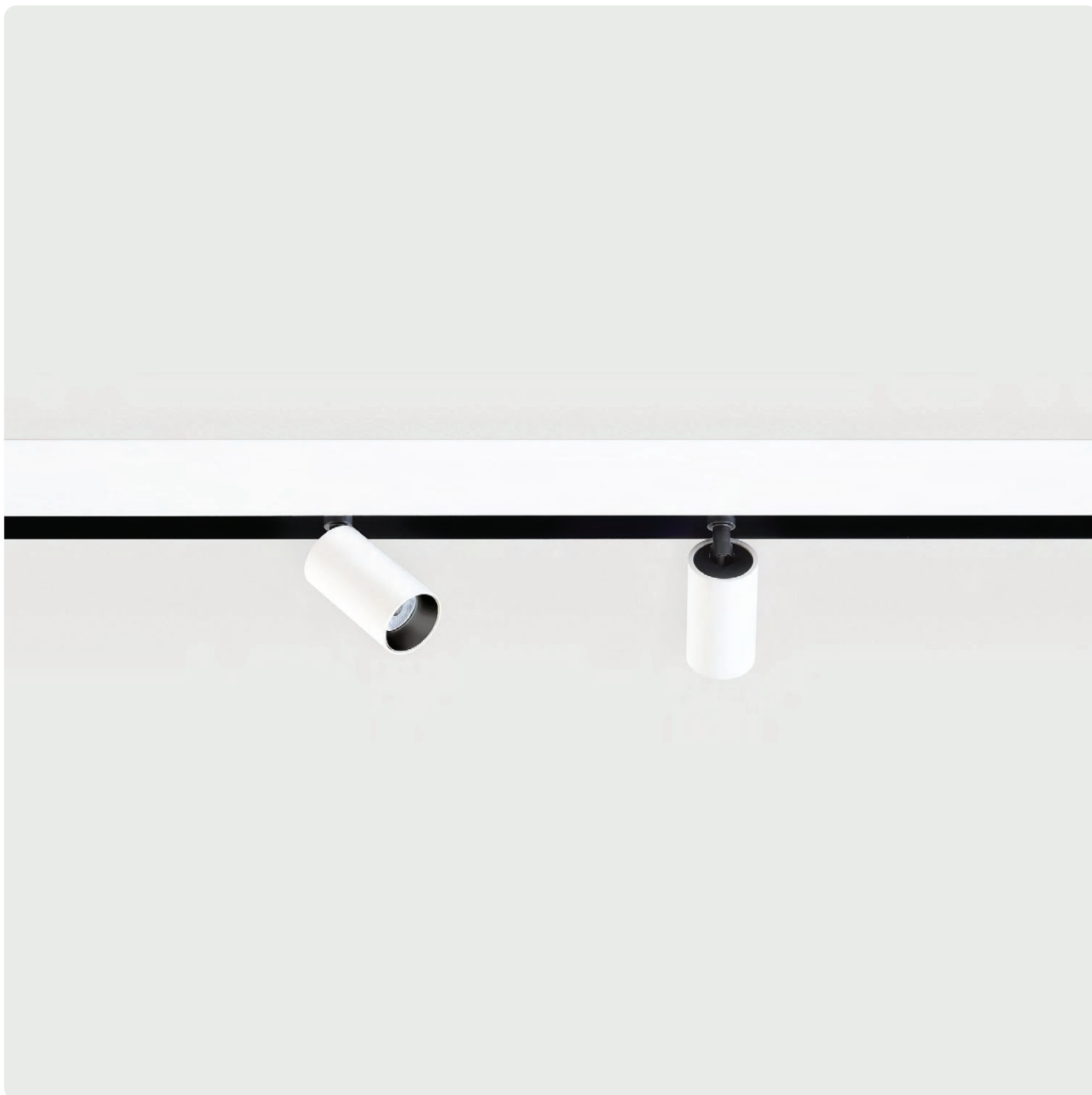


## Midpin C2/C3 | 48V Track



**DE** LED-Strahler für 48V-Stromschienen. Typ C2: 350° drehbar und 90° schwenkbar. Typ C3: Pendelausführung, direktstrahlend. Gehäuse aus Aluminium in weiß, silber, schwarz oder champagnerfarben lackiert. Weitere Oberflächenoptionen siehe Lightnet Surface Collection oder RAL nach Wahl. Adapter und Innenseite der Stromschienen immer schwarz. Farbtemperatur wahlweise 2700K, 3000K oder 4000K oder als Dim to Warm 3000K-1800K. Farbwiedergabe CRI>90. Binning initial ≤ MacAdam 3. Austauschbare Linsenoptik mit Ausstrahlwinkel 30° (Medium) oder 40° (Flood). Optikring in verschiedenen Farbausführungen erhältlich. Wahlweise einfach schaltbar oder stufenlos dimmbar (DALI). Separat bestellbar: 48V Stromschienen für Einbau-, Anbau- oder Pendelmontage mit externen 48V Betriebsgeräten oder Matric-Lichtlinien (System 40mm) mit integrierten 48V-Stromschienen und Betriebsgeräten. Maximale Systemflexibilität durch umfangreiches Standardsortiment an Winkerverbindern sowie Zuschnitt nach Maß.

**EN** LED spotlight for 48V tracks. Type C2: 350° rotation and 90° tilt. Type C3: Pendant version, direct only light distribution. Housing made of white, silver, black or champagne coated aluminum. For further colour finishes please see the Lightnet-Surface-Collection or select your RAL of choice. Adapter and inside of track are always black. Colour temperature available as 2700K, 3000K or 4000K or as Dim to Warm 3000K-1800K. Colour rendering CRI>90. Binning ≤ MacAdam 3. Changeable lens optics with beam angle 30° (medium) or 40° (flood). Optic ring available in different colour versions. Optionally switchable or dimmable (DALI). Separately orderable: 48V tracks for recessed, surface or pendant mounting with external 48V control gear or Matric light lines (System 40mm) with integrated 48V tracks and control gear. Maximum system flexibility due to extensive standard range of angle connectors and custom-made lengths.

**D C2 B B E - 9 27M - B**

Product Family	D: Midpin
Type	C2: Build-In Version for Low Voltage Magnetic Track, C3: Suspended Version for Low Voltage Magnetic Track
Lens Angle	B: Medium 30°, C: Flood 40°
Surface Finish	W: Snow White, V: Ivory White, S: Radiant Silver, B: Jet Black, H: Anodic Champagne
Control Gear	E: On/Off, L: DALI
Colour Rendering	9: CRI>90
Colour Temperature	27: 2700K, 30: 3000K, 35: 3500K, 40: 4000K, DW: Dim to Warm 1800K-3000K [DALI only]
Power	M: Medium Power
Optic Ring	W: Snow White, V: Ivory White, A: Satin Silver, B: Jet Black, H: Anodic Champagne, G: Satin Gold, K: Satin Copper



**Medium 30° Led Engine Eco, Medium Power**

Mounting Height	Illuminance [Lux] center/side	Beam Diameter
1 m	2079/929	0.57 m
2 m	520/232	1.10 m
3 m	231/103	1.70 m
4 m	130/58	2.30 m

LED Engine	2700K	3000K	3500K	4000K
11W	610 lm	710 lm	750 lm	750 lm

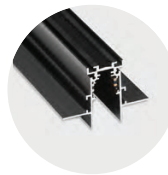
**Flood 40° Led Engine Eco, Medium Power**

Mounting Height	Illuminance [Lux] center/side	Beam Diameter
1 m	1454/591	0.77 m
2 m	364/148	1.50 m
3 m	162/66	2.30 m
4 m	91/37	3.10 m

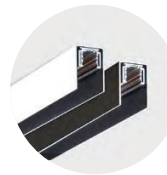
  

LED Engine	2700K	3000K	3500K	4000K
11W	620 lm	730 lm	770 lm	770 lm

**Midpin C2 Build-In Version**



**Track Recessed, 2000mm:**  
X-LV-TRACK-L2000-LB [BLACK]



**Track Surface, length on request:**  
X-LV-TRACK-Lxxx-A-B [BLACK]  
X-LV-TRACK-Lxxx-A-W [WHITE]



**Straight Mechanical Connector:**  
X-LV-CONNECTOR-B [BLACK]



**Straight Electrical Connector:**  
X-LV-SCOUPLER-B [BLACK]

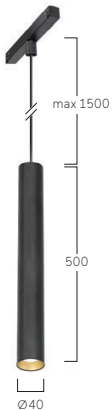


**Feed:**  
X-LV-FEED-B [BLACK]



**Corner Connector:**  
X-LV-LCOUPLER-B [BLACK]

**Midpin C3 Suspended Version**



**End Cap:**  
X-LV-CAP-L-B [RECESSED BLACK]



**Installation Set for Track Recessed:**  
X-LV-SUSP-1,5M-B [1,5M BLACK]  
X-LV-SUSP-4M-B [4M BLACK]



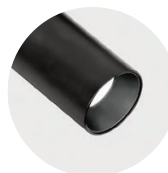
**Converter:**  
X-LV-CONVERTER-70W-E [70W, ON/OFF]  
X-LV-CONVERTER-100W-E [100W, ON/OFF]  
X-LV-CONVERTER-150W-E [150W, ON/OFF]  
X-LV-CONVERTER-70W-L [70W, DALI]  
X-LV-CONVERTER-100W-L [100W, DALI]  
X-LV-CONVERTER-150W-L [150W, DALI]



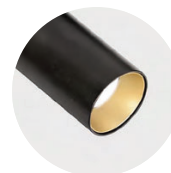
**B** Jet Black  
**W** Snow White



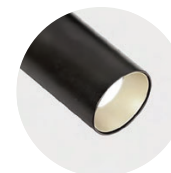
**B** Jet Black  
**A** Satin Silver



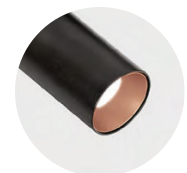
**B** Jet Black  
**B** Jet Black



**B** Jet Black  
**G** Satin Gold



**B** Jet Black  
**H** Anodic Champagne



**B** Jet Black  
**K** Satin Copper