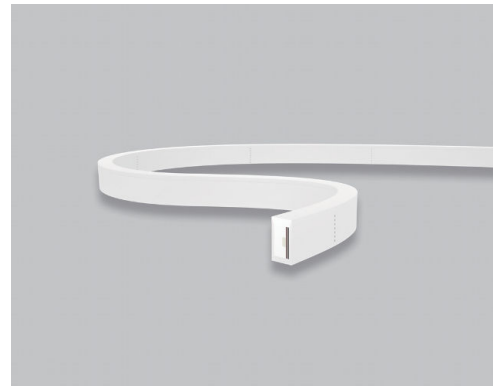


UDON 15



F3-U15

Physical

Material Silicone
with Silicone opal diffuser

Mounting type
Surface mounted

Power Feeds
Multiple types depending on application

Electrical

Voltage and Current
24VDC

Control Non-dimmable,
Triac, DALI

Max Run Per Power Feed Mono colour
10m single power feed
20m dual power feed

Max Run Per Power Feed RGBW
8m single power feed
16m dual power feed

Optical

Beam angle 120°

CCT 2200, 2700, 3000,
4000, 5000, Green,
Blue, Yellow, Pink, RGBW

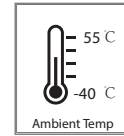
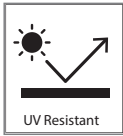
CRI 80, 90 (on request)

Certification

Warranty 5 years

Category IP68 From Factory
IP67 Field Fitted

Features



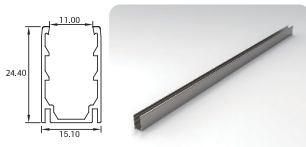
Product Specification

SKU	Wattage (per m)	Lumen Output (per m) (22K, 27K, 3K, 4K, 5K, G, B, Y, P) (R/G/B/W)(27K, 3K, 4K, 5K)	Cuttable	Minimum Bend Diameter	Dimensions WxH mm	Technical Drawing
F3-U15	12 W	300/ 300/ 320/ 340/ 360 190/ 35/ 260/ 150 lm	100 mm	100 mm	11.5 x 21	
F3-U15 RGBW	17 W	35/ 110/ 29 140/ 140/ 160/ 170 lm	100 mm	100 mm	11.5 x 21	

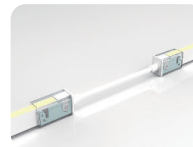
SKU builder

Brand	Colour	CRI	CCT
F3-U15 - FluxLED 3 Udon 15	W W = White	X 8 = 80CRI 9 = 90CRI	XXXXXX 22 = 2200K 27 = 2700K 3 = 3000K 4 = 4000K 5 = 5000K G = Green B = Blue LY = Yellow P = Pink RGBW27 = RGBW (2700K) RGBW3 = RGBW (3000K) RGBW4 = RGBW (4000K) RGBW5 = RGBW (5000K)
			Example: F3-U15-W8RGBW3

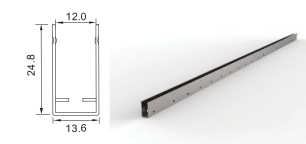
Accessories



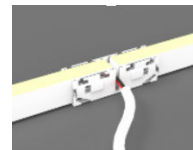
U15 Aluminium Mounting Channel (2m length)
SKU: F3-U15A1



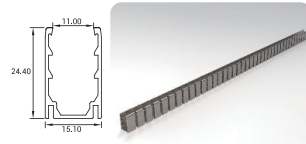
U15 IP67 Mono Colour Connector Splice (Strip Right to Left)
SKU: F3-U15A9



U15 Stainless Steel Mounting Channel (1m length)
SKU: F3-U15A2

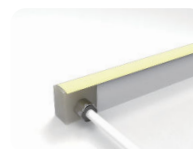


U15 Mono Colour Connector Splice Middle
SKU: F3-U15A10

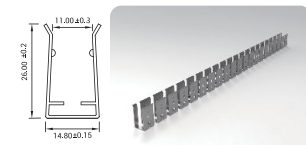


U15 Aluminium Flexible Mounting Channel (1m length)
SKU: F3-U15A3

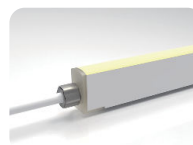
From Factory



U15 IP68 Moulded Right/ Left Side (600mm with End Cap)
SKU: F3-U15A11/ F3-U15A12

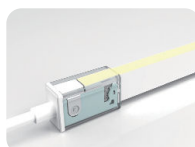


U15 Stainless Steel Flexible Mounting Channel (1m length)
SKU: F3-U15A4

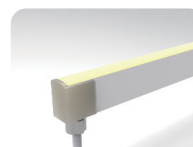


U15 IP68 Moulded Direct (600mm with End Cap)
SKU: F3-U15A13

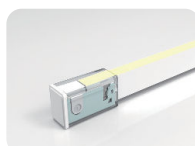
Field Fitted



U15 IP67 Mono Colour Connector Kit (Strip Right/ Left 600mm)
SKU: F3-U15A5/ F3-U15A6



U15 IP68 Moulded Bottom (600mm with End Cap)
SKU: F3-U15A14



U15 IP67 Mono Colour Connector End cap Kit (Strip Right/ Left)
SKU: F3-U15A7/ F3-U15A8