

# Base Canopy



Model: F3-BC75-WXX120XX



Model: F3-BC75-WXX90XX

## Physical

**Material** Aluminium,  
Powder coat  
**Optics** Tempered Glass  
**Finish** White RAL9016,  
**Mounting type**  
Surface mounted

## Electrical

**Voltage**  
AC 220-240, 50/60 Hz  
**Control** DALI, Non Dim

## Optical

**Beam angle** 90°,120°  
**CCT** 3000K, 4000K, 5000K  
**CRI** 70, 80  
**Efficiency** 155lm/W  
**SDCM** 3

## Certification

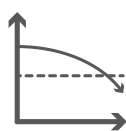
**Warranty** 10 Years  
**Category** IP66, IK08  
**Lifetime** L80>60,000Hrs  
AS/NZS 60598.2.1  
AS/NZS 60598.1



IP66



IK08



Extended Lifespans



High efficiency

## Product Specification

SKU	Wattage	Lumen Output (120° / 80CRI / 4000K)	Efficiency	Dimensions HxWxL mm	Technical Drawing
F3-BC75	75W	11622lm	155lm/W	65 x 369 x 368	
F3-BC100	100W	15521lm	155lm/W	65 x 369 x 368	
F3-BC120	120W	18668lm	155lm/W	65 x 369 x 368	

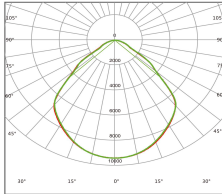
## SKU builder

Brand	Wattage	Colour	CRI	CCT	Beam angle	Control
F3-BC FluxLED Base Canopy	XXX - 75 = 75W 100 = 100W 120 = 120W	W W = White	X 7 = 70CRI 8 = 80CRI	X 3 = 3000K 4 = 4000K 5 = 5000K	XXX 90 = 90D 120 = 120D	X N = Non-dim DA = DALI 2

Example: F3-BC100-W74120DA

## Beam angle options

Lumen outputs @ 4000K, 80CRI

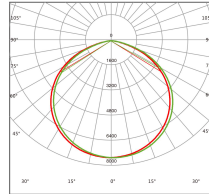


**90= 90°**

75W = 11075 Lm

100W = 14768 Lm

120W = 17672 Lm



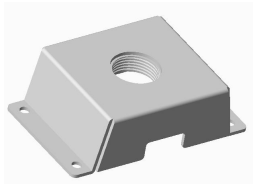
**120= 120°**

75W = 11652 Lm

100W = 15521 Lm

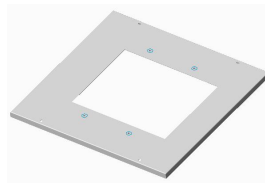
120W = 18668 Lm

## Accessories



**3/4 Conduit Mount**

SKU: F3-BCA2



**Surface Mount Adapter**

SKU: F3-BCA1

## Product Dimensions

