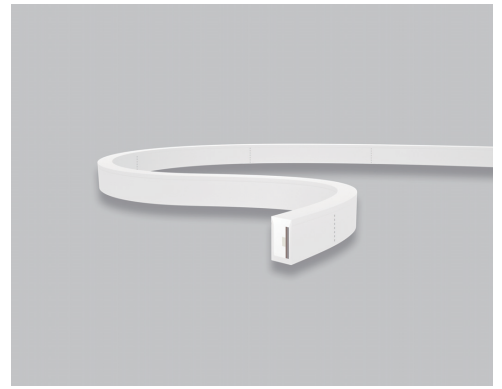


# UDON 15



F3-U15

## Physical

**Material** Silicone  
with Silicone opal diffuser

**Mounting type**  
Surface mounted

**Power Feeds**  
Multiple types depending on application

## Electrical

**Voltage and Current**  
24VDC

**Control** Non-dimmable,  
Triac, DALI

**Max Run Per Power Feed Mono colour**  
10m single power feed  
20m dual power feed

**Max Run Per Power Feed RGBW**  
8m single power feed  
16m dual power feed

## Optical

**Beam angle** 120°

**CCT** 2200, 2700, 3000,  
4000, 5000, Green,  
Blue, Yellow, Pink, RGBW

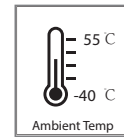
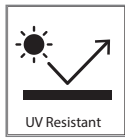
**CRI** 80, 90 (on request)

## Certification

**Warranty** 5 years

**Category** IP68 From Factory  
IP67 Field Fitted

## Features



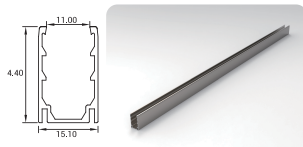
## Product Specification

SKU	Wattage (per m)	Lumen Output (per m) (22K, 27K, 3K, 4K, 5K, G, B, Y, P) (R/G/B/W)(27K, 3K, 4K, 5K)	Cuttable	Minimum Bend Diameter	Dimensions WxH mm	Technical Drawing
F3-U15	12 W	300/ 300/ 320/ 340/ 360 190/ 35/ 260/ 150 lm	100 mm	100 mm	11.5 x 21	
F3-U15 RGBW	17 W	35/ 110/ 29 140/ 140/ 160/ 170 lm	100 mm	100 mm	11.5 x 21	

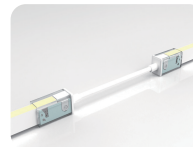
## SKU builder

Brand	Colour	CRI	CCT
<b>F3-U15</b> - FluxLED 3 Udon 15	<b>W</b> W = White	<b>X</b> 8 = 80CRI 9 = 90CRI	XXXXXX
			22 = 2200K 27 = 2700K 3 = 3000K 4 = 4000K 5 = 5000K G = Green B = Blue LY = Yellow P = Pink RGBW27 = RGBW (2700K) RGBW3 = RGBW (3000K) RGBW4 = RGBW (4000K) RGBW5 = RGBW (5000K)
Example: F3-U15-W8RGBW3			

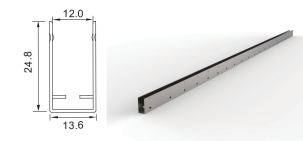
## Accessories



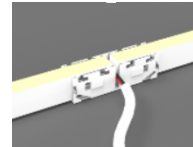
**U15 Aluminium Mounting Channel (2m length)**  
SKU: F3-U15A1



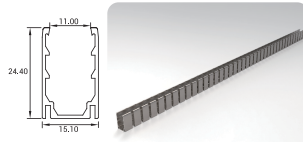
**U15 IP67 Mono Colour Connector Splice (Strip Right to Left)**  
SKU: F3-U15A9



**U15 Stainless Steel Mounting Channel (1m length)**  
SKU: F3-U15A2

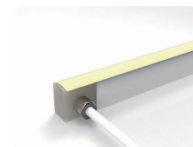


**U15 Mono Colour Connector Splice Middle**  
SKU: F3-U15A10

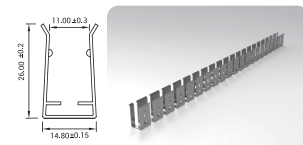


**U15 Aluminium Flexible Mounting Channel (1m length)**  
SKU: F3-U15A3

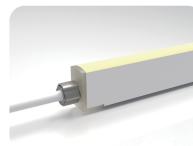
### From Factory



**U15 IP68 Moulded Right/ Left Side (600mm with End Cap)**  
SKU: F3-U15A11/ F3-U15A12

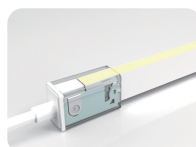


**U15 Stainless Steel Flexible Mounting Channel (1m length)**  
SKU: F3-U15A4

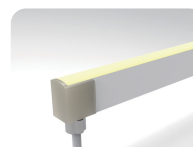


**U15 IP68 Moulded Direct (600mm with End Cap)**  
SKU: F3-U15A13

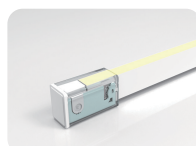
### Field Fitted



**U15 IP67 Mono Colour Connector Kit (Strip Right/ Left 600mm)**  
SKU: F3-U15A5/ F3-U15A6



**U15 IP68 Moulded Bottom (600mm with End Cap)**  
SKU: F3-U15A14



**U15 IP67 Mono Colour Connector End cap Kit (Strip Right/ Left)**  
SKU: F3-U15A7/ F3-U15A8