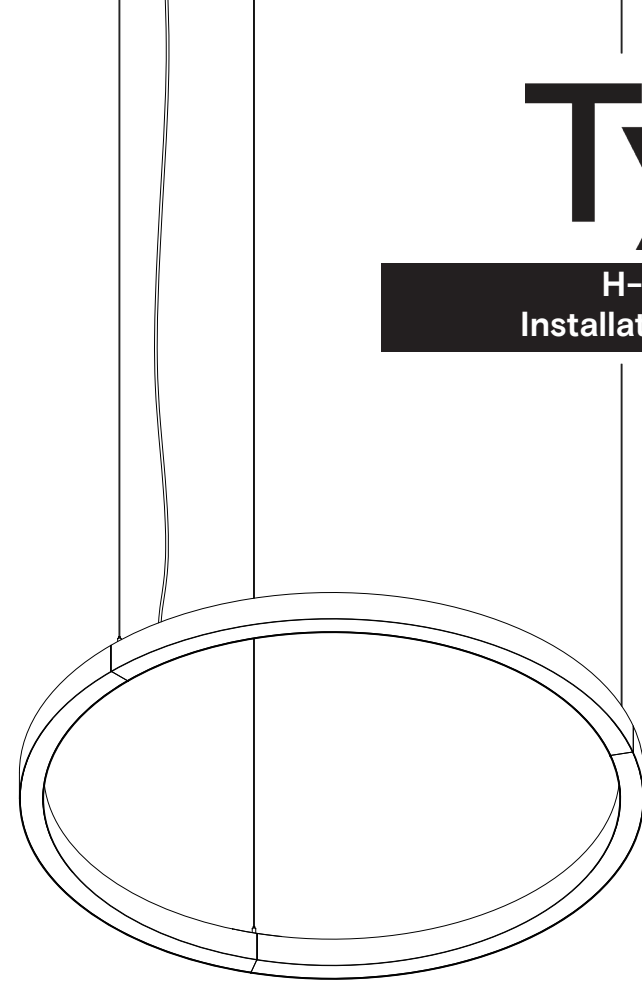
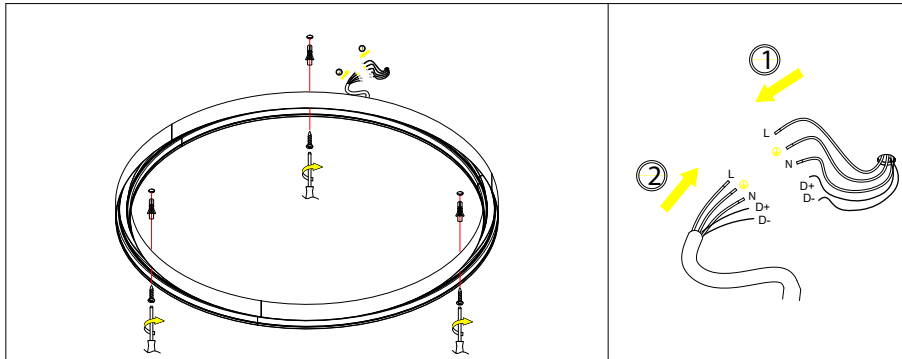


Surface mounting



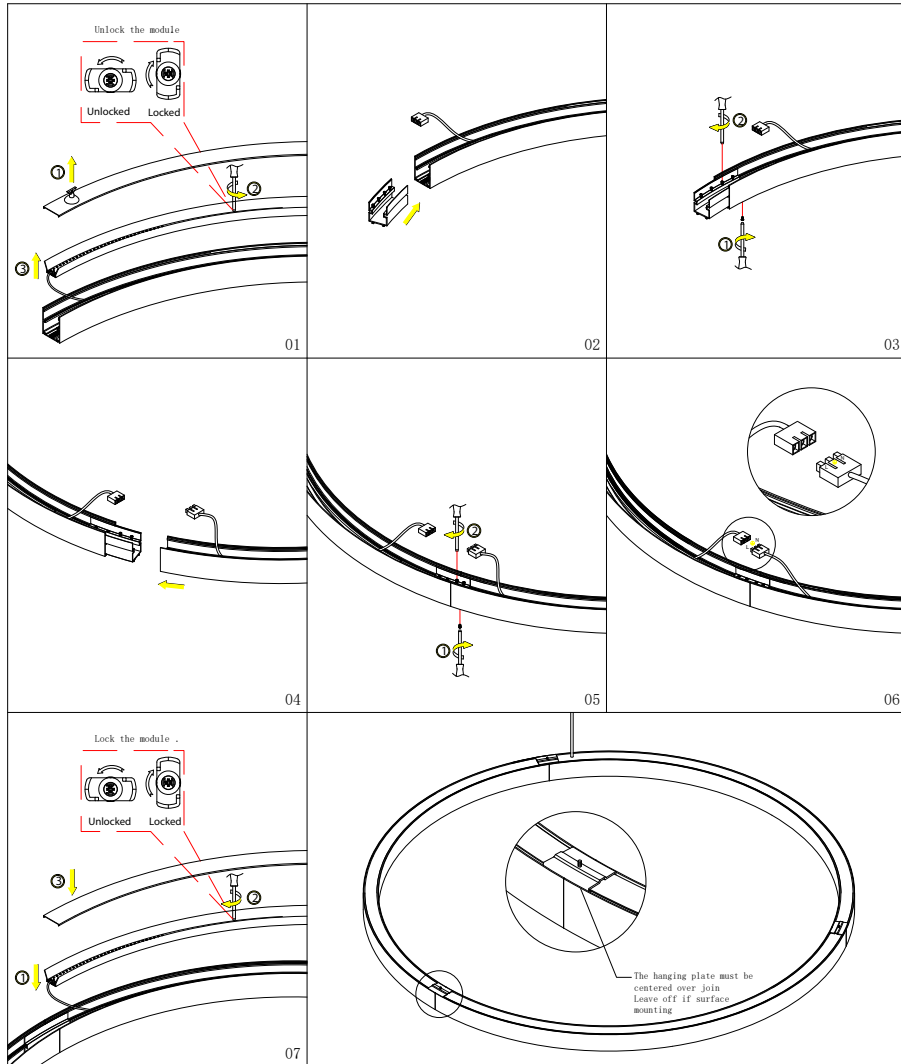
Safety Instruction:

1. Turn off power before installation or before doing any maintenance work.
2. Do not install any luminaire near a heat source.
3. For Indoor use.
4. Do not exceed the nominal supply voltage or amperage ratings.
5. All wiring and installation of this luminaire must adhere to local and national wiring rules eg AS/NZS 3000:2007 Amendment 2:2012

Electrical Installation

6. Take care not to pull any electrical wires during unpacking as this may damage the connection.
7. Lay out all the components on a smooth surface and make sure there are no components missing before assembling.
8. To avoid injury or damage to the fitting, please ensure that power leads and screws are secure before connecting the power.
9. Please keep instructions for future reference.

L	→	→	→	→	Dali Dimming
0	→	→	→	→	
N	→	→	→	→	
0	→	→	→	→	
L	→	→	→	→	0-10v Dimming
0	→	→	→	→	
N	→	→	→	→	
0	→	→	→	→	
L	→	→	→	→	Non Dimming
0	→	→	→	→	
N	→	→	→	→	



Suspension mounting

