

Frontier Area light



Model: F3-FA

Physical

Material Aluminium w
Corrosion Resistant
Powder Coat/
Tempered Glass

Trim finish Black RAL 9017,
Grey RAL 9006

Mounting type
Pole top mount,
Side entry mount

Electrical

Voltage
AC 220-240, 50/60 Hz

Control DALI,
3 Pin NEMA + Photocell
5 Pin NEMA
7 Pin NEMA

Optical

Beam angle 11 options

CCT 3000K, 4000K,
5000K

CRI 70, 80, 90

UGR >19

Efficiency 138-147Lm/W

SDCM 3

Certification

Warranty 5 Years Standard
8 Years Extended

Category IP66, IK09

Lifetime L80 >93,000 Hrs

Salt Spray 3000 Hrs testing

AS/NZS 60598.2.5

AS/NZS 60598.1

Features



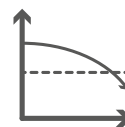
IP66



IK09



Salt Spray testing



CLO & Extended
Lifespans



Integrated
NEMA 3,5,7 pin options

Product Specification

SKU	Wattage	Lumen Output (80CRI / 4000K)	Weight	Dimensions HxWxL mm	Drawing
F3-FA40	40W	5551-5913Lm	4.7Kgs	236 x 220 x 454	
F3-FA100	100W	13879-14783Lm	5.9Kgs	238 x 220 x 554	
F3-FA150	150W	20818-29567Lm	7.2Kgs	239 x 270 x 609	
F3-FA200	200W	27758-29567Lm	8.5Kgs	241 x 285 x 679	

Mounting options



Pole top mount



Side entry mount

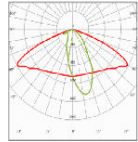
SKU builder

Brand	Wattage	Colour	CRI	CCT	Beam angle	Control	Accessories
F3-FA FluxLED Frontier Area	XXX - 40 = 50W 100 = 100W 150 = 150W 200 = 200W	X B = Black G = Grey	X 7 = 70CRI 8 = 80CRI 9 = 90CRI	XX 3 = 3000K 4 = 4000K 5 = 5000K	XXX 1S = Type I short 2S = Type II short 2SB = Type II short B 2SC = Type II short C 2SD = Type II short D 2M = Type II medium 3S = Type III short 3M = Type III medium 3MB = Type III medium B 4S = Type IV short 5S = Type V short	XX DA = DALI 2 3PH = 3 Pin NEMA + photocell 5NE = 5 Pin NEMA 7NE = 7 Pin NEMA	XXXXX FAA1 = 34mm Spigot FAA2 = 42mm Spigot FAA3 = 60mm Spigot FAA4 = 76mm Spigot FAA5 = Wall mount adapter for 60mm FAA6 = 2X adapter for Ø60mm pole FAA7 = Adapter 100mm square pole FAA8 = 2X adapter for 100mm square pole FAA9 = 2X adapter for Ø76mm pole FAA10 = Adapter for Ø90mm pole FAA11 = Corner adapter FAA12 = L adapter for Ø60mm pole

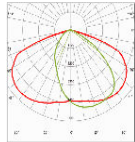
Example: F3-FA150B842SBDA-FAA3

Beam angle options

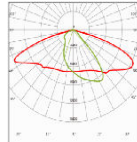
Lumen outputs @ 4000K, 80CRI



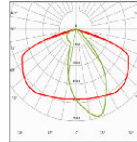
1S =
TYPE I Short
40 = 5863 Lm
100 = 14659 Lm
150 = 21988 Lm
200 = 29318 Lm



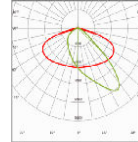
2S =
TYPE II short
40 = 5891 Lm
100 = 14729 Lm
150 = 22094 Lm
200 = 29459 Lm



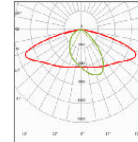
2SB =
TYPE II short B
40 = 5808 Lm
100 = 14521 Lm
150 = 21781 Lm
200 = 29042 Lm



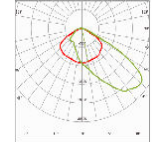
2SC =
TYPE II short C
40 = 5758 Lm
100 = 14396 Lm
150 = 21595 Lm
200 = 28793 Lm



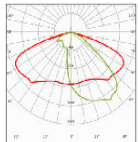
2SD =
TYPE II short D
40 = 5551 Lm
100 = 13879 Lm
150 = 20818 Lm
200 = 27758 Lm



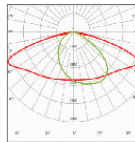
2M =
TYPE II medium
40 = 5698 Lm
100 = 14246 Lm
150 = 21369 Lm
200 = 28492 Lm



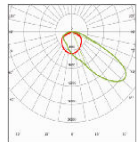
3S =
TYPE III short
40 = 5865 Lm
100 = 14663 Lm
150 = 21994 Lm
200 = 29326 Lm



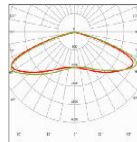
3M =
TYPE III medium
40 = 5903 Lm
100 = 14758 Lm
150 = 22138 Lm
200 = 29517 Lm



3MB =
TYPE III medium B
40 = 5598 Lm
100 = 13995 Lm
150 = 20992 Lm
200 = 27990 Lm

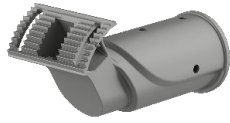


4S =
TYPE IV short
40 = 5675 Lm
100 = 14188 Lm
150 = 21282 Lm
200 = 28376 Lm

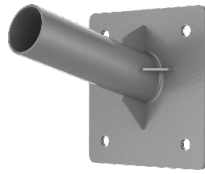


5S =
TYPE V short
40 = 5913Lm
100 = 14783 Lm
150 = 22175 Lm
200 = 29567 Lm

Accessories



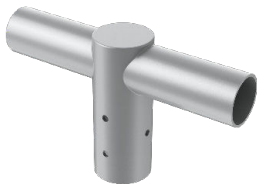
FAA1 = 34mm Spigot
 FAA2 = 42mm Spigot
 FAA3 = 60mm Spigot
 FAA4 = 76mm Spigot



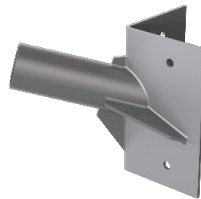
FAA5 = Wall Mount for 60mm



FAA12 = L adapter for
 Ø60mm pole

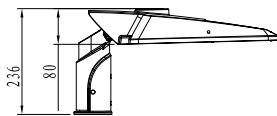
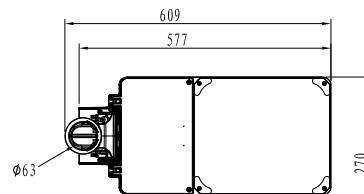
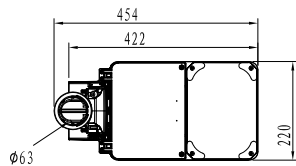


FAA6 = 2X adapter for Ø60mm pole
 FAA8 = 2X adapter for Ø76mm pole

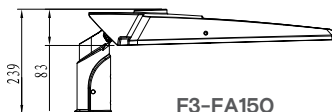


FAA11 = Corner adapter

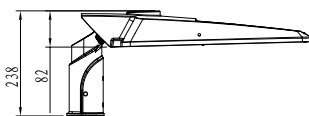
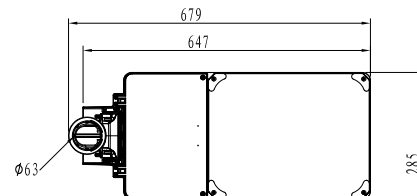
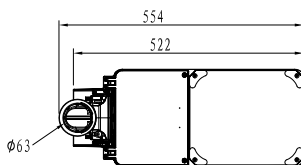
Product Dimensions



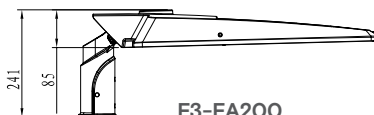
F3-FA40



F3-FA150



F3-FA100



F3-FA200