

Installation Instructions Surface Wall light

Regulations

To ensure correct functionality and safety please read instructions carefully before using this product. This luminaire complies with AS/NZS 60598.1, AS/NZS 60598.2.5

All wiring and installation of this luminaire must adhere to local and national wiring rules eg AS/NZS 3000:2007 Amendment 2:2012 Electrical Installation

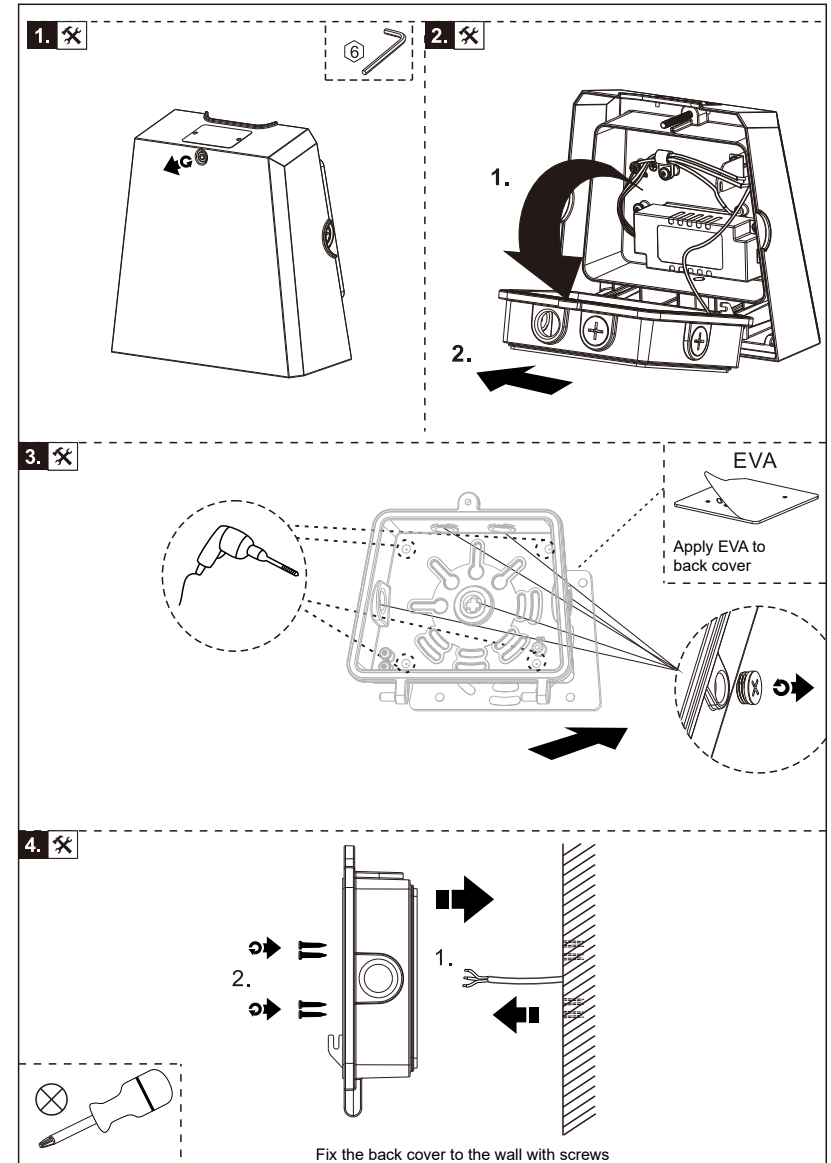
TIPS

1. Always ensure power is off and the fitting has cooled down before performing any maintenance or adjustment to the fitting
2. To avoid injury or damage to the fitting, ensure that power leads and screws are secure before connecting the power
3. Handle the fitting with care to avoid damage
4. Find a suitable location away from liquids or hazards
5. To clean, wipe with a damp clean cloth. Never soak the fitting with water.

Technical specifications

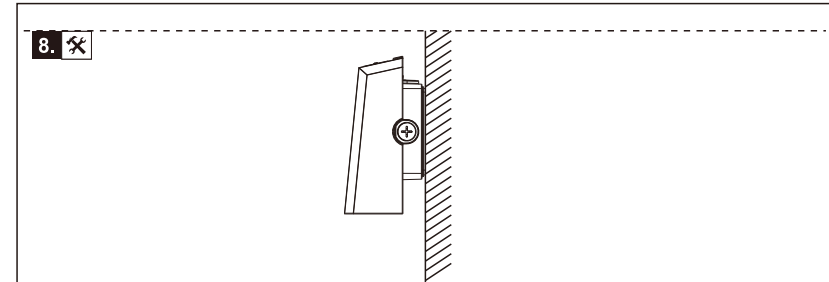
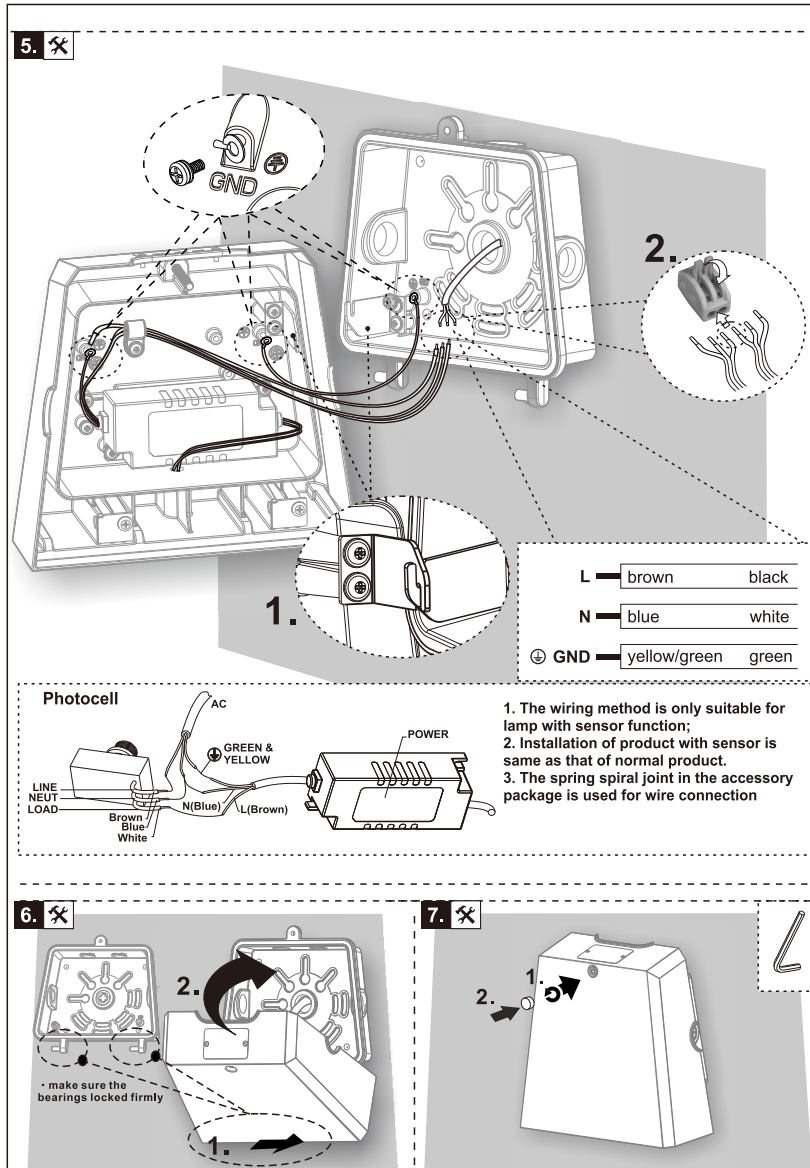
Product Specifications		30W	40W	70W
Input Voltage	Normal	AC100-240V		
	Photocell	AC200-240V		
Power Frequency		50 / 60Hz		
Outlook Dimensions		196 x 96 x 186mm	282 x 125 x 205mm	
Luminaire Net Weight		1.42±0.2kg	2.76±0.2kg	
Working Temperature		-30°C to +45°C		
Storing Temperature		-40°C to +70°C		

Installation steps



Installation Instructions Surface Wall light

Installation steps



1. The wiring method is only suitable for lamp with sensor function;
2. Installation of product with sensor is same as that of normal product.
3. The spring spiral joint in the accessory package is used for wire connection