

Installation Instructions Endura Vapour Proof light

Regulations

To ensure correct functionality and safety please read instructions carefully before using this product. This luminaire complies with AS/NZS 60598.1, AS/NZS 60598.2.5

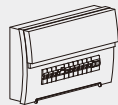
All wiring and installation of this luminaire must adhere to local and national wiring rules eg AS/NZS 3000:2007 Amendment 2:2012 Electrical Installation

TIPS

1. Always ensure power is off and the fitting has cooled down before performing any maintenance or adjustment to the fitting
2. To avoid injury or damage to the fitting, ensure that power leads and screws are secure before connecting the power
3. Handle the fitting with care to avoid damage
4. Find a suitable location away from liquids or hazards
5. To clean, wipe with a damp clean cloth. Never soak the fitting with water.

WARNING

1. Switch off before installation.
2. Switch on only after complete installation and examination of the circuit.
3. Professional electrician for installation and maintenance only.



Turn Off
Power Supply

Technical specifications

		20W	33W	45W
Linkable luminaires Qty	200-240V	52	42	35

Suspended Installation steps

Step1

Drill holes, apply anchors to ceiling and fix mount.

Step2

Thread steel wire through clips and fix to mounts

Step3

Thread AC wire through waterproof joint. Connect wires according to diagram

Step4

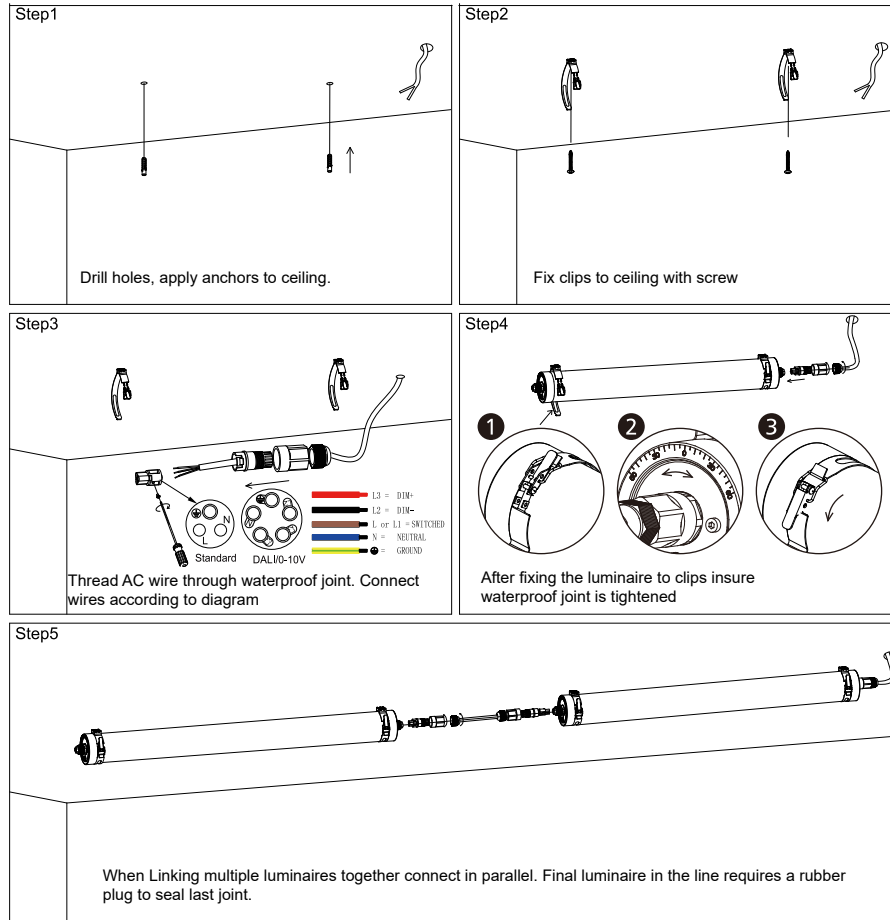
After fixing the luminaire to clips insure waterproof joint is tightened

Step5

When Linking multiple luminaires together connect in parallel. Final luminaire in the line requires a rubber plug to seal last joint.

Installation Instructions Endura vapor proof light

Surface mounted Installation steps



Warning:

Input wire diameter $\geq 0,75\text{mm}^2$;
Product modification and improper installation are not valid for warranty!

The luminaires with non-user replaceable light sources



"caution, electric shock risk"