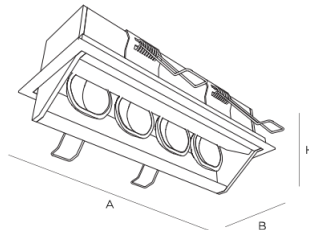
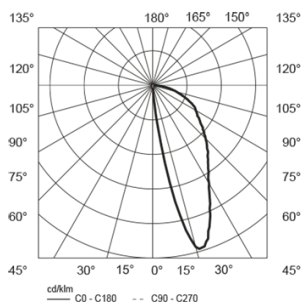


MICRO WW 4 /840 HE



OC ECG **	Socket	A/B/H[mm]	a/b/h[mm]	Weight [kg]	Flux [lm]*	Total power [W]
1517111XY	LED	194/70/126	188/62/140	0.80	925	9.0



CCT

4000 K

CRI

>80

LED Service life

50000h L80B10 /SCDM3

GENERAL Wall washer with unique vertical light distribution allows uniform illumination of wall from its top to the bottom.

OPTICS Wall washing component is based on reflectors with complex- surface micro- facet technology. The reflectors ensure high uniformity in lighting distribution on vertical plane.

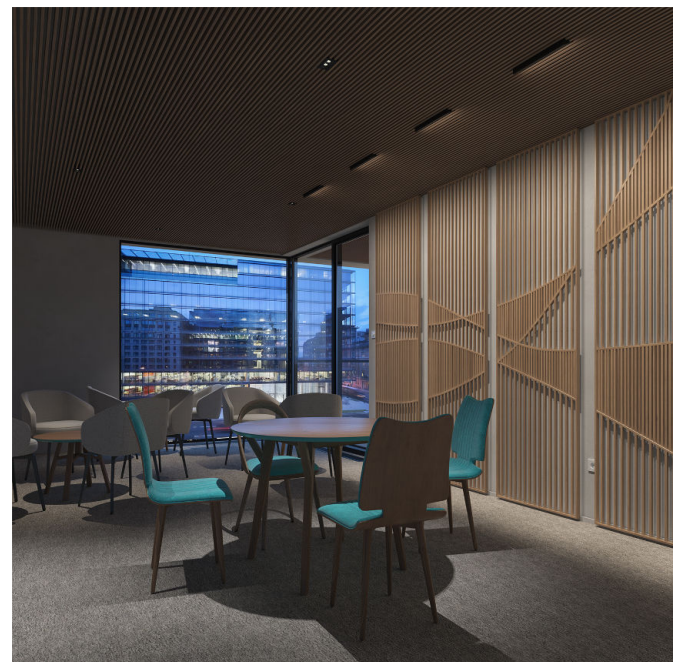
LIGHTING MANAGEMENT The choice of appropriate control gear enables integration into lighting management systems.

HOUSING Housing is made of aluminium, with visible frame. Finish: epoxy polyester powder coating. Fine structured texture. Standard trim colours: white, gray, black. Other colours available upon request.

APPLICATION Applicable to all types of suspended ceilings that can be cut through.

FEATURE Ideal longitudinal anti-glare. No light pollution, full cut off.

ADDITIONAL Dynamic White and other light colour temperatures available upon request.



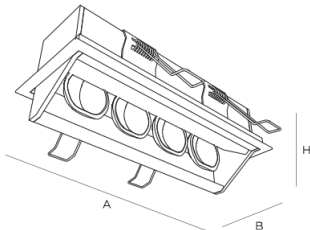
** Replace XY with the color code when ordering (e.g. 11 white, 21 grey, 31 black).





** Add '-5' on ordering code for DALI control gear or

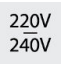


** Add '-4' on ordering code for 1-10V control gear

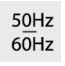


* Luminaire luminous flux and connected electrical load - initial tolerance of ± 10 % (at ambient temperature of 25°C).


MICRO WW 4 /840 HO



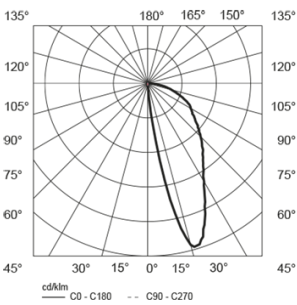








OC ECG **	Socket	A/B/H[mm]	a/b/h[mm]	Weight [kg]	Flux [lm]*	Total power [W]
1517114XY	LED	194/70/126	188/62/140	0.80	1496	15.0



CCT

4000 K

CRI

>80

LED Service life

50000h L80B10 /SCDM3

- GENERAL** Wall washer with unique vertical light distribution allows uniform illumination of wall from its top to the bottom.
- OPTICS** Wall washing component is based on reflectors with complex- surface micro- facet technology. The reflectors ensure high uniformity in lighting distribution on vertical plane.
- LIGHTING MANAGEMENT** The choice of appropriate control gear enables integration into lighting management systems.
- HOUSING** Housing is made of aluminium, with visible frame. Finish: epoxy polyester powder coating. Fine structured texture. Standard trim colours: white, gray, black. Other colours available upon request.
- APPLICATION** Applicable to all types of suspended ceilings that can be cut through.
- FEATURE** Ideal longitudinal anti-glare. No light pollution, full cut off.
- ADDITIONAL** Dynamic White and other light colour temperatures available upon request.



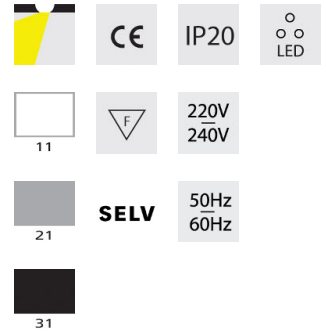
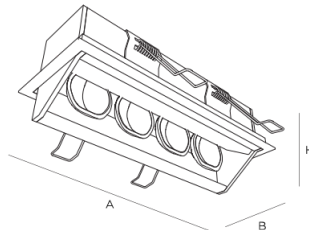
** Replace XY with the color code when ordering (e.g. 11 white, 21 grey, 31 black).

** Add '-5' on ordering code for DALI control gear or

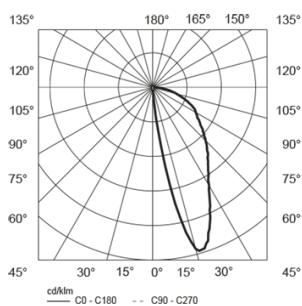
** Add '-4' on ordering code for 1-10V control gear

* Luminaire luminous flux and connected electrical load - initial tolerance of ±10 % (at ambient temperature of 25°C).

MICRO WW 8 /840 HE



OC ECG **	Socket	A/B/H[mm]	a/b/h[mm]	Weight [kg]	Flux [lm]*	Total power [W]
1517112XY	LED	354/70/126	348/62/140	1.30	1850	17.0



CCT
4000 K
CRI
>80
LED Service life
50000h L80B10 /SCDM3

GENERAL Wall washer with unique vertical light distribution allows uniform illumination of wall from its top to the bottom.

OPTICS Wall washing component is based on reflectors with complex- surface micro- facet technology. The reflectors ensure high uniformity in lighting distribution on vertical plane.

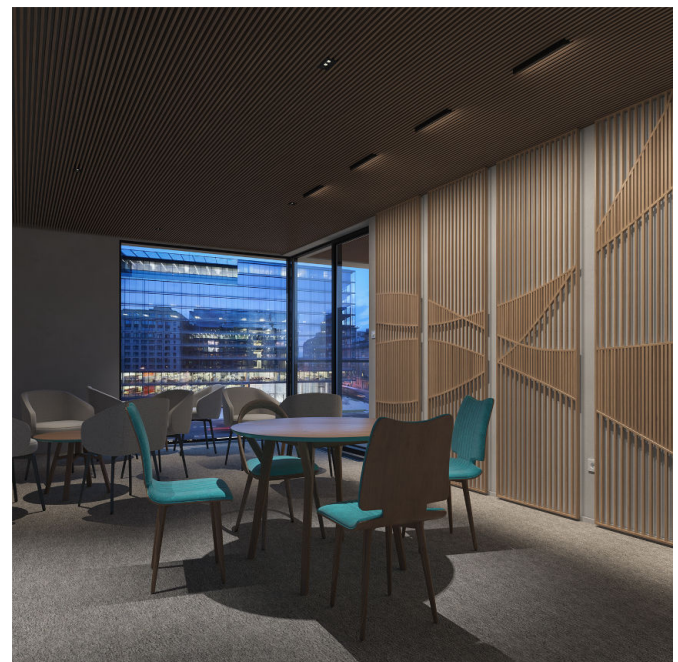
LIGHTING MANAGEMENT The choice of appropriate control gear enables integration into lighting management systems.

HOUSING Housing is made of aluminium, with visible frame. Finish: epoxy polyester powder coating. Fine structured texture. Standard trim colours: white, gray, black. Other colours available upon request.

APPLICATION Applicable to all types of suspended ceilings that can be cut through.

FEATURE Ideal longitudinal anti-glare. No light pollution, full cut off.

ADDITIONAL Dynamic White and other light colour temperatures available upon request.



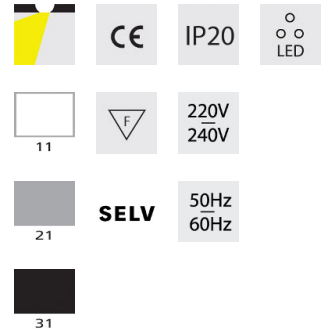
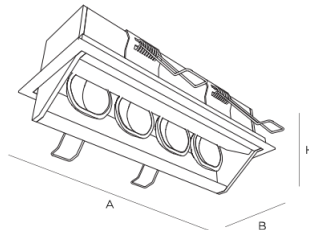
** Replace XY with the color code when ordering (e.g. 11 white, 21 grey, 31 black).

** Add '-5' on ordering code for DALI control gear or

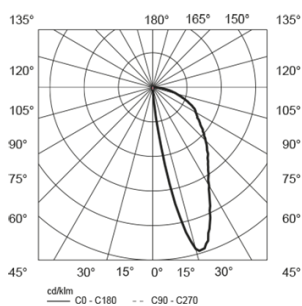
** Add '-4' on ordering code for 1-10V control gear

* Luminaire luminous flux and connected electrical load - initial tolerance of ± 10 % (at ambient temperature of 25°C).

MICRO WW 8 /840 HO



OC ECG **	Socket	A/B/H[mm]	a/b/h[mm]	Weight [kg]	Flux [lm]*	Total power [W]
1517115XY	LED	354/70/126	348/62/140	1.30	2992	30.0



CCT
4000 K
CRI
>80
LED Service life
50000h L80B10 /SCDM3

GENERAL Wall washer with unique vertical light distribution allows uniform illumination of wall from its top to the bottom.

OPTICS Wall washing component is based on reflectors with complex- surface micro- facet technology. The reflectors ensure high uniformity in lighting distribution on vertical plane.

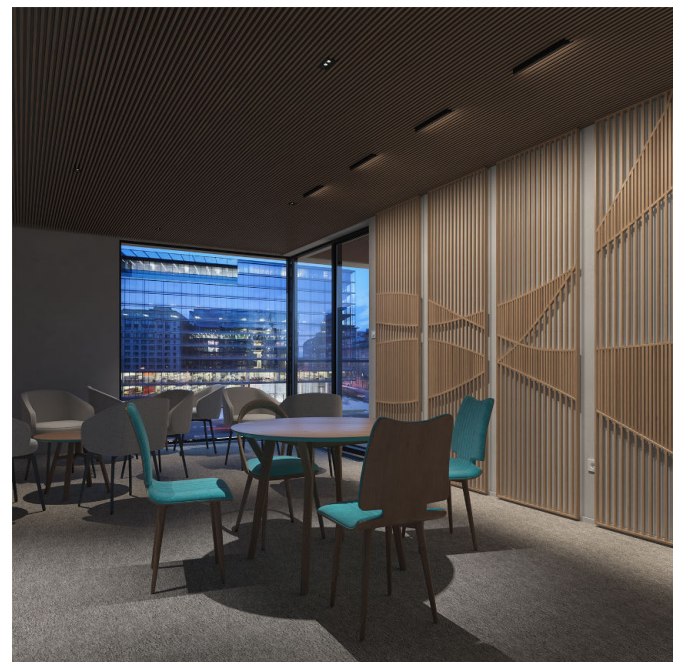
LIGHTING MANAGEMENT The choice of appropriate control gear enables integration into lighting management systems.

HOUSING Housing is made of aluminium, with visible frame. Finish: epoxy polyester powder coating. Fine structured texture. Standard trim colours: white, gray, black. Other colours available upon request.

APPLICATION Applicable to all types of suspended ceilings that can be cut through.

FEATURE Ideal longitudinal anti-glare. No light pollution, full cut off.

ADDITIONAL Dynamic White and other light colour temperatures available upon request.



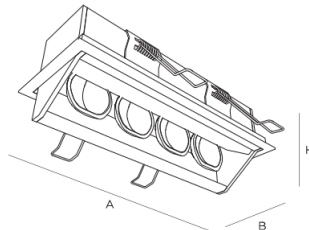
** Replace XY with the color code when ordering (e.g. 11 white, 21 grey, 31 black).

** Add '-5' on ordering code for DALI control gear or

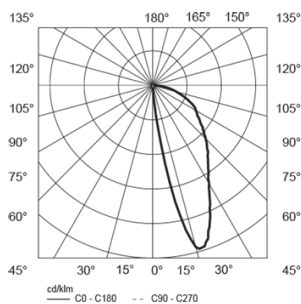
** Add '-4' on ordering code for 1-10V control gear

* Luminaire luminous flux and connected electrical load - initial tolerance of ± 10 % (at ambient temperature of 25°C).

MICRO WW 12 /840 HE



OC ECG **	Socket	A/B/H[mm]	a/b/h[mm]	Weight [kg]	Flux [lm]*	Total power [W]
1517113XY	LED	514/70/126	508/62/140	1.80	2774	26.0



CCT
4000 K
CRI
>80
LED Service life
50000h L80B10 /SCDM3

GENERAL Wall washer with unique vertical light distribution allows uniform illumination of wall from its top to the bottom.

OPTICS Wall washing component is based on reflectors with complex- surface micro- facet technology. The reflectors ensure high uniformity in lighting distribution on vertical plane.

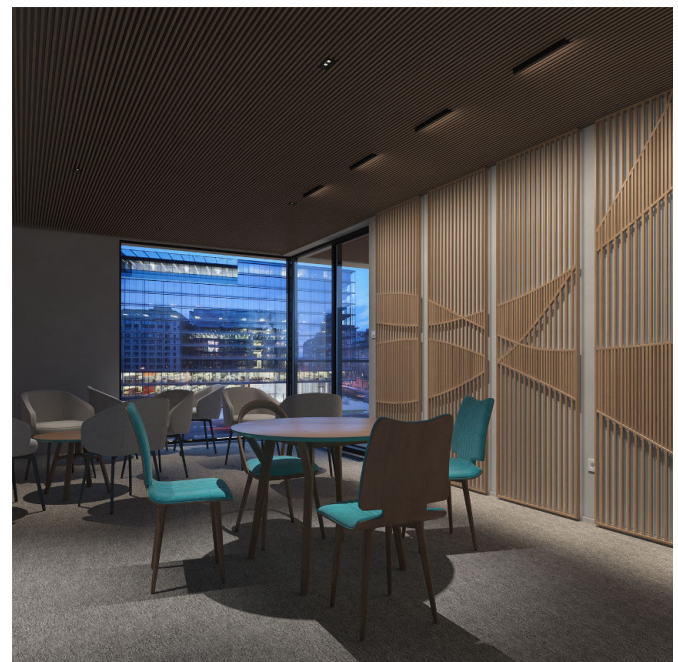
LIGHTING MANAGEMENT The choice of appropriate control gear enables integration into lighting management systems.

HOUSING Housing is made of aluminium, with visible frame. Finish: epoxy polyester powder coating. Fine structured texture. Standard trim colours: white, gray, black. Other colours available upon request.

APPLICATION Applicable to all types of suspended ceilings that can be cut through.

FEATURE Ideal longitudinal anti-glare. No light pollution, full cut off.

ADDITIONAL Dynamic White and other light colour temperatures available upon request.



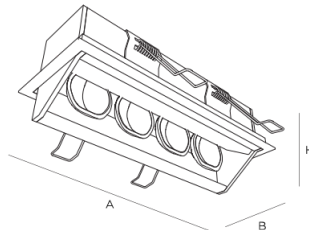
** Replace XY with the color code when ordering (e.g. 11 white, 21 grey, 31 black).

** Add '-5' on ordering code for DALI control gear or

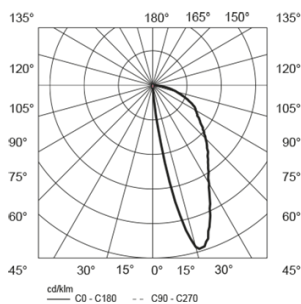
** Add '-4' on ordering code for 1-10V control gear

* Luminaire luminous flux and connected electrical load - initial tolerance of ± 10 % (at ambient temperature of 25°C).

MICRO WW 12 /840 HO



OC ECG **	Socket	A/B/H[mm]	a/b/h[mm]	Weight [kg]	Flux [lm]*	Total power [W]
1517116XY	LED	514/70/126	508/62/140	1.80	4488	45.0



CCT
4000 K
CRI
>80
LED Service life
50000h L80B10 /SCDM3

GENERAL Wall washer with unique vertical light distribution allows uniform illumination of wall from its top to the bottom.

OPTICS Wall washing component is based on reflectors with complex- surface micro- facet technology. The reflectors ensure high uniformity in lighting distribution on vertical plane.

LIGHTING MANAGEMENT The choice of appropriate control gear enables integration into lighting management systems.

HOUSING Housing is made of aluminium, with visible frame. Finish: epoxy polyester powder coating. Fine structured texture. Standard trim colours: white, gray, black. Other colours available upon request.

APPLICATION Applicable to all types of suspended ceilings that can be cut through.

FEATURE Ideal longitudinal anti-glare. No light pollution, full cut off.

ADDITIONAL Dynamic White and other light colour temperatures available upon request.



** Replace XY with the color code when ordering (e.g. 11 white, 21 grey, 31 black).

** Add '-5' on ordering code for DALI control gear or

** Add '-4' on ordering code for 1-10V control gear

* Luminaire luminous flux and connected electrical load - initial tolerance of ± 10 % (at ambient temperature of 25°C).