

grace

THRIVE Adjustable SM Installation Manual



Safety Instructions

1. Turn off power before installation or before doing any maintenance work.
2. Do not install any luminaire near a heat source.
3. For Indoor use.
4. Do not exceed the nominal supply voltage or amperage ratings.
5. All wiring and installation of this luminaire must adhere to local and national wiring rules eg AS/NZS 3000:2007 Amendment 2:2012 Electrical Installation
6. Take care not to pull any electrical wires during unpacking as this may damage the connection.
7. Lay out all the components on a smooth surface and make sure there are no components missing before assembling.
8. To avoid injury or damage to the fitting, please ensure that power leads and screws are secure before connecting the power.
9. Please keep instructions for future reference.

Installation Procedure

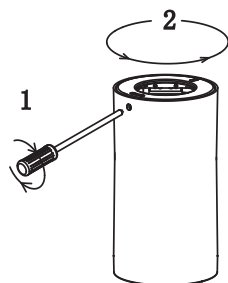
WARNING

1. Switch off before installation.
2. Switch on only after complete installation and examination of the circuit.
3. Professional electrician for installation and maintenance only.

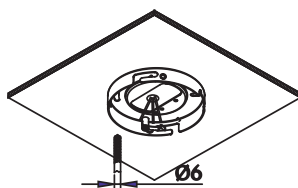


Turn Off power supply before starting any installation. Read instructions & check you have all the tools & accessories to complete the installation correctly.

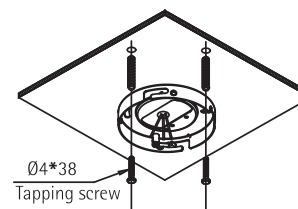
How to install suspended:



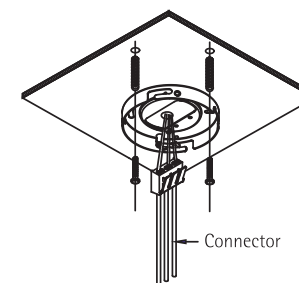
- 1 - Loosen the M3 screws
Rotate the back base off the lamp anti-clock wise



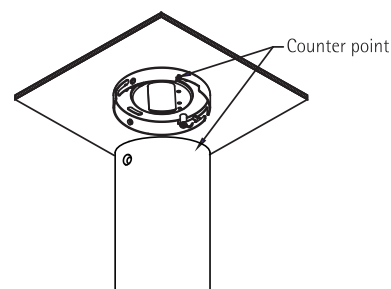
- 2 - Drill 2 holes of 6mm diameter in the ceiling according to position on back base



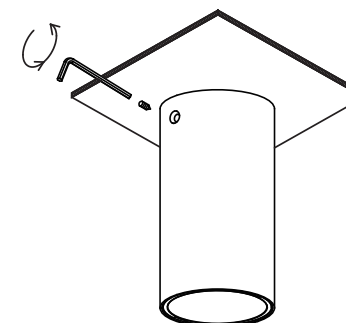
- 3 - Fix the back base on the ceiling by tapping screws



- 4 - Connect the AC power to the connectors



- 5 - Align the driver box to the counter-point and rotate clock wise to fix onto the back base



- 6 - Lock base with grub screw