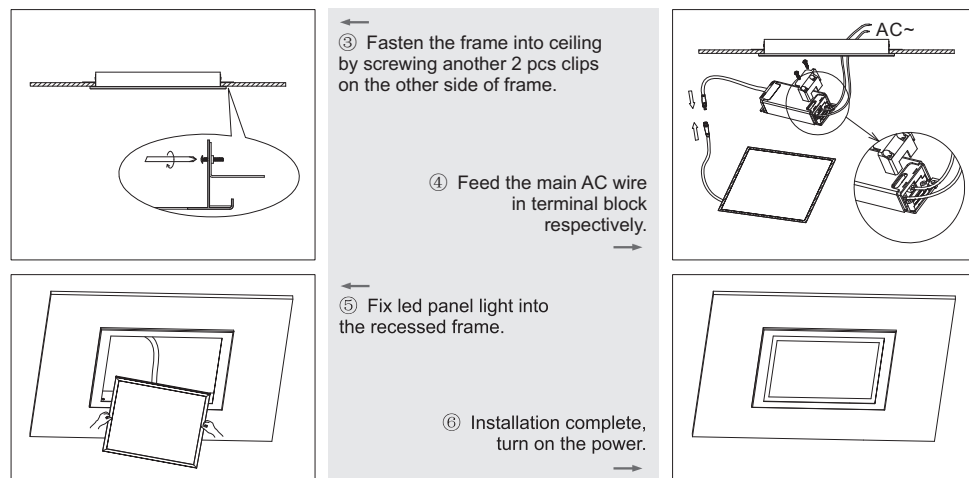
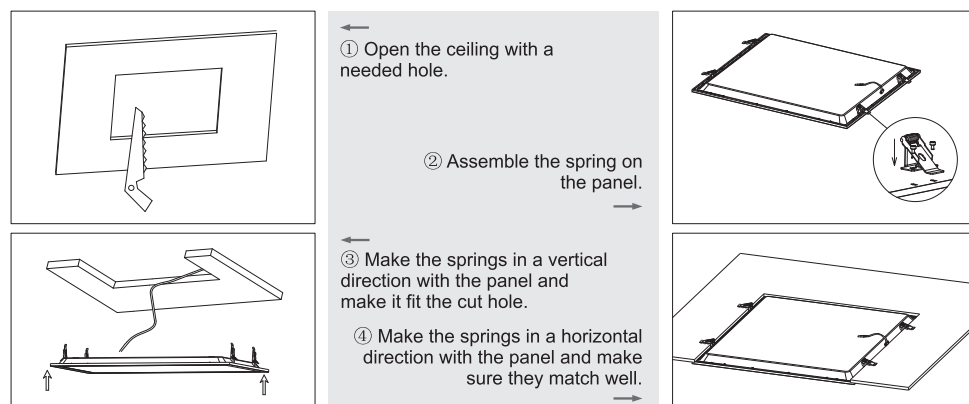


grace

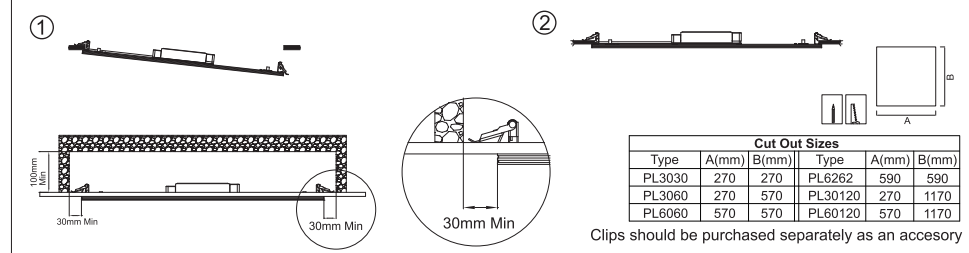
BALANCE Installation Manual



Installation For Plaster Ceilings

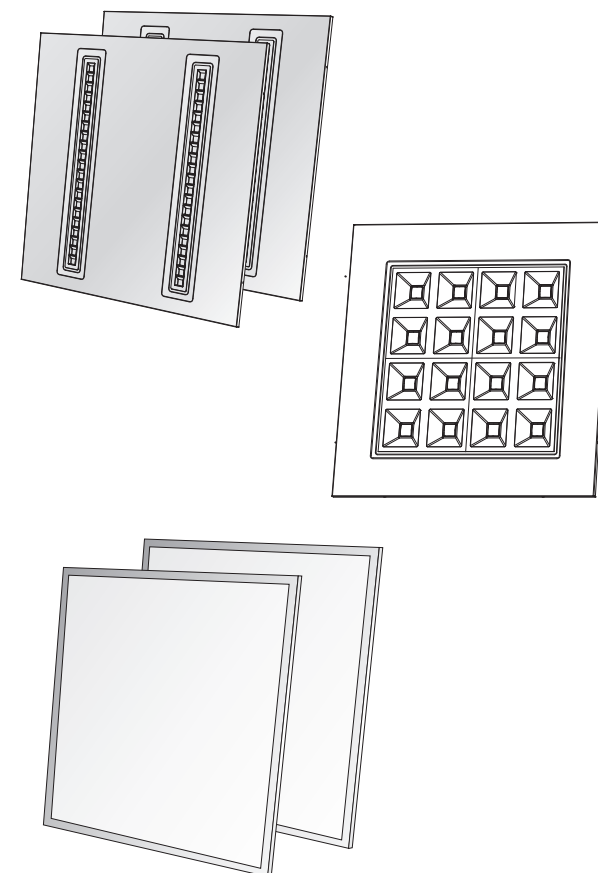


Recessed Mounting(Clips)



Warning:

Input wire diameter $\geq 0.75\text{mm}^2$;
Product modification and improper installation are not valid for warranty!



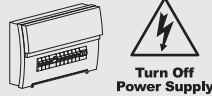
Safety Instruction:

1. Turn off power before installation or before doing any maintenance work.
 2. Do not install any luminaire near a heat source.
 3. For Indoor use.
 4. Do not exceed the nominal supply voltage or amperage ratings.
 5. All wiring and installation of this luminaire must adhere to local and national wiring rules eg AS/NZS 3000:2007 Amendment 2:2012
- Electrical Installation
6. Take care not to pull any electrical wires during unpacking as this may damage the connection.
 7. Lay out all the components on a smooth surface and make sure there are no components missing before assembling.
 8. To avoid injury or damage to the fitting, please ensure that power leads and screws are secure before connecting the power.
 9. Please keep instructions for future reference.

Installation Procedure

WARNING:

1. Switch off before installation.
2. Switch on only after complete installation and examination of the circuit.



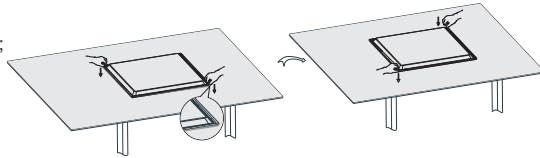
CAUTION:

Make sure that the mounting surface or structural member used for installation can support the weight of LED Panel.

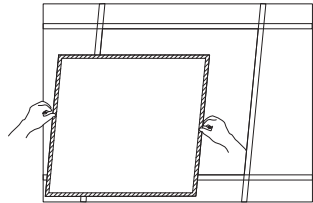
Lamp inspection before installation:

Take out the lamp from the box and put it in a flat table, if the lamp upwarps, please adjust the lamp with below steps before installation:

1. Press the opposite angles at the same time;
2. Press another two opposite angles at the same time, make sure the four angles are flat, then start the installation.



Recessed

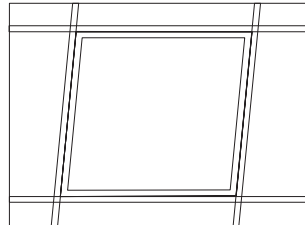
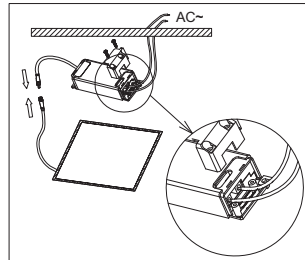


- ① Remove the ceiling plaster slab.

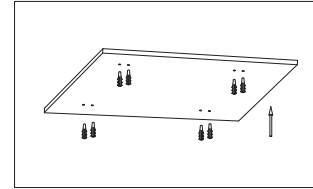
- ② Feed the main AC wire in driver terminal block respectively, connect the panel light and driver.

- ③ Fix the panel light into plaster ceiling.

- ④ Make sure the led panel light is firmly fixed, turn on the power.

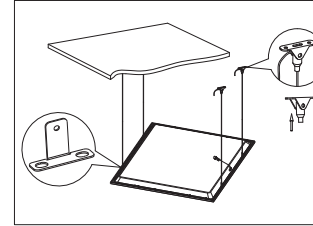


Suspended



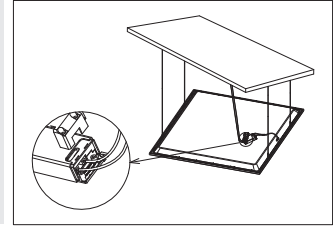
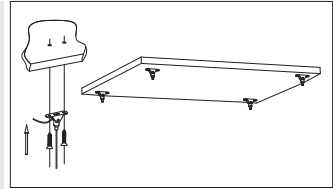
- ① Fix the anchor into target place on the ceiling.

- ② Fix the installation mount on the ceiling with plastic anchor.

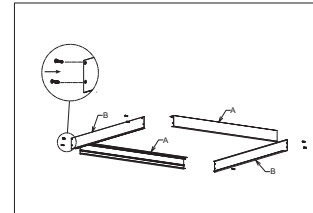


- ③ Hang the panel to ceiling with suspended installation kits, adjust the length of steel wires.

- ④ Feed the main AC wire in driver terminal block respectively, turn on the power.

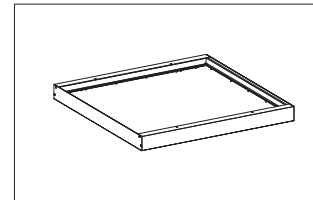


Surface mounted



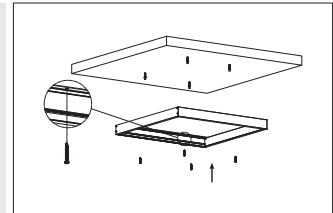
- ① Assemble the surface mounted frame and fix by screws.

- ② knock the plastic anchor into ceiling, fix the surface mounted frame on the ceiling by screws.

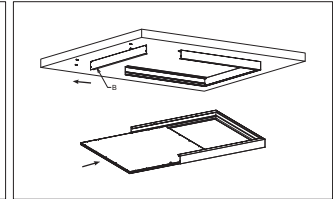
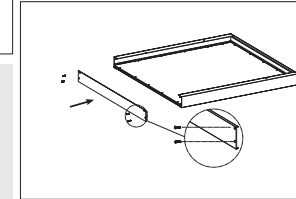


- ④ Fix the side frame back by screw.

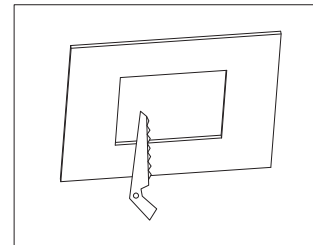
- ⑤ Make sure the frame and panel light are firmly fixed, turn on the power.



- ③ Unscrew the side frame then take out, connect the panel light to power supply, insert the panel light into the frame.



Recessed with frame



- ① Open a hole on ceiling according to cutout size of recessed frame.

- ② Fix 2pcs of clips to one side of frame by screw, then insert the frame into ceiling.

