

Installation Instructions Eco Panel

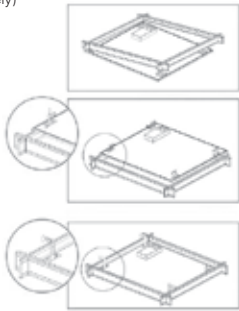
Product information

The Novii Panel is a ceiling mounted fixture available in different dimensions, wattages and mounting options to suit most projects.

Installation steps

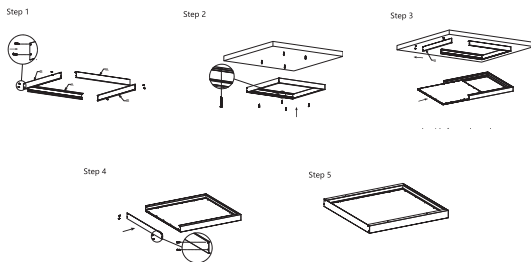
Tile Ceiling

Seismic Restraint (Supplied Separately)



Before installing the panel follow the seismic restraint diagram. Seismic restraint clips are factory installed on all FluxxLED panels and provide a failsafe in the event of an earthquake. The electrician is to make sure the clips are extended and overhanging the ceiling grid when they are installing this product.

Surface Mounted (Supplied Separately)



1. Assemble the surface mounted frame and fix by screws.
2. Knock the plastic anchor into ceiling, fix the surface mounted frame on the ceiling by screws.
3. Unscrew the side frame then take out, connect the panel light into the frame.
4. Fix the side frame back by screw.
5. Make sure the frame and panel light are firmly fixed, turn on the power.

Lamp inspection before installation:

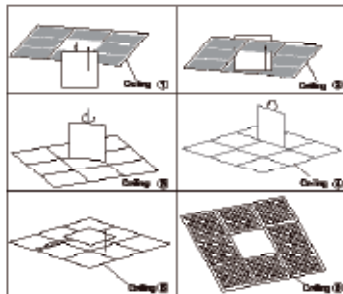
Remove panel form box and place on a flat surface:

1. Press down on opposite corners at the same time.
2. Repeat with remaining corners.
3. Insure the panel is flat before installation

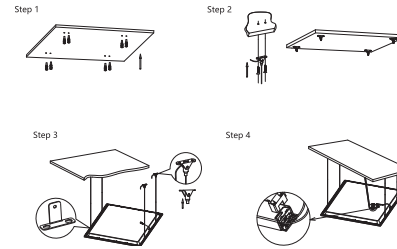
Corner lift tolerance ≤5mm

Installation

1. Put panel light at a diagonal position
2. Put the driver aside and insert panel light into ceiling.
3. Rotate panel light 45° degrees in horizontal direction and push into ceiling cavity.
4. Rotate panel light 90° in vertical direction and sit edges on ceiling grid frame.
5. Embed the panel light into ceiling, adjust it to a suitable position to make it as flat as ceiling.

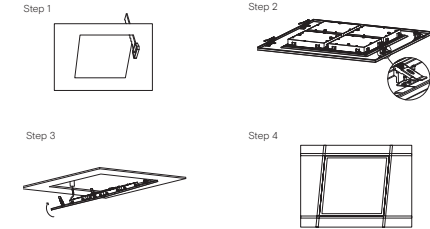


Suspension Mounted (Supplied Separately)



1. Fix the anchor into target place on the ceiling.
2. Fix the installation mount on the ceiling with plastic anchor.
3. Hang the panel to ceiling with suspended installation kits, adjust the length of steel wires.
4. Feed the main AC wire in driver terminal block respectively, turn on the power.

Recessed (Supplied Separately)



1. Open a hole according to the panel cut out size
2. Fix 4 clips (6 clips for 1200x600 panel) to frame via provided screws (Do not use screws already attached to panel)
3. Fix the panel light into plaster ceiling.
4. Make sure the led panel is firmly fixed, turn on the power.

Technical specifications

Model	Dimension	Power (W)	CCT (K)	PF	IP	Voltage	Dimmable
F3-16SSP	595mm x 295mm x 32mm	16	3000 - 5700	> 0.9	40	AC220-240V 50/60Hz	Non-dim Triac dim 1-10V DALI
F3-36SP	595mm x 595mm x 32mm	36	3000 - 5700	> 0.9	40	AC220-240V 50/60Hz	
F3-36MP	1195mm x 295mm x 32mm	36	3000 - 5700	> 0.9	40	AC220-240V 50/60Hz	
F3-60LP	1195mm x 595mm x 32mm	60	3000 - 5700	> 0.9	40	AC220-240V 50/60Hz	

Note : Please check panel label to see if fitting is dimmable and if so which type of dimming.

Regulations

To ensure correct functionality and safety please read instructions carefully before using this product.

This luminaire complies with AS/NZS 60598.2.2A.

All wiring and installation of this luminaire must adhere to local and national wiring rules eg AS/NZS 3000:2007 Amendment 2:2012 Electrical Installation

TIPS

1. Always ensure power is off and the fitting has cooled down before performing any maintenance or adjustment to the fitting
2. To avoid injury or damage to the fitting, ensure that power leads and screws are secure before connecting the power
3. Handle the fitting with care to avoid breakage
4. Find a suitable location away from liquids or hazards
5. To clean, wipe with a damp clean cloth. Never soak the fitting with water.