

Installation Instructions

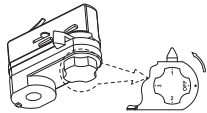
Product information

FluxxLED Cross, Beam and Form tracklights offer minimal design aesthetics, industry leading features and excellent efficiency.

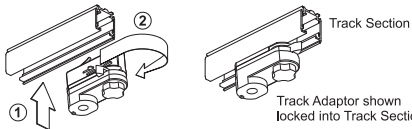
Installation steps

Step 1 :

Turn Off power supply before starting any installation. Read instructions and check you have all the tools to complete the installation correctly.

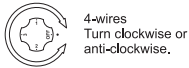


4-wires adaptor



Track Section

Track Adaptor shown locked into Track Section



4-wires
Turn clockwise or anti-clockwise.

Step 2 :

Prior to locating adaptor into track section make sure it is set in the OFF position and locking lever is set in the position shown.

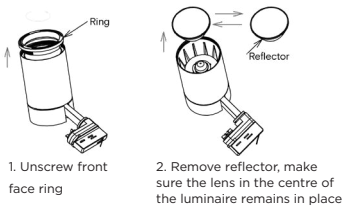
Step 3 :

Locate track adaptor into track section (1) and lock into position by turning locking lever 90° (2).

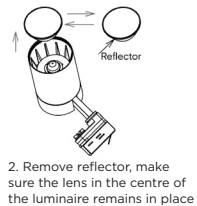
Step 4 :

Rotate clockwise or anti-clockwise to select desired track circuit

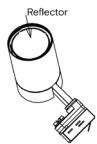
Cross tracklight - Reflector change



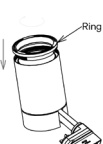
1. Unscrew front face ring



2. Remove reflector, make sure the lens is in the centre of the luminaire remains in place

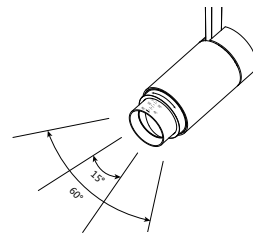


3. Install new reflector



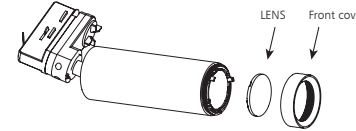
4. Screw front face ring back into place

Beam tracklight - Beam angle adjustment



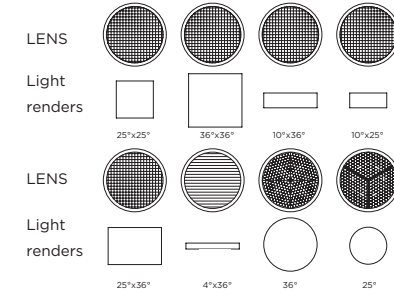
To adjust beam angle : Rotate the the track ring.

Form tracklight - Lens change



LENS Front cover

Unscrew front cover and swap lens by lightly pushing on clips. Lens type is inscribed on the outer edge of the lens. Rotate lens once installed and powered to desired beam orientation for all beam angles aside from 36° and 25°



Technical specifications

Model	Dimension	Power (W)	CCT (K)	PF	IP	Voltage	Control
F10FT	Ø54mm x H240mm	10	2700 -5000	> 0.9	20	AC220-240V 50/60Hz	Switchable / Phase-cut Dimmable
F15CT	Ø65mm x H254mm	15	2700 -5000	> 0.9	20	AC220-240V 50/60Hz	
F25CT	Ø80mm x H254mm	25	2700 -5000	> 0.9	20	AC220-240V 50/60Hz	
F35CT	Ø100mm x H259mm	35	2700 -5000	> 0.9	20	AC220-240V 50/60Hz	
F15BT	Ø65mm x H234mm	15	2700 -5000	> 0.9	20	AC220-240V 50/60Hz	
F25BT	Ø80mm x H260mm	25	2700 -5000	> 0.9	20	AC220-240V 50/60Hz	
F30BT	Ø100mm x H265mm	30	2700 -5000	> 0.9	20	AC220-240V 50/60Hz	

Note: Check label for type of control

Regulations

To ensure correct functionality and safety please read instructions carefully before using this product. This luminaire complies with AS/NZS 60598.2.1.

All wiring and installation of this luminaire must adhere to local and national wiring rules eg AS/NZS 3000:2007 Amendment 2:2012 Electrical Installation

Safety Instruction

When installing or using this track system, basic safety precautions should be followed below:

1. For indoor use only. Do not install track in damp or wet locations
2. Turn off power before installation or before doing any maintenance work
3. Do not exceed the nominal supply voltage of amperage ratings
4. Do not attempt to energize anything other than lighting track luminaires on the track
5. Do not connect the track to more than one branch circuit unless the track is constructed so that it can be used with more than one branch circuit. Check with a qualified electrician.
6. Product must be mounted in location and at height in a manner consistent with its intended use, and in compliance with National Electrical Code and building code
7. Phase-cut dimmable fittings are compatible with most phase-cut dimmers