

## Installation Instructions

### UDON 1023

### Product information

UDON 1023 is a silicone based bendable luminaire that is IP65, cuttable and provides a continuous line of light.

### Installation Steps

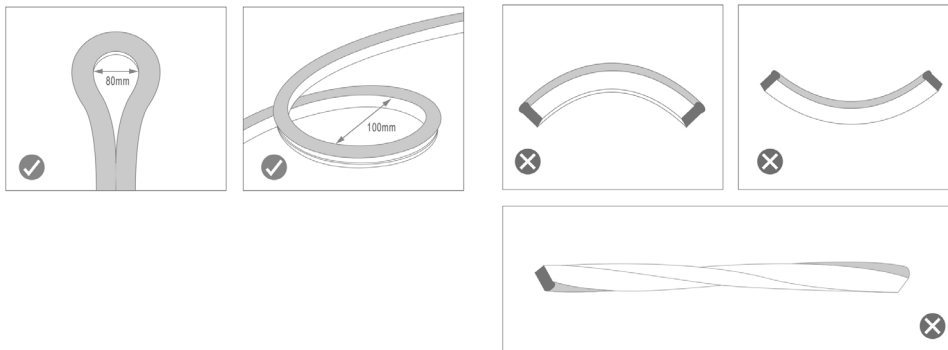
(Indoor Applications Only)

UDON comes preattached with power feed cap, 200mm tail and end cap per 10m length that are factory fitted and silicone sealed to meet IP65 rating. Power feed caps for cable output from right, left, bottom also come as standard. All UDON intended for outdoor applications needs to be factory fitted. Please consult Novii if a specific length is required for outdoor applications, lead times apply.

### Warnings

Please note that the UDON is not bendable in all directions.

Please follow the instructions below :

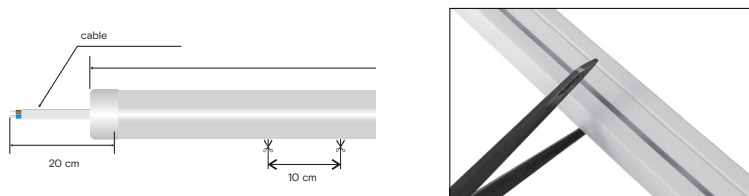


### Cutting

(Indoor IP20 Applications Only)

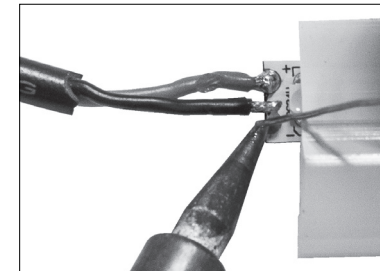
Cut UDON at the cutting mark (look through cutting window for the copper/dark spot and cut in the middle of this spot).

UDON can be cut with standard scissors or with a sharp blade. If no soldering is required fill end cap with silicone glue and push onto end. Wait for silicone glue to cure.

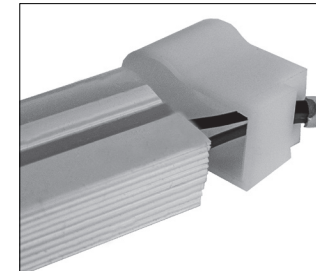


### Soldering

(Indoor IP20 Applications Only)



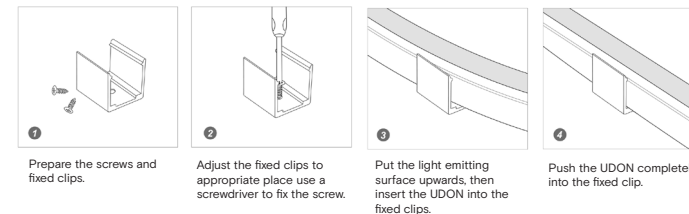
1. Solder on cable to solder pads inside UDON 1023. Make sure cable is firmly attached to solder pads.



2. Push end of the wire through the power feed cap hole. Fill end cap with silicone glue and push onto end of UDON 1023. If attaching an end cap without a hole fill end cap with silicone glue and push onto the end of UDON 1023. Wait for silicone glue to cure.

### Attach to Mounting Clips/Profile

(Indoor IP20 Applications Only)



## Installation Instructions

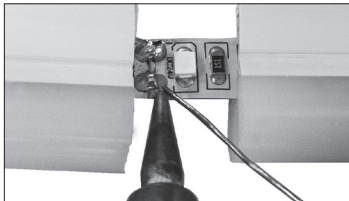
### UDON 1023

#### Seamless Joining

(Indoor IP20 Applications Only)

UDON can be seamlessly joined together (like LED strip) to create a continuous line of light. The LED strip inside UDON can be moved slightly in order to solder two LED strips together.

1. Make sure the ends of UDON you are seamlessly joining have had their solder pads tinned to make this process easier.



2. Pull LED strip out 5mm so a soldering iron tip can reach the solder pads

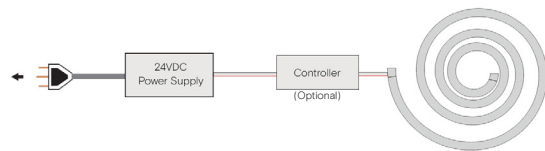
3. Solder pads together

4. Push LED strip back into UDON housing by pushing both UDON ends together

5. To insure a solid connection between joins use a mounting clip



#### Wiring Diagram



#### Notes

Connect to 24VDC power supply (connect to optional controller for dimming/pixel control)

- UDON must be used in conjunction with a 24VDC power supply

Ensure to add 20% buffer when selecting a power supply.

- Always observe proper polarity

- To minimise voltage drop and ensure consistent light output, position the power supply near to the power feed end of UDON, and keep the line as short as possible. The electrician is to allow for voltage drop.

- Ensure your maximum run per power feed adheres to the guidelines; 10m when powering from one end, or 20m when powering from both ends

#### Technical Specifications

Model	Dimension	Power (W)	CCT (K)	IP	Voltage	Dimmable
FU1023	W10mm x H23mm	14.4/m	2700 - 6000	65	24V	Refer to Specification Sheet
FU1023-RGB	W10mm x H23mm	14.4/m	RGB	65	24V	Refer to Specification Sheet
FU1023-RGBP	W10mm x H23mm	10/m	RGB	65	24V	Refer to Specification Sheet

#### Package

Model	Description	SKU per package
FU1023	LED Flex Profile	1 x 10 m
FU1023-EC	End Caps	4
FU1023-PFL	Power Feed Left	1
FU1023-PFR	Power Feed Right	1
FU1023-PFB	Power Feed Bottom	1
FU1023-MC	Mounting Clips	10
	Silicone Glue	1 x 20 ml

Udon 1023 is sold in a 10m pack with pre-attached Power Feed Bottom and End Cap.

This pack also includes multiple accessories for most applications.

#### Regulations

To ensure correct functionality and safety please read instructions carefully before using this product.

All wiring and installation of this luminaire must adhere to local and national wiring rules eg AS/NZS 3000:2007 Amendment 2:2012 Electrical Installation. This product must be installed by an electrician.

#### TIPS

1. Always ensure power is off and the fitting has cooled down before performing any maintenance or adjustment to the fitting
2. To avoid injury or damage to the fitting, ensure that power leads and screws are secure before connecting the power
3. Handle the fitting with care to avoid breakage
4. Find a suitable location away from liquids or hazards (unless UDON is being supplied for outdoor application)
5. To clean, wipe with a damp clean cloth. Never soak the fitting with water.