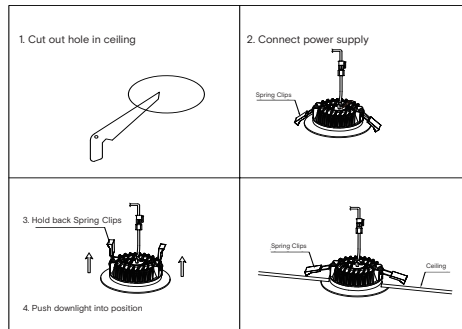


Installation Instructions Low Wattage Downlight

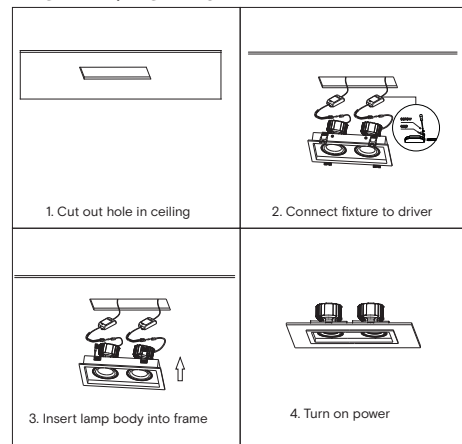
Product information

The Novii Low Wattage Downlight is a recessed ceiling fixture available in several colours, wattages, beam angles and dimming options to suit most projects.

Installation steps



FCF12-2 / FCF12-3



Technical specifications

Model	Dimension	Cut-out dimension	Power (W)	CCT (K)	PF	IP	Voltage	Control
FCA12	Ø95mm x H76mm	Ø75mm	12	2700 - 6000 + Sunset dim	> 0.9	20	AC220-240V 50/60Hz	Non-dim Triac dimm Sunset dim 1-10V DALI
FCB12	Ø98mm x H86mm	Ø85mm	12	2700 - 6000 + Sunset dim	> 0.9	20	AC220-240V 50/60Hz	
FCC12	L95mm x W95mm x H86mm	L75mm x W75mm	12	2700 - 6000 + Sunset dim	> 0.9	20	AC220-240V 50/60Hz	
FCD12	L98mm x W98mm x H94mm	L85mm x W85mm	12	2700 - 6000 + Sunset dim	> 0.9	20	AC220-240V 50/60Hz	
FCE12	Ø85mm x H75mm	Ø70mm	12	2700 - 6000 + Sunset dim	> 0.9	44	AC220-240V 50/60Hz	
FCF12-2	L200mm x W10mm x H74.5mm	L190mm x W100mm	2x12	2700 - 6000 + Sunset dim	> 0.9	20	AC220-240V 50/60Hz	
FCF12-3	L285mm x W10mm x H74.5mm	L270mm x W100mm	3x12	2700 - 6000 + Sunset dim	> 0.9	20	AC220-240V 50/60Hz	
F7CIP	Ø108mm x H40mm	Ø90mm	7	3000 - 4000	> 0.9	44	AC220-240V 50/60Hz	
F7SD	Ø108mm x H40mm	Ø90mm	7	3000 - 4000	> 0.9	44	AC220-240V 50/60Hz	
F10CIP	Ø108mm x H40mm	Ø90mm	10	3000 - 4000	> 0.9	44	AC220-240V 50/60Hz	
F10SD	Ø108mm x H40mm	Ø90mm	10	3000 - 4000	> 0.9	44	AC220-240V 50/60Hz	

Note : Please check downlight label to see if fitting is dimmable and if so which type of dimming.

Regulations

To ensure correct functionality and safety please read instructions carefully before using this product. This luminaire complies with AS/NZS 60598.2.2A.

All wiring and installation of this luminaire must adhere to local and national wiring rules eg AS/NZS 3000:2007 Amendment 2:2012 Electrical Installation

TIPS

1. Always ensure power is off and the fitting has cooled down before performing any maintenance or adjustment to the fitting
2. To avoid injury or damage to the fitting, ensure that power leads and screws are secure before connecting the power
3. Handle the fitting with care to avoid breakage
4. Find a suitable location away from liquids or hazards
5. To clean, wipe with a damp clean cloth. Never soak the fitting with water.