

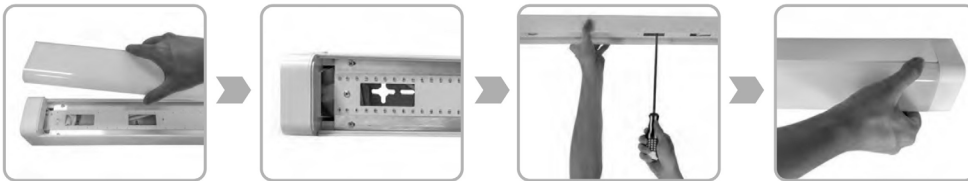
Installation Instructions Wide Batten

Product information

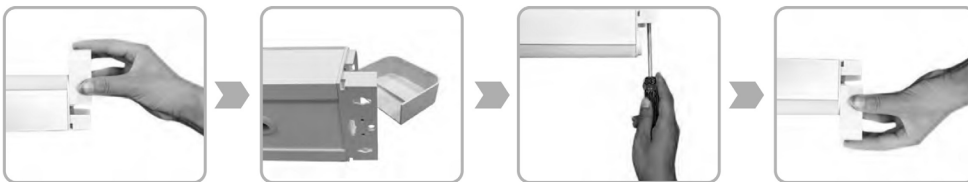
The Novii Wide Batten is an indoor fixture that can be suspended or surface mounted to suit most projects. Highly reliable and cost effective.

Installation steps

Option 1 : Remove PC cover for installation



Option 2 : Remove End caps for installation



Technical specifications

Model	Dimension	Power (W)	CCT (K)	PF	IP	Voltage	Control
F20B2	L590mm x W80mm x H64.5mm	20	3000 - 5000	> 0.9	20	AC220-240V 50/60Hz	Non-dim Triac dim 1-10V DALI
F40B2	L1190mm x W80mm x H64.5mm	40	3000 - 5000	> 0.9	20	AC220-240V 50/60Hz	
F50B2	L1490mm x W80mm x H64.5mm	50	3000 - 5000	> 0.9	20	AC220-240V 50/60Hz	

Note : Please check batten label to see if fitting is dimmable and if so which type of dimming.

Regulations

To ensure correct functionality and safety please read instructions carefully before using this product. This luminaire complies with AS/NZS 60598.2.1.

All wiring and installation of this luminaire must adhere to local and national wiring rules eg AS/NZS 3000:2007 Amendment 2:2012 Electrical Installation

TIPS

1. Always ensure power is off and the fitting has cooled down before performing any maintenance or adjustment to the fitting
2. To avoid injury or damage to the fitting, ensure that power leads and screws are secure before connecting the power
3. Handle the fitting with care to avoid breakage
4. Find a suitable location away from liquids or hazards
5. To clean, wipe with a damp clean cloth. Never soak the fitting with water.