

## Installation Instructions Panel

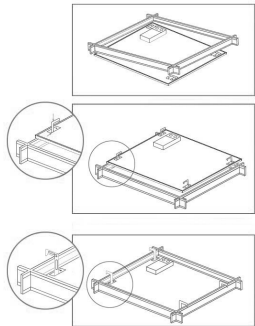
### Product information

The Novii Panel is a ceiling mounted fixture available in different dimensions, wattages and mounting options to suit most projects.

### Installation steps

#### Tile Ceiling

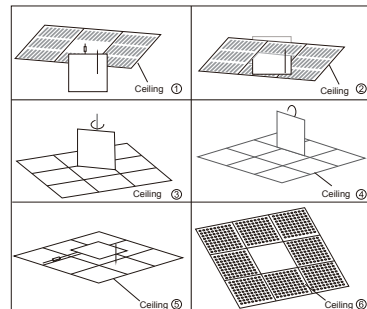
##### Seismic Restraint



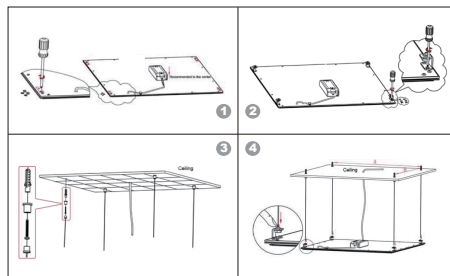
Before installing the panel follow the seismic restraint diagram. Seismic restraint clips are factory installed on all FluxLED panels and provide a failsafe in the event of an earthquake. The electrician is to make sure the clips are extended and overhang the ceiling grid when they are installing this product.

##### Installation

1. Put panel light at a diagonal position
2. Put the driver aside and insert panel light into ceiling.
3. Rotate panel light 45° degrees in horizontal direction and push into ceiling cavity.
4. Rotate panel light 90° in vertical direction and sit edges on ceiling grid frame.
5. Embed the panel light into ceiling, adjust it to a suitable position to make it as flat as ceiling.

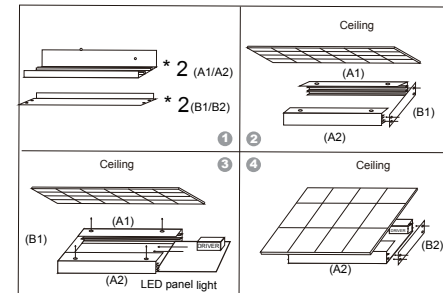


#### Suspension Mounted



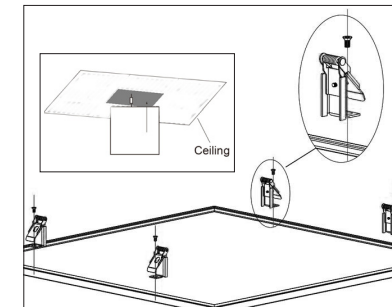
1. Loosen the 8pcs screws
2. Fix four/six L type brackets onto panel plate
3. Drill five holes (diameter 7-8mm) on the ceiling, the centre hole is an outlet for power cable.  
Fix accessories holder into the other four holes at each side  
Assemble SP4\*32 head self-tapping screw and holder together and fix them into the holes  
Pass steel cable through holder, rotate and connect with the other holder then tighten it.
4. Fix the steel cable to the lock device in L type bracket, adjust the length to be 15mm by pressing the lock device.
5. After its installation, position wires tightly in lock device with hex wrench to avoid the lights unbalance
6. Adjust the position of the drilling holes in ceilings according to specification.

#### Surface Mounted



1. Parts A1, A2, B1, B2.
2. Install A1, A2 and B1, see picture 2.
3. Fix A1 and A2 on the ceiling and insert the panel light directly (the end with the power source enters later)
4. Install B2, turn power on.

#### Recessed



1. Cut hole in the ceiling
2. Attach recessed clips on panel
3. Insert panel in ceiling hole
4. Turn power on

### Technical specifications

Model	Dimension	Power (W)	CCT (K)	PF	IP	Voltage	Control
F40SP	595mm x 595mm x 10mm	40	3000 - 5000	> 0.9	20	AC220-240V 50/60Hz	Non-dim Triac dim 1-10V DALI
F60SP	595mm x 595mm x 10mm	60	3000 - 5000	> 0.9	20	AC220-240V 50/60Hz	
F40MP	1195mm x 295mm x 10mm	40	3000 - 5000	> 0.9	20	AC220-240V 50/60Hz	
F60MP	1195mm x 295mm x 10mm	60	3000 - 5000	> 0.9	20	AC220-240V 50/60Hz	
F72LP	1195mm x 595mm x 10mm	72	3000 - 5000	> 0.9	20	AC220-240V 50/60Hz	

Note : Please check panel label to see if fitting is dimmable and if so which type of dimming.

### Regulations

To ensure correct functionality and safety please read instructions carefully before using this product.

This luminaire complies with AS/NZS 60598.2.2A.

All wiring and installation of this luminaire must adhere to local and national wiring rules eg AS/NZS

3000:2007 Amendment 2:2012 Electrical Installation

### TIPS

1. Always ensure power is off and the fitting has cooled down before performing any maintenance or adjustment to the fitting
2. To avoid injury or damage to the fitting, ensure that power leads and screws are secure before connecting the power
3. Handle the fitting with care to avoid breakage
4. Find a suitable location away from liquids or hazards
5. To clean, wipe with a damp clean cloth. Never soak the fitting with water.