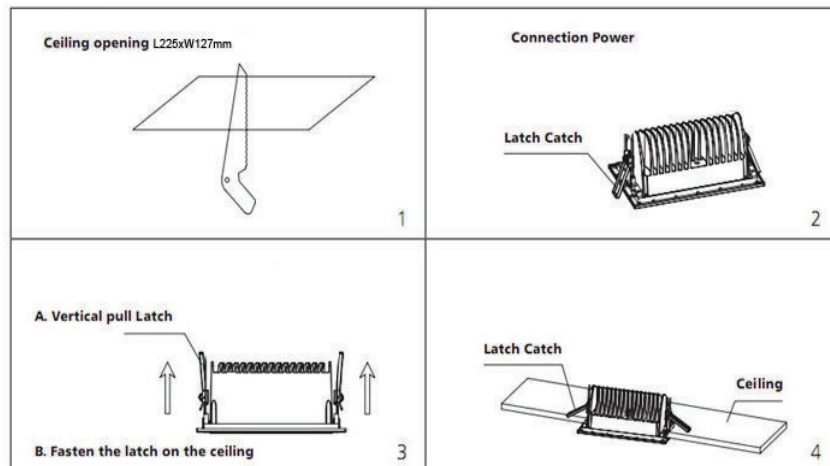
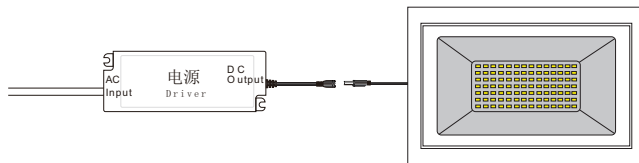


## Installation Instructions Square Wallwasher

### Product information

The Novii Square Wallwasher is a recessed fixture available in several colours and wattages to suit most projects.

### Installation steps



### Technical specifications

Model	Dimension	Cutout	Power (W)	CCT (K)	PF	IP	Voltage	Control
F40W	240mm x 157mm x 92 mm	225mm x 127mm	40	3000 - 4000	> 0.9	40	AC110-240V 50/60Hz	Non-dim Triac dim

Note : Please check downlight label to see if fitting is dimmable and if so which type of dimming.

### Regulations

To ensure correct functionality and safety please read instructions carefully before using this product. This luminaire complies with AS/NZS 60598.2.2A.

All wiring and installation of this luminaire must adhere to local and national wiring rules eg AS/NZS 3000:2007 Amendment 2:2012 Electrical Installation

### TIPS

1. Always ensure power is off and the fitting has cooled down before performing any maintenance or adjustment to the fitting
2. To avoid injury or damage to the fitting, ensure that power leads and screws are secure before connecting the power
3. Handle the fitting with care to avoid breakage
4. Find a suitable location away from liquids or hazards
5. To clean, wipe with a damp clean cloth. Never soak the fitting with water.