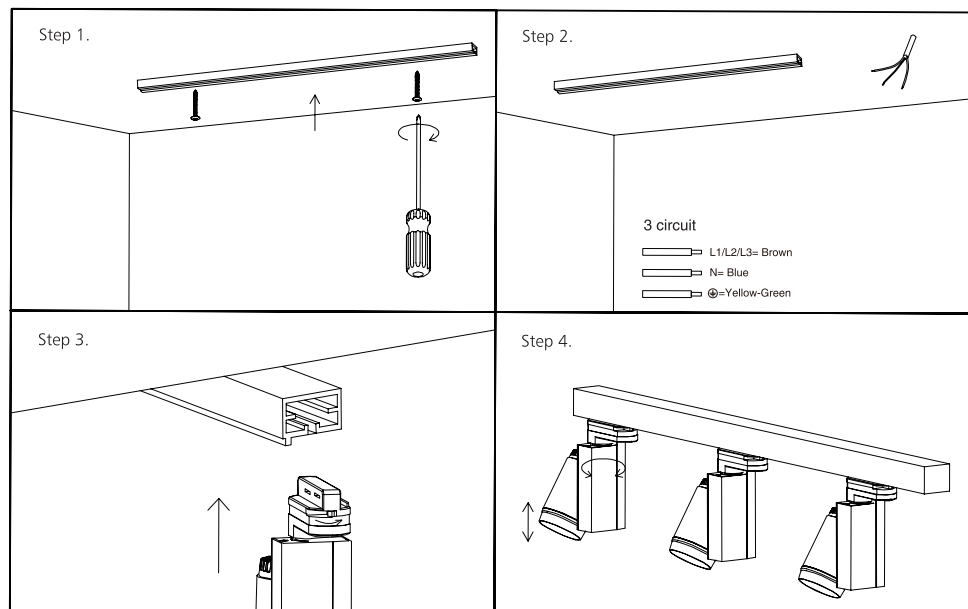


Installation Instructions Low Wattage Tracklight

Product information

The Novii Low Wattage Tracklight is a track mounted fixture available in different colours and dimming options to suit most projects.

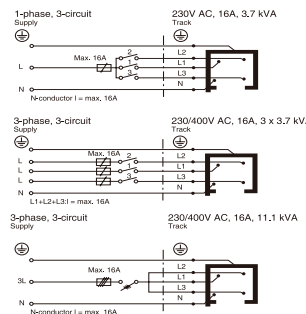
Installation steps



1. Switch off before installation, mount track to ceiling with mounting clips.
2. Connect track terminal block with "L", "N", "G" properly.
3. Insert fixture track adaptor into track making sure the two data bus contacts are on the same side as the data rail on the track.

Follow the steps below :

- Align the adapter and contacts parallel with track.
 - Pull down latch on adapter and insert adaptor into track.
 - (Note : Twist the adaptor and ground contact toward the polarity groove)
 - Support the fixture with one hand and twist the adaptor 1/4 turn till the latch locks into the track.
 - 4. Adjust tracklight towards target object both vertically and horizontally.
- Switch on and test for correct operation.



Technical specifications

Model	Dimension	Power (W)	CCT (K)	PF	IP	Voltage	Control
F12VT	Ø62mm x H182mm	12	2700 – 5000	> 0.9	20	AC220-240V 50/60Hz	Non-dim Triac dim

Note : Please check batten label to see if fitting is dimmable and if so which type of dimming.

Regulations

To ensure correct functionality and safety please read instructions carefully before using this product. This luminaire complies with AS/NZS 60598.2.1.

All wiring and installation of this luminaire must adhere to local and national wiring rules eg AS/NZS 3000:2007 Amendment 2:2012 Electrical Installation

TIPS

1. Always ensure power is off and the fitting has cooled down before performing any maintenance or adjustment to the fitting
2. To avoid injury or damage to the fitting, ensure that power leads and screws are secure before connecting the power
3. Handle the fitting with care to avoid breakage
4. Find a suitable location away from liquids or hazards
5. To clean, wipe with a damp clean cloth. Never soak the fitting with water.