

## Installation Instructions

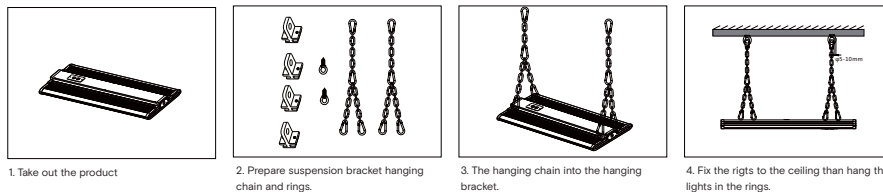
### Slimline Highbay

#### Product information

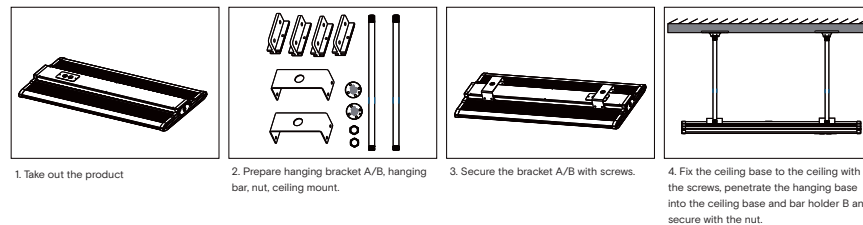
The Novii Slimline Highbay is a fixture that can be suspended or surface mounted to suit most projects. Highly reliable and cost effective.

#### Installation steps

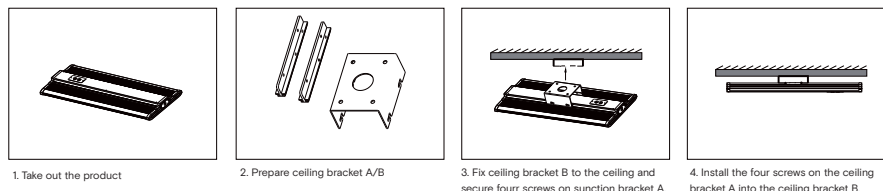
##### Suspended



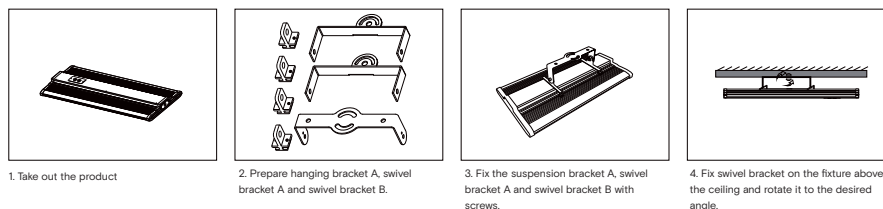
##### Suspended



##### Surface mounted



##### Surface mounted



#### Technical specifications

Model	Dimension	Power (W)	CCT (K)	PF	IP	Voltage	Control
F100EH	L450mm x W380mm x H62mm	100	3000 - 5700	> 0.9	20	AC220-240V 50/60Hz	Non-dim 1-10V DALI
F120EH	L450mm x W380mm x H62mm	120	3000 - 5700	> 0.9	20	AC220-240V 50/60Hz	
F150EH	L450mm x W380mm x H62mm	150	3000 - 5700	> 0.9	20	AC220-240V 50/60Hz	
F200EH	L600mm x W380mm x H62mm	200	3000 - 5700	> 0.9	20	AC220-240V 50/60Hz	
F280EH	L900mm x W380mm x H62mm	280	3000 - 5700	> 0.9	20	AC220-240V 50/60Hz	
F400EH	L1200mm x W380mm x H62mm	400	3000 - 5700	> 0.9	20	AC220-240V 50/60Hz	

Note : Please check highbay label to see if fitting is dimmable and if so which type of dimming.

#### Regulations

To ensure correct functionality and safety please read instructions carefully before using this product. This luminaire complies with AS/NZS 60598.2.1.

All wiring and installation of this luminaire must adhere to local and national wiring rules eg AS/NZS 3000:2007 Amendment 2:2012 Electrical Installation

#### TIPS

1. Always ensure power is off and the fitting has cooled down before performing any maintenance or adjustment to the fitting
2. To avoid injury or damage to the fitting, ensure that power leads and screws are secure before connecting the power
3. Handle the fitting with care to avoid breakage
4. Find a suitable location away from liquids or hazards
5. To clean, wipe with a damp clean cloth. Never soak the fitting with water.