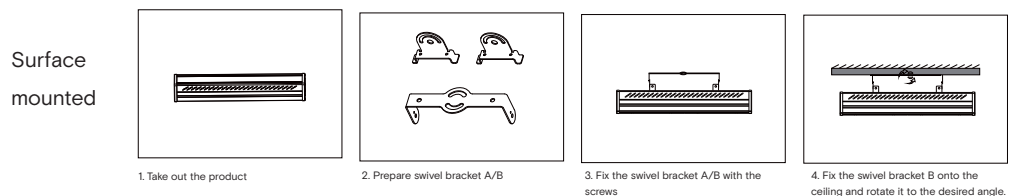
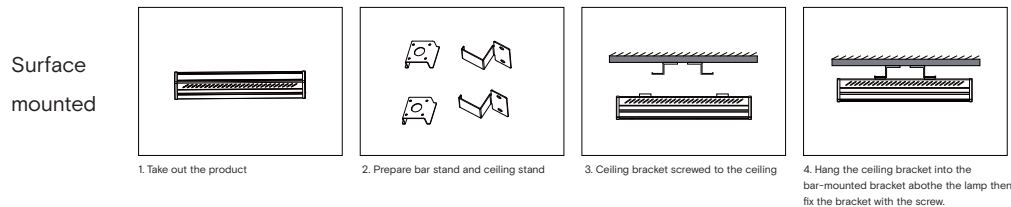
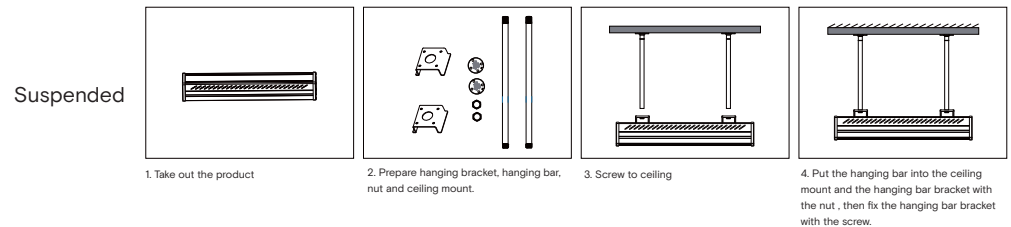
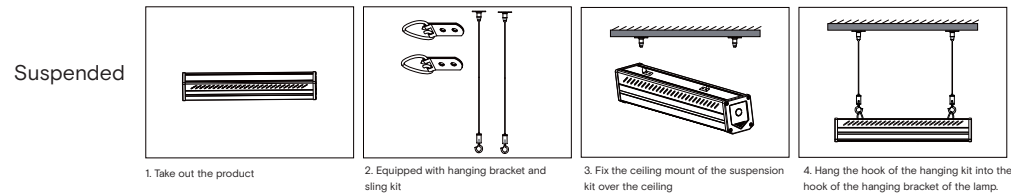


Installation Instructions Linear Highbay

Product information

The Novii Linear Highbay is a fixture that can be suspended or surface mounted to suit most projects. Highly reliable and cost effective.

Installation steps



Technical specifications

Model	Dimension	Power (W)	CCT (K)	PF	IP	Voltage	Control
F80LH	L605mm x W104mm x H92mm	80	3000 - 5700	> 0.9	20	AC220-240V 50/60Hz	Non-dim 1-10V DALI
F150LH	L898mm x W104mm x H92mm	150	3000 - 5700	> 0.9	20	AC220-240V 50/60Hz	
F180LH	L1192mm x W104mm x H92mm	180	3000 - 5700	> 0.9	20	AC220-240V 50/60Hz	
F240LH	L1486mm x W104mm x H92mm	240	3000 - 5700	> 0.9	20	AC220-240V 50/60Hz	

Note : Please check highbay label to see if fitting is dimmable and if so which type of dimming.

Regulations

To ensure correct functionality and safety please read instructions carefully before using this product. This luminaire complies with AS/NZS 60598.2.1.

All wiring and installation of this luminaire must adhere to local and national wiring rules eg AS/NZS 3000:2007 Amendment 2:2012 Electrical Installation

TIPS

1. Always ensure power is off and the fitting has cooled down before performing any maintenance or adjustment to the fitting
2. To avoid injury or damage to the fitting, ensure that power leads and screws are secure before connecting the power
3. Handle the fitting with care to avoid breakage
4. Find a suitable location away from liquids or hazards
5. To clean, wipe with a damp clean cloth. Never soak the fitting with water.