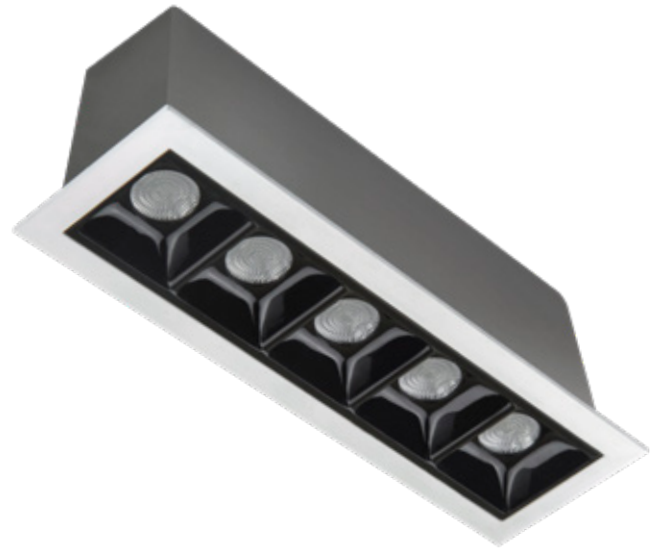


Linear Downlight



The Linear Downlight packs a lot into a very small package. Its UGR<19 rating offers exceptional low-glare properties. The use of micro-optic technology delivers a minimal and highly efficient lighting solution.

Physical

Housing ADC12 aluminium
Optics PMMA
Trim finish White, Black
Mounting type Recessed

Electrical

Voltage and Current 5-40V, 60-550mA
Control Non-dimmable, 1-10V, DALI

Certification

Warranty 5 years
Category IP20
AS/NZS 60598.2.1
AS/NZS 60598.2.2A
TM21 report on request

Optical

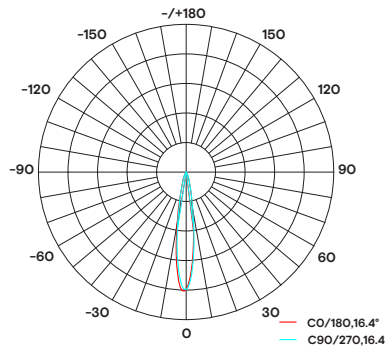
Beam angle 15°, 30°, 45°
CCT 3000, 4000, 5000K
CRI 80, 90
UGR < 19
Efficiency 80lm/W



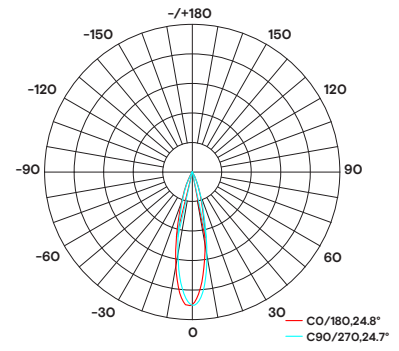
RoHS



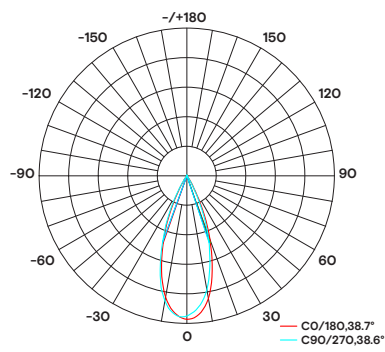
BEAM ANGLE 15°



BEAM ANGLE 30°



BEAM ANGLE 45°



SKU	Wattage	Lumen Output	Dimensions LxWxH mm	Cutout LxW mm	Technical Drawing
G2LR	2W	160lm	45 x 45 x 49	37 x 37	
G4LR	4W	320lm	75 x 45 x 49	68 x 37	
G10LR	10W	800lm	147 x 45 x 49	140 x 37	
G20LR	20W	1600lm	280 x 45 x 49	273 x 37	
G20LRL	20W	1600lm	412.7 x 45 x 49	405 x 37	

SKU Builder

Use our SKU Builder below to create custom codes from our range.

	Series	Wattage	Type	Product Descriptor	Trim Finish	CRI	CCT	Beam Angle	Control
SKU CODE	G Grace	2 2W	L Linear Downlight	R Recessed	B Black	8 80 CRI	3 3000K	15 15°	N Non-Dim
		4 4W		RL Recessed Long	W White	9 90 CRI	4 4000K	30 30°	D10 1-10V
		10 10W	T Trimless		↑	↑	5 5000K	45 45°	DA DALI
		20 20W	TL Trimless Long				↑	↑	↑
		↑	A Adjustable						
			AL Adjustable Long						
									↑