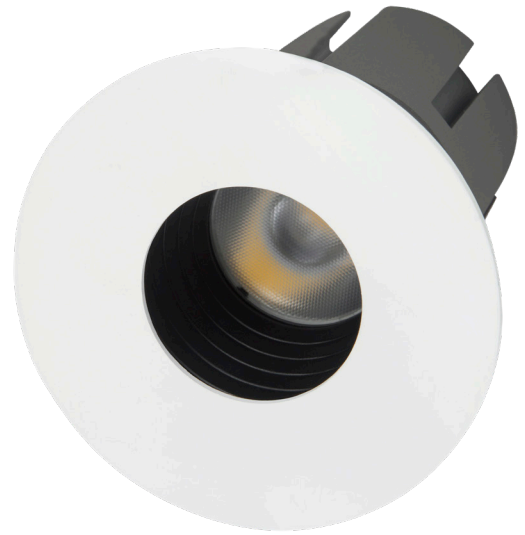


# Optical Downlight



The Optical Downlight range offers flexibility through specification due to the large range of optics, faces and beam angles available. Ideally suited to high-end commercial and residential applications where specific beam angles are required.

## Physical

**Housing** ADC12 aluminium  
**Optics** Glass dust shield, Reflector  
**Trim finish** White  
**Mounting type** Recessed

## Electrical

**Voltage and Current**  
 26-44V, 300-1050mA  
**Control** Non-dimmable, Triac, 1-10V, DALI

## Certification

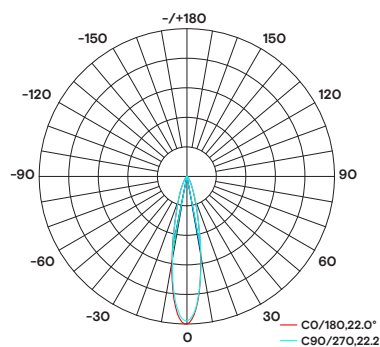
**Warranty** 5 years  
**Category** IP20, IP54  
 AS/NZS 60598.2.1  
 AS/NZS 60598.2.2A  
 TM21 report on request

## Optical

**Beam angle** 15°, 24°, 38°, 55°  
**CCT** 2700, 3000, 4000, 5000K  
**CRI** 80, 90  
**UGR** < 19  
**Efficiency** 75-101lm/W

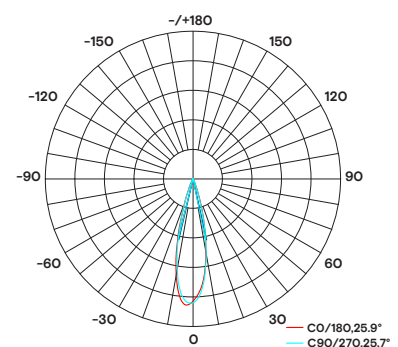


BEAM ANGLE 15°



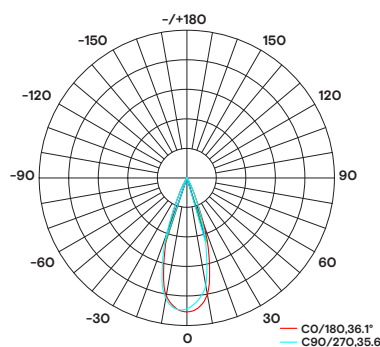
AVERAGE BEAM ANGLE(50%):22.0 DEG

BEAM ANGLE 24°



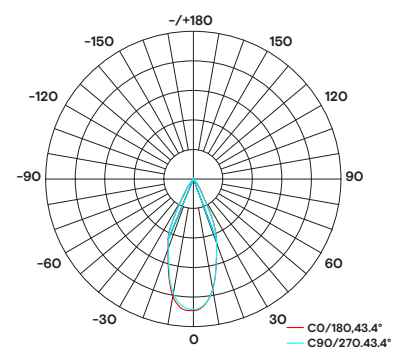
AVERAGE BEAM ANGLE(50%):25.8 DEG

BEAM ANGLE 38°



AVERAGE BEAM ANGLE(50%):35.9 DEG

BEAM ANGLE 55°



AVERAGE BEAM ANGLE(50%):43.4 DEG

SKU	Wattage	Lumen Output	Dimensions DxH mm / LxWxH mm	Cutout D mm / LxW mm	Technical Drawing
G12DP	12W	900lm	88 x 108	75	
G12DSP	12W	900lm	88 x 88 x 108	75 x 75	
G12DRW	12W	1080lm	88 x 108 mm	75	
G12DSW	12W	970lm	88 x 88 x 108	75 x 75	
G12DE	12W	1050lm	105 x 108	90	
G12DRA	12W	1170lm	82 x 83	70	
G12DSA	12W	970lm	82 x 82 x 83	70 x 70	
G12DTA	12W	1050lm	71 x 112	76	
G12DTN	12W	1050lm	71 x 112	76	
G12DIP	12W	1000lm	88 x 108	75	
G33DTA	33W	3030lm	116 x 169	122	
G33DTN	33W	3030lm	116 x 169	122	
G33DN	33W	3100lm	124 x 158	110	
G33DA	33W	3100lm	145 x 161	130	
G42DTA	42W	3822lm	142 x 184	148	
G42DTN	42W	4240lm	142 x 184	148	
G42DA	42W	4030lm	165 x 152	150	

## SKU Builder

Use our SKU Builder below to create custom codes from our range.

	Series	Wattage	Type	Product Descriptor	Trim Finish	CRI	CCT	Beam Angle	Control
SKU CODE	<b>G</b> Grace	<b>12</b> 12W	<b>D</b> Downlight	<b>T</b> Trimless Adjustable	<b>W</b> White	<b>8</b> 80 CRI	<b>27</b> 2700K	<b>15</b> 15°	<b>N</b> Non-Dim
		<b>33</b> 33W		<b>TN</b> Trimless Fixed		<b>9</b> 90 CRI	<b>3</b> 3000K	<b>24</b> 24°	<b>D</b> Triac
		<b>42</b> 42W		<b>IP</b> IP54		↑	<b>4</b> 4000K	<b>38</b> 38°	<b>D10</b> 1-10V
		↑		<b>RW</b> Round Wallwasher			<b>5</b> 5000K	<b>55</b> 55°	<b>DA</b> DALI
				<b>SQ</b> Square Wallwasher			↑	↑	↑
				<b>P</b> Pinhole					
				<b>SP</b> Square Pinhole					
				<b>E</b> Oval / Elliptical					
				<b>RA</b> Round Adjustable					
				<b>SA</b> Square Adjustable					
				<b>TA</b> Trimless Adjustable					
				<b>TN</b> Trimless Fixed					
				<b>A</b> Adjustable					
			<b>N</b> Fixed						
			↑						